





3932 Lantern View Place

AT WEST BROAD VILLAGE



-  3 Bedrooms
-  3.5 Bathrooms
-  2956 Square Feet
-  2 Car Garage

\$999,469



The Belmont Terrace is a 2 story new home floor plan with 3 bedrooms, 3.5 bathrooms, and a 2-car garage. This unique plan allows you to enter on the main floor which features a foyer and study. Continue to an open-flowing kitchen, dining room and living room perfect for entertaining. The primary bedroom suite is also on this level with a luxurious walk-in closet and spacious primary bathroom. There is also a convenient second bedroom and full bath. You'll head down the stairs to the terrace level which features a large rec area, play/media room, third bedroom, full bath, and two unfinished conditioned storage areas.

Features of this Home

- First floor primary bedroom suite with large walk-in closet
- Study
- Luxury countertops, stainless steel appliances, and under cabinet lighting in kitchen
- Gas fireplace in family room
- Covered lanai
- LED recessed lighting package with dimmer switch in family room, primary bedroom, and media room

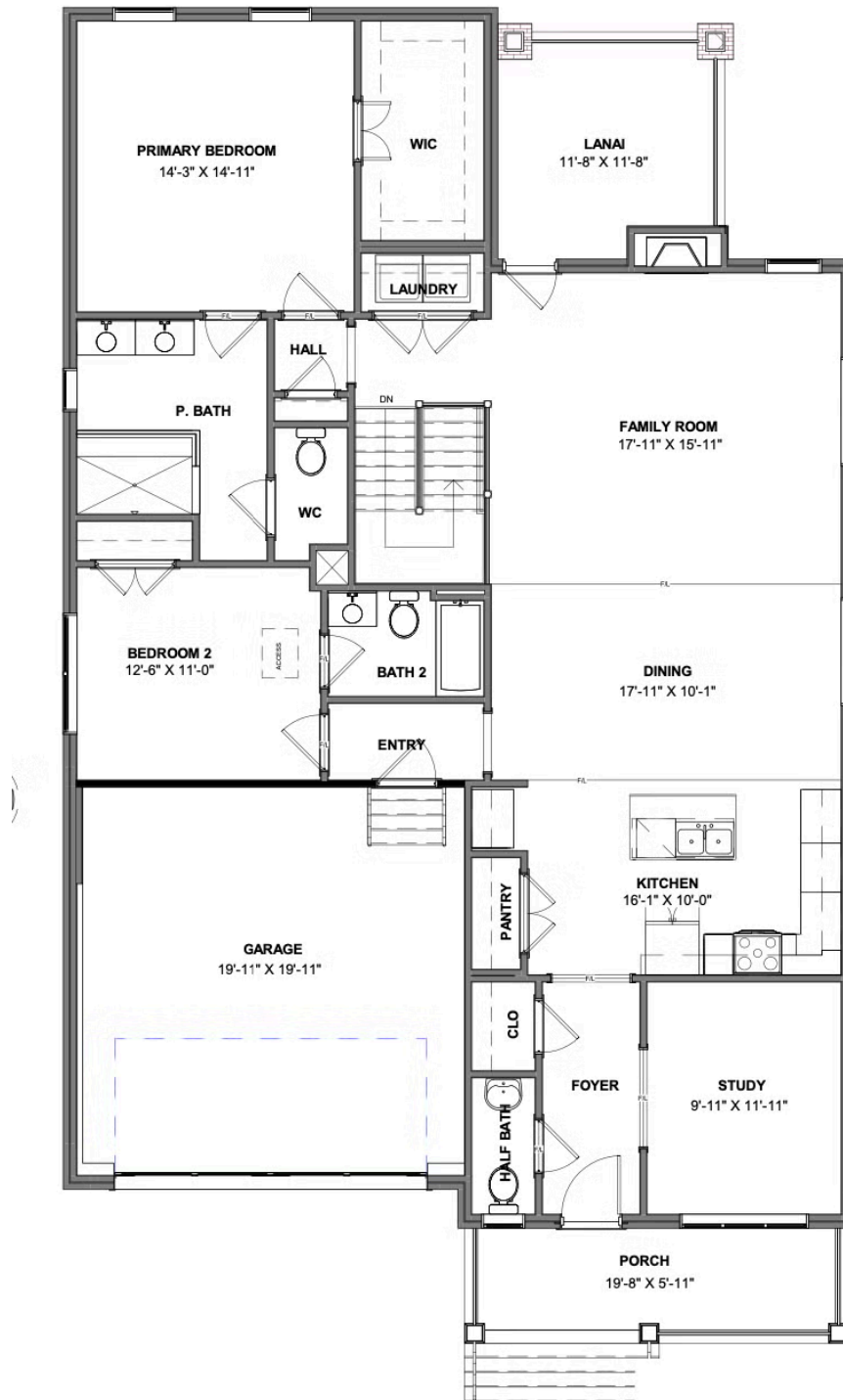
eagleofva.com

3932 Lantern View Place

AT WEST BROAD VILLAGE



MAIN LEVEL



eagleofva.com

TERRACE LEVEL

