





# 3928 Lantern View Place

AT WEST BROAD VILLAGE



-  3 Bedrooms
-  2.5 Bathrooms
-  2710 Square Feet
-  2 Car Garage

**\$982,216**



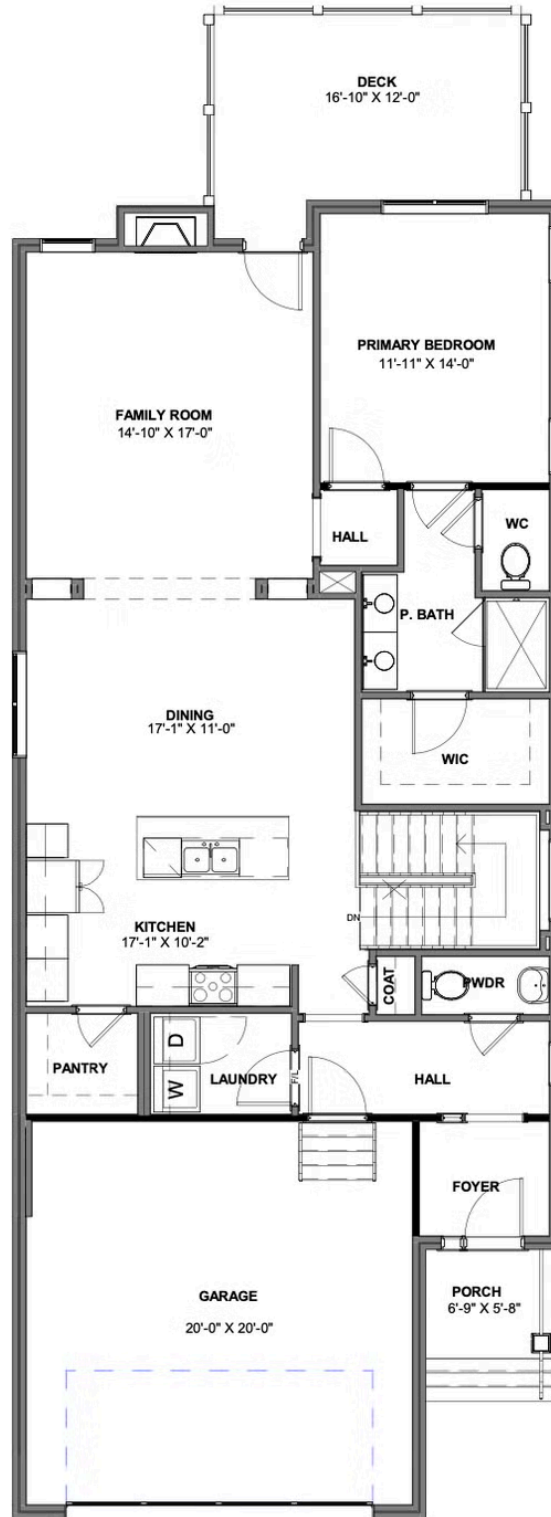
Step inside the Ridge Terrace, this beautifully designed two level home where open spaces, natural light, and thoughtful details come together to create the perfect blend of style and functionality. You're greeted by a bright foyer that opens into an airy, open concept living area - ideals for both relaxing nights in and lively gathering with friends and family. At the heart of the home is the kitchen, complete with a spacious island, and a walk-in pantry that keeps everything neatly tucked away. The kitchen flows seamlessly into the dining area and spacious family room with gas fireplace. Step through to the deck and enjoy morning coffee or evening dinners in the open air. The first floor primary suite features a walk-in closet, dual vanity and large walk-in shower. Everyday convenience is built right in with a laundry room just off the garage entry. The lower level expands your possibilities with two spacious bedrooms, a full bath, a large recreation room, and an unfinished conditioned storage area.

## Features of this Home

- Full Brick Exterior
- Kitchen Features Luxury Quartz Countertops, White Cast Iron Apron Front Sink, Stainless Steel Appliances with Gas Gourmet Cooktop and Custom Wood Range Hood
- Corner Pantry in Kitchen
- Gas Fireplace in Family Room
- LED Recessed Lighting with Dimmer Switch in Family Room and Downstairs Rec Room
- First Floor Primary Bedroom Suite with Frameless Shower Door and Large Walk-In Closet
- Hardwood Stairs to Lower Level
- 16'x12' Rear Deck
- Terrace Level Features 2 Bedrooms, Full bath, Large Rec Area with Cafe Rough-In, and a Large Unfinished

[eagleofva.com](http://eagleofva.com)

## MAIN LEVEL



## TERRACE LEVEL

