





3912 Lantern View Place

AT WEST BROAD VILLAGE



-  3 Bedrooms
-  2.5 Bathrooms
-  3186 Square Feet
-  2 Car Garage

\$969,974



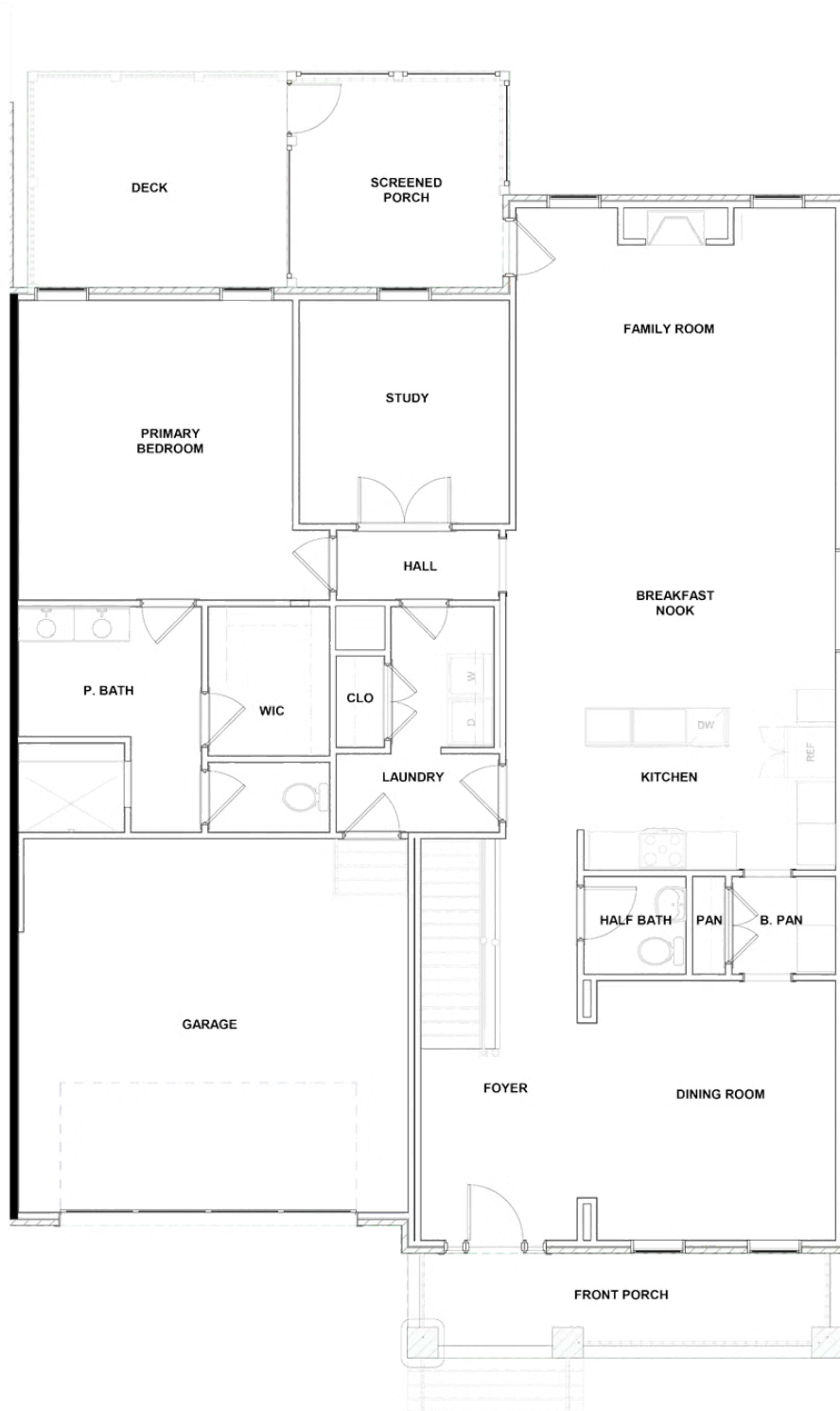
Welcome to the Linden Terrace, a 2-story plan with 3 bedrooms, 2.5 baths, a 2-car garage, and 3,100+ glorious square feet of pure home happiness. A front porch made for sipping lemonade and social graces welcomes you inside to a chef's dream kitchen offering a scenic vista overlooking both breakfast nook and family room. A formal dining room and home study lend sophistication and flexibility, while a secluded first floor primary suite with prodigious walk-in closet and dual-sink bath offer a quiet escape. Step downstairs to the terrace level where a rec room, full bath, and two additional bedrooms blend playfulness, with easygoing comfort and everyday livability—while a cavernous unfinished storage area is ready for whatever you can imagine.

Features of this Home

- Full Brick Exterior
- Gas Fireplace in Family Room
- 1st Floor Primary Bedroom Suite with Serenity Bath including Bench Seat in Shower
- Hardwood Stairs to Lower Level
- Screened Porch off of Family Room
- Study with French Doors
- Terrace Level Features Expanded Rec Area, 2 Bedrooms, Full Bath, and Cafe Rough-In

eagleofva.com

MAIN LEVEL



TERRACE LEVEL

