





3908 Lantern View Place

AT WEST BROAD VILLAGE



-  4 Bedrooms
-  3.5 Bathrooms
-  3015 Square Feet
-  2 Car Garage

\$958,805



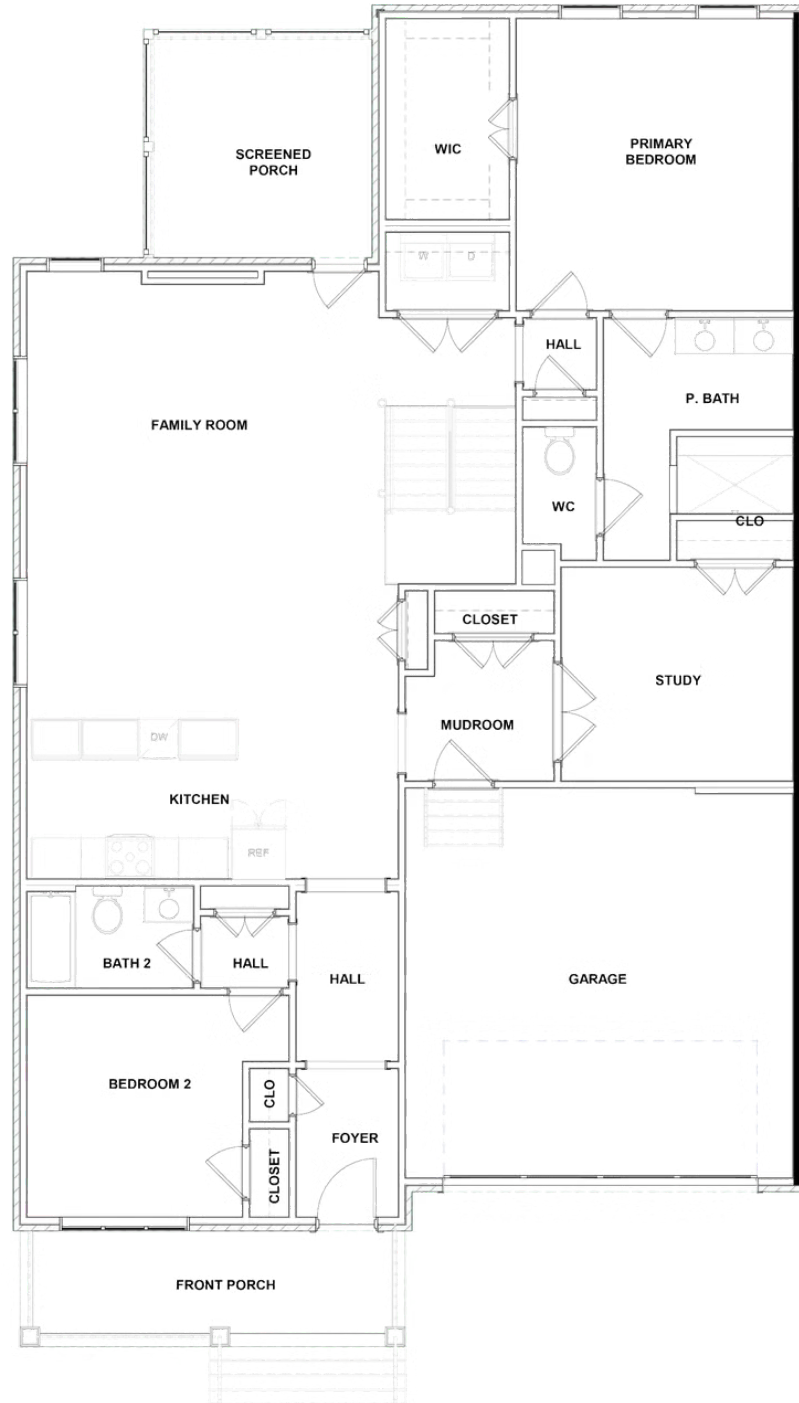
This Belmont Terrace is a 2 story new home floor plan with 4 bedrooms, 3 bathrooms, and a 2-car garage. The main floor features an open-flowing kitchen, dining room and living room perfect for entertaining. The primary bedroom suite is also on this level with a luxurious walk-in closet and spacious primary bathroom. There is also a second bedroom with full bath, and a study to complete this floor. You'll head down the stairs to the terrace level where there is an expanded rec room with wet bar rough-in, 2 bedrooms, a full bath, and two large unfinished conditioned storage spaces.

Features of this Home

- Full Brick Exterior
- 1st Floor Primary Bedroom Suite with Serenity Bath and Large Walk-In Closet
- Study
- Gas Fireplace in Family Room
- LED Recessed Lighting Packages
- Hardwood Stairs to Lower Level
- Terrace Level Includes Expanded Rec Room and Wet Bar Rough-In
- Expanded Laundry Room
- Screened Porch

eagleofva.com

MAIN LEVEL



TERRACE LEVEL

