





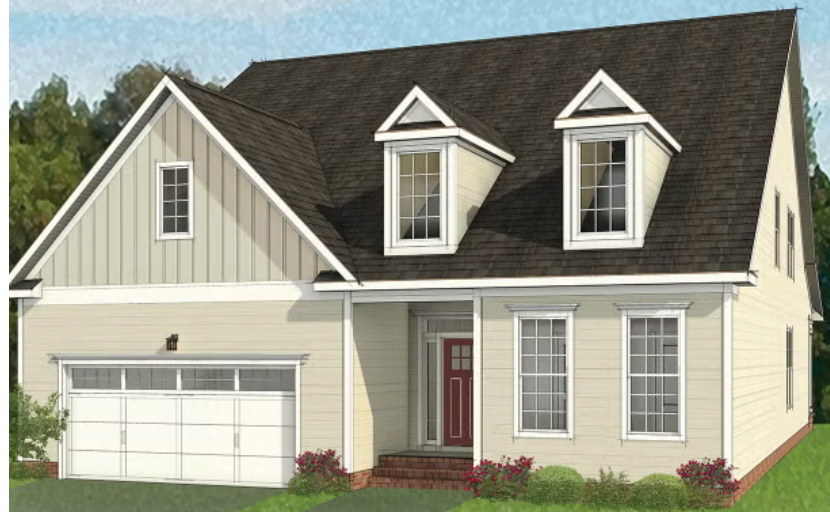
4929 Little Henry Lane

AT SWEETSPIRE



-  3 Bedrooms
-  3.0 Bathrooms
-  2881 Square Feet
-  2 Car Garage

\$909,429



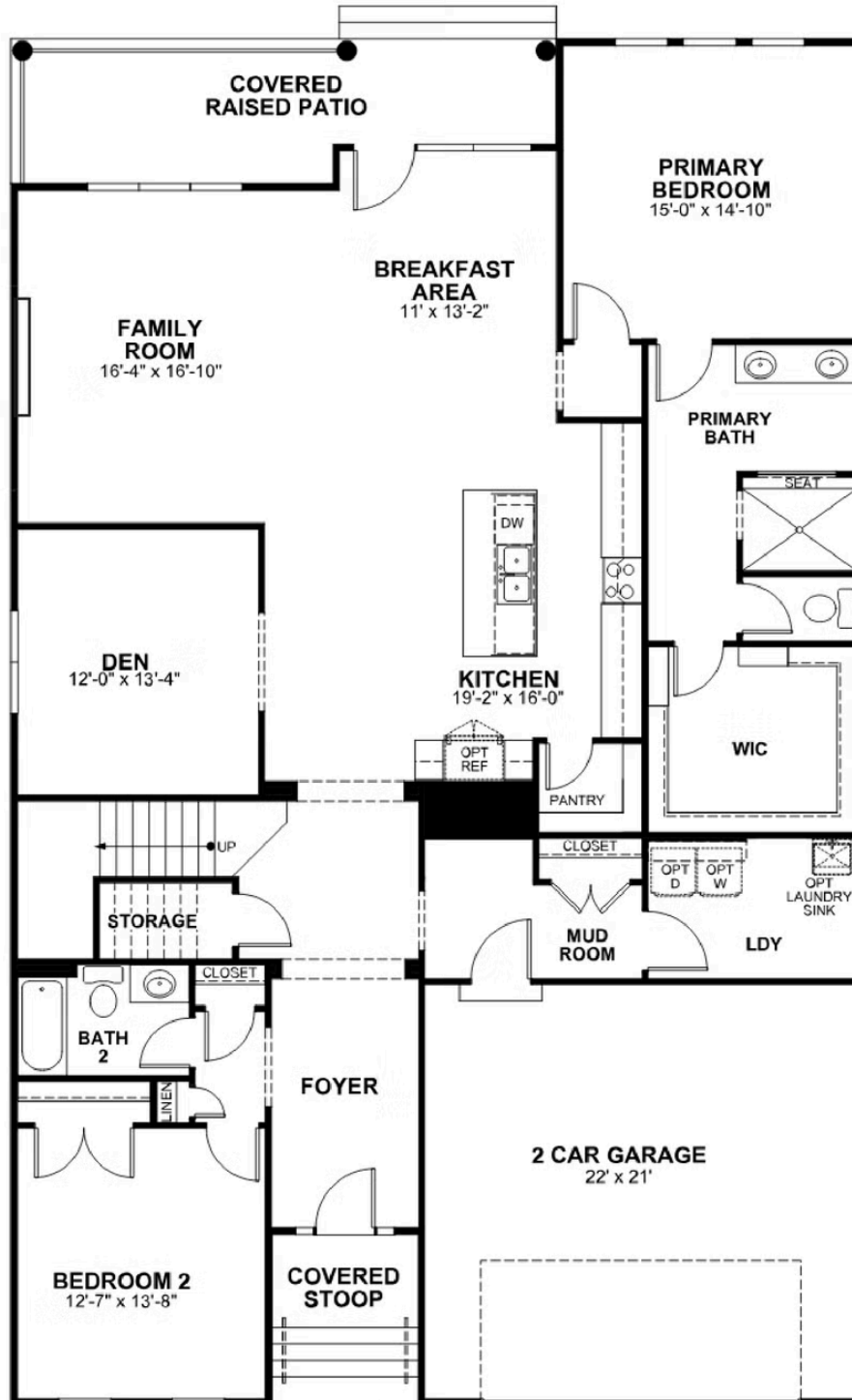
Live in the “wow” with the Fulton, a sweeping 2-story plan with 2-car garage, 3 bedrooms, and all the space you could dream of. Featuring over 2,800 square feet of easygoing style, you'll never miss a beat in the expansive open-flow kitchen, family room, breakfast area, and den. Personalization opportunities abound throughout, from an optional dining room and 'twilight fireplace,' to the first floor primary suite with its sumptuous walk-in closet and dual-sink bath. A front bedroom and full bath sit just off the foyer, while a convenient mud room and laundry are ready for life's messy moments. On the second floor, a third bedroom, full bath, and flexible loft space await, with options for a fourth bedroom or additional storage.

Features of this Home

- 1st Floor Primary Bedroom Suite with Ceramic Serenity Bath
- Additional 2nd Bedroom and Full Bath on 1st Floor
- Hardwood Flooring throughout 1st Floor
- Separate Den/Office
- Fireplace in Family Room
- Quartz Kitchen Countertops and GE Stainless Steel Appliances with Microwave Drawer
- 2nd Floor features Bedroom #3, Full Bath, Loft, and Large Conditioned Storage Area
- Rear Fenced Yard
- Solar Panels

eagleofva.com

FIRST FLOOR



SECOND FLOOR

