






-  3 - 4 Bedrooms
-  3 Bathrooms
-  2,881 Square Feet
-  2 Car Garage
-  2 Levels



Welcome to Parkside Village, an exclusive 55+ community in Eastern Goochland! Live in the “wow” with the Fulton, a sweeping 2-story plan with 2-car garage, 3 bedrooms, and all the space you could dream of. Featuring over 2,800 square feet of easygoing style, you’ll never miss a beat in the expansive open-flow kitchen, family room, breakfast area, and den.

Personalization opportunities abound throughout, from an optional dining room and ‘twilight fireplace,’ to the first floor primary suite with its sumptuous walk-in closet and dual-sink bath. A front bedroom and full bath sit just off the foyer, while a convenient mud room and laundry are ready for life’s messy moments. On the second floor, a third bedroom, full bath, and flexible loft space await, with options for a fourth bedroom or additional storage.

### Features of this Floorplan

- First floor primary bedroom
- Primary bedroom connects to laundry room
- Den
- Multiple primary bath configurations
- Option for formal dining room
- Option for extended patio
- Option for screened porch
- Second floor loft and bedroom with option to add additional bedroom and/or unfinished storage



**Arts & Crafts**

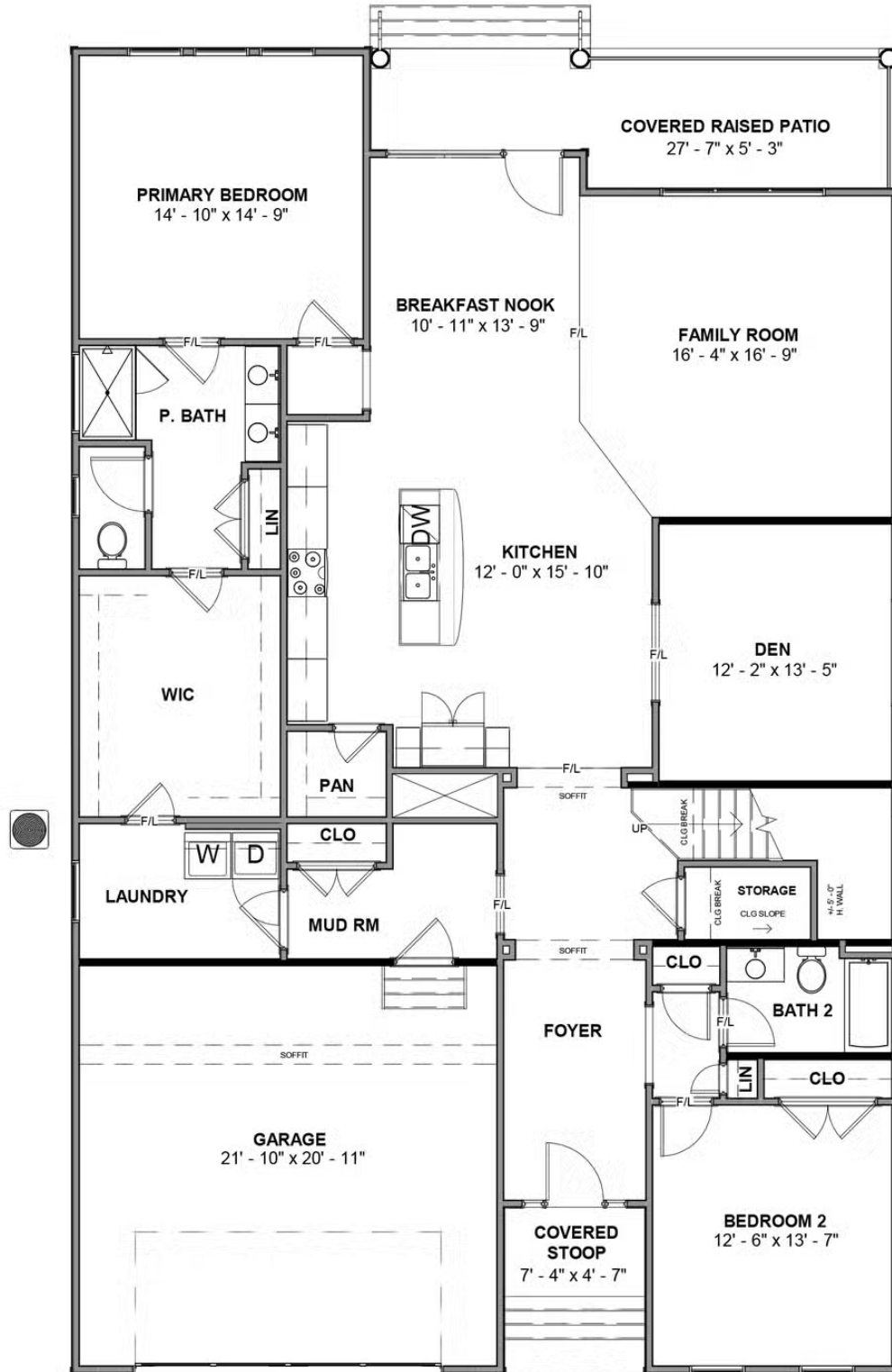


**Colonial**



**Folk Victorian**

FIRST FLOOR



SECOND FLOOR

