






-  4 - 5 Bedrooms
-  2.5 - 3 Bathrooms
-  2,842 Square Feet
-  2 Car Garage
-  2 Levels



Southern hospitality meets modern sensibilities with the Savannah, a 2-story plan offering 4 bedrooms, 2.5+ baths, a 2-car garage and over 2,800 square feet of tranquility ready for personalization. Step into the foyer and ambiance of home as a front study and dining room greet you with open arms. Unleash your inner chef in a dream kitchen with acres of cabinets and large island offering scenic views of the breakfast nook and family room beyond. Let the good life begin—and continue upstairs in a primary suite that caters to your every need with its luxurious dual-sink bath and double walk-in closets. 3 additional bedrooms, a full bath, and convenient second floor laundry ensure plenty of space for one and all. Want more? You got it, with a host of options that includes extended living space, a Florida Room, and third full bath upstairs.



Arts & Crafts



Craftsman



Folk Victorian



Folk Victorian Side Load

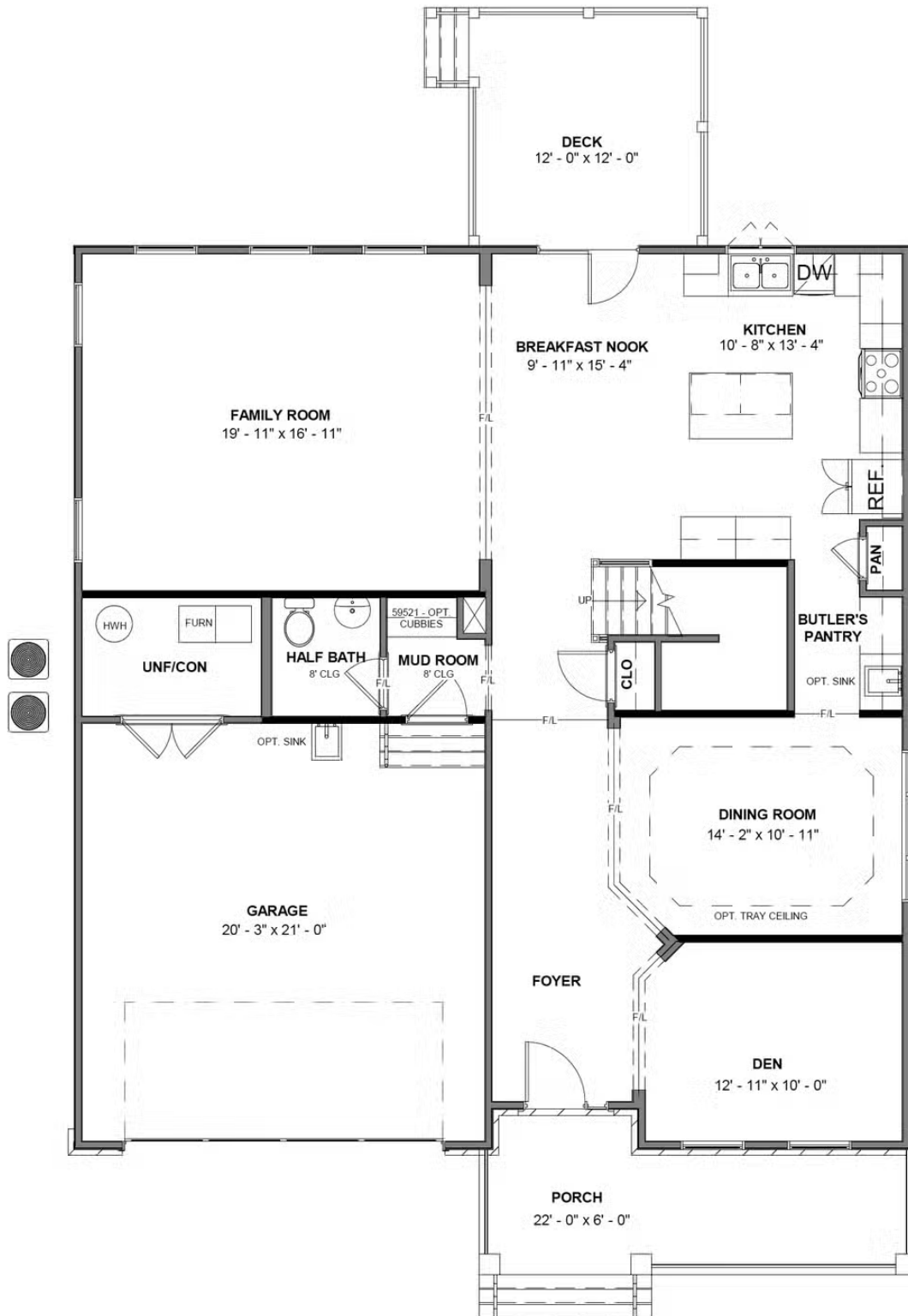


Arts & Crafts Side Load



Craftsman Side Load

FIRST FLOOR



SECOND FLOOR

