






THE Pearl Terrace

AT THE MEADOWS



-  3 Bedrooms
-  2.5 Bathrooms
-  2,170 Square Feet
-  2 Car Garage
-  2 Levels



Brand new floor plan! The Pearl Terrace offers the perfect blend of comfort and functionality, catering to modern living with both style and ease. The main level features a spacious family room, a gourmet kitchen with breakfast nook that opens to a deck, and a formal dining room.

The secluded first floor primary suite includes a walk-in closet and private bath, while a convenient laundry room and half bath finish out the main level. The terrace (basement) level adds two cozy bedrooms, a full bath, and generous unfinished storage areas. A rec room can be added for more room to spread out while entertaining or relaxing. And an attached 2-car garage gives you even more space.

eagleofva.com

THE Pearl Terrace

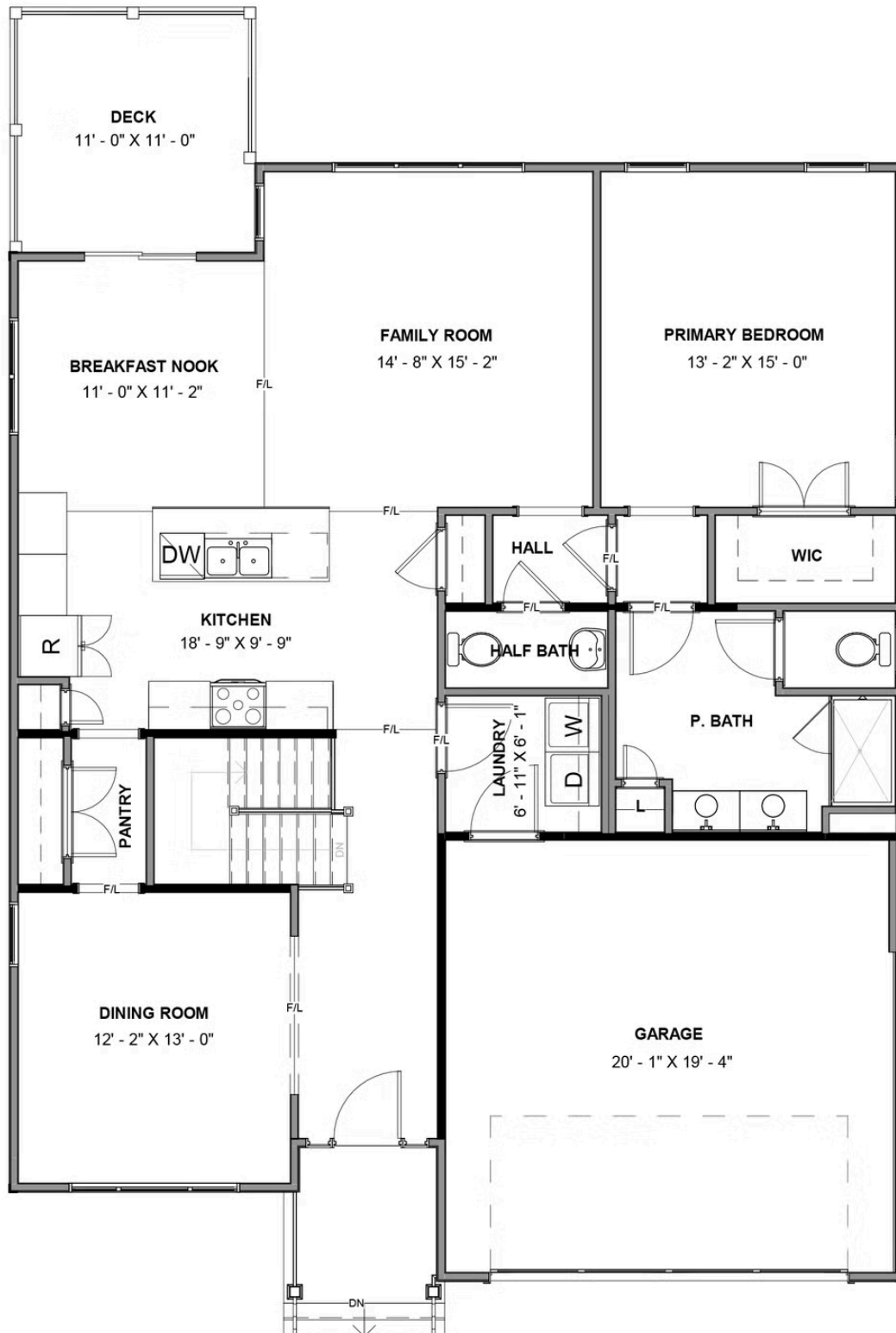
AT THE MEADOWS



eagleofva.com

This information is deemed reliable but not guaranteed. All details, dimensions, square footage, illustrations and pricing are approximate and may vary from actual plans and specifications. Contact an Eagle Sales Consultant for details. Current information as of 25th April 2025

MAIN LEVEL



TERRACE LEVEL

