





1065 Round Meadow Drive

AT THE MEADOWS



-  4 Bedrooms
-  2.5 Bathrooms
-  2743 Square Feet
-  2 Car Garage

\$584,900



Smart, stately, and dressed to impress, the Bradford is a new 2-story plan with 4 bedrooms, 2.5 baths, a back deck, and over 2,700 square feet of gracious modern living. Step from front porch to foyer and into a feeling of home as fresh as the mountain air. A front study and formal dining room greet guests like proper hosts, inviting all to a vast panoramic roomscape where the smells of home cooking blend with the love of family and laughter of gatherings that go well past bedtime. As the night ends, head upstairs to your majestic primary suite with its Serenity primary bath and spacious dual walk-in closets. Three additional bedrooms with walk-in closets, a full dual-sink bath, and second floor laundry ensure you never be lacking for space to stretch and room to grow.

Features of this Home

- Serenity primary bath with bench seat in shower
- Fireplace in family room
- Expanded deck
- Hardwood stairs
- Laundry sink rough-in
- High definition video package
- LED recessed light package with dimmer

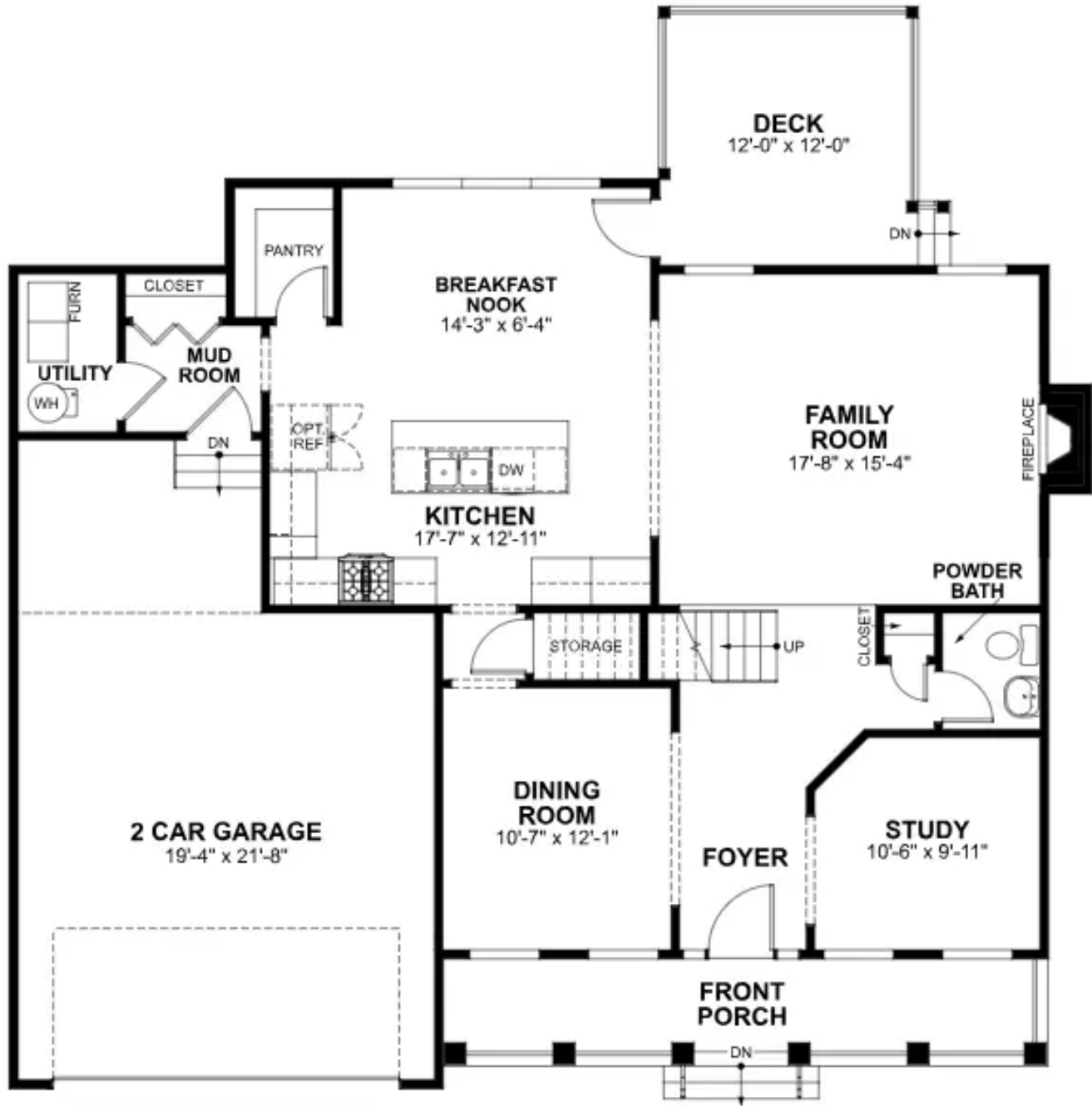
eagleofva.com

1065 Round Meadow Drive

AT THE MEADOWS



FIRST FLOOR



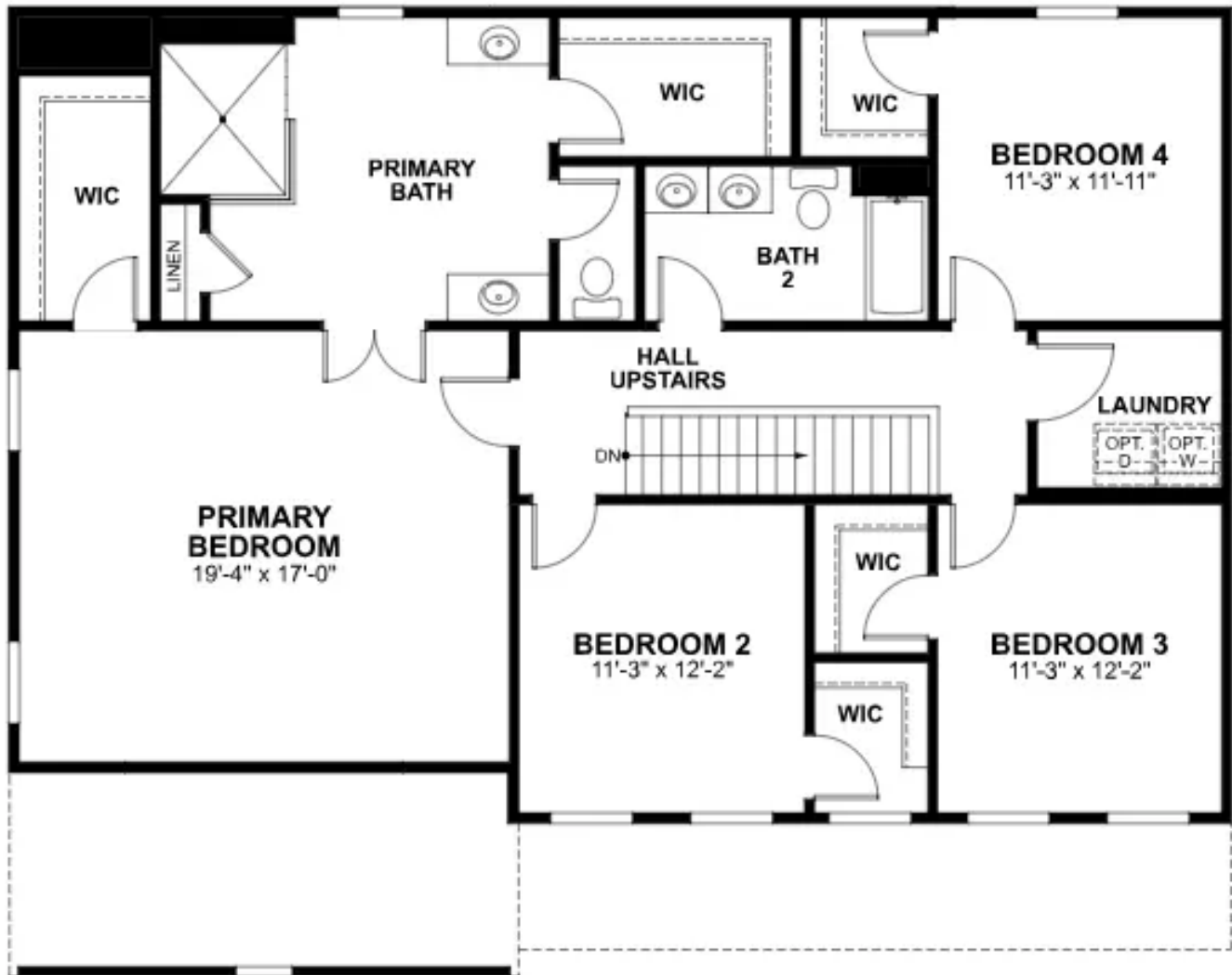
eagleofva.com

1065 Round Meadow Drive

AT THE MEADOWS



SECOND FLOOR



eagleofva.com