

The Meadows



 2,106 - 3,044 Square Feet

 3 - 5 Bedrooms

 2.0 - 3.0

Priced From \$524,990



Community Location: 1107 Round Meadow Dr, Christiansburg, VA 24073

Features of this Community

- Single family new construction homes with first or second floor primary bedrooms, and available estate-sized lots
- Open-space, energy-efficient plans with endless options for personalization
- Stunning panoramic views and sunsets galore
- Located off Round Meadow Drive, offering easy access to area schools, shopping, restaurants, entertainment, and more
- Top 25 Best Small City in the US!

Come home to the natural splendor of The Meadows, a painterly landscape of sweeping views and stunning sunsets nestled in the pristine hills of Christiansburg. Close to everything you could possibly want yet secluded enough to escape it all, you'll feel more connected than ever to the things that matter most, beginning with you. Offering available estate-sized lots and featuring single family new construction homes ready for personalization, The Meadows is a vibrant neighborhood and cozy storybook retreat ready for writing life's next great chapter.

eagleofva.com

Quick Move-Ins



early 2026

1107 Round Meadow Drive

Christiansburg, VA 24073
The Meadows
Homesite 7
\$803,504

The Linden III

 2,677  3  2.5



early 2026

1062 Round Meadow Drive

Christiansburg, VA 24073
The Meadows
Homesite 44
\$784,657

The Hartford Terrace

 3,044  3  2.5



early 2026

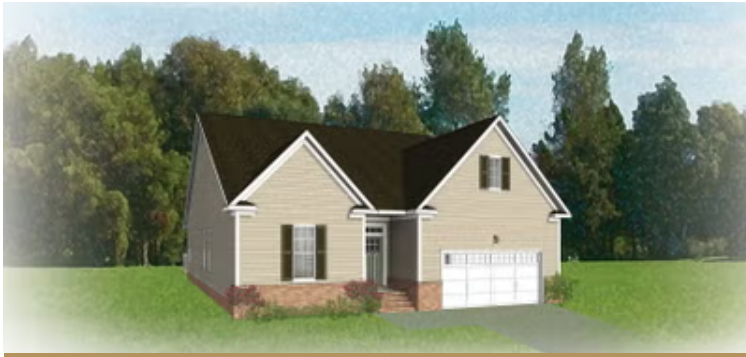
985 Round Meadow Drive

Christiansburg, VA 24073
The Meadows
Homesite 24
\$679,463

The Linden III

 2,677  3  2.5

Floor Plans



Corvallis

Starting at \$524,990

 2,106  3 - 5  2 - 3



Westminster




Starting at \$555,990

 2,641  3 - 5  2.5 - 3



Savannah

Starting at \$576,990

 2,842  4 - 5  2.5 - 3



Linden III

Starting at \$585,990

 2,677  3  2.5



Linden Terrace

Starting at \$643,990

 2,918  3  2.5

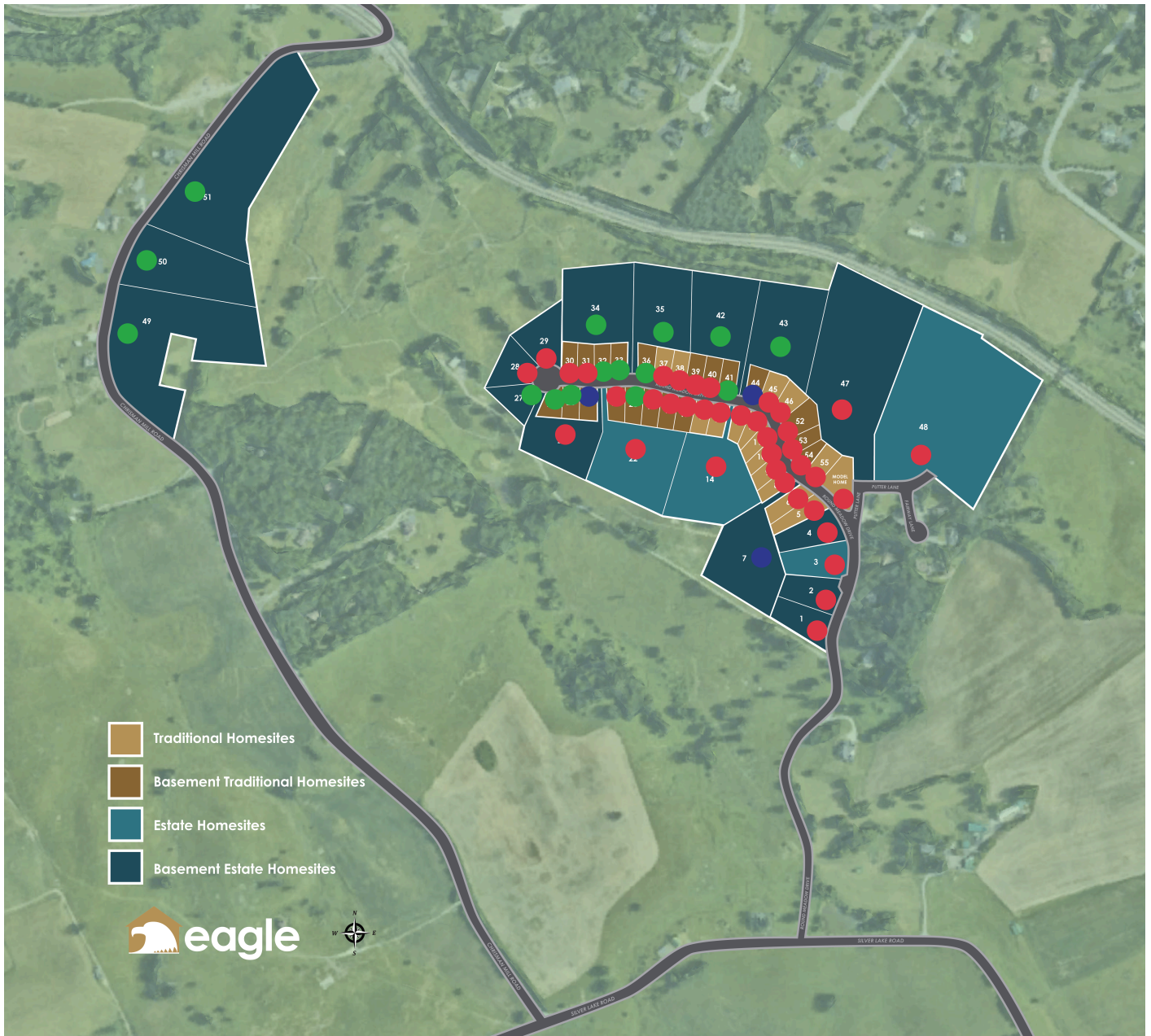


Hartford Terrace

Starting at \$674,990

 3,044  3 - 4  2.5

Interactive Siteplan



● Quick Move-ins ● Available Homesites ● Sold

eagleofva.com

This information is deemed reliable but not guaranteed. All details, dimensions, square footage, illustrations and pricing are approximate and may vary from actual plans and specifications. Contact an Eagle Sales Consultant for details. Current information as of 2nd January 2026

Included Features

AT THE MEADOWS



Architectural Features:

- Accented Brick with remaining areas to be fiber cement 6" prefinished siding with aluminum wrapped rake and fascia and fully vented soffit at eaves. Shake siding to be fiber cement 7" random square staggered edge shake
- Trim to be white
- Masonry foundation with brick veneer. Builders standard brick, side and rear foundation walls may be stepped down, per site conditions. Insulated conditioned crawl space. Basements (if applicable) will be poured concrete with waterproofing to grade and installed drainage system

Exterior Features:

- Limited Lifetime Dimensional shingles
- Front stoop/porch to be brick with broom finished concrete and brick steps. Architectural columns installed, per plan. If rails are included, they will be black powder coated aluminum
- Front door to be 6'8" insulated fiberglass door with transom and sidelight, per plan
- Two hose bibs
- OG shaped, aluminum gutters with aluminum downspouts and vinyl splash blocks
- Included deck constructed of pressure treated wood material, sized per plan

Streetscape Features:

- Unique exterior detailing
- Asphalt driveway and broom finished concrete walkway
- Sod to be installed approximately 20' in front and rear of home and 10' on sides. Other disturbed areas will be seeded and strawed. Building landscaping package with mulch installed
- Professionally pre-selected exterior color palette

Mechanical Features:

- 14 SEER rated HVAC system with a Programmable Thermostat on each floor
- Energy Efficient 50 gallon electric hot water heater

Energy Efficient Home Features:

- White vinyl single-hung tilt low E windows with grids between insulated glass. Screens are included on all operational windows
- R38 blown and/or batt ceiling insulation
- Conditioned Sidewall - high density R15 fiberglass batt
- Air filtration package - building wrap, window flanges taped to house wrap, and interior of sole plate sealed to subfloor
- Duct blaster test to be conducted on all duct work

Interior Features:

- 6'-8" hollow core, 2 panel, smooth, square top doors with satin nickel door knobs
- Designer Ventilated closet shelving (per layout)
- Pre-Finished Laminate wood flooring in Foyer, Kitchen, Breakfast Nook, Butler's Pantry, Dining Room, Living Room (Plan Specific) and Powder Room
- Ceramic Tile in Primary Bath
- Vinyl in Full Baths and Laundry Room
- Carpet in all remaining areas
- Fully carpeted pine box set stairs with oak handrail, newel post and rosette, with tapered painted balusters and painted cap board. Secondary floors will have drywalled half wall with painted wall cap or full wall, per plan
- 5-1/4" ogee base with 3-1/4" Colonial Casing on windows, doors and cased openings
- 1-piece 3-5/8" crown in Dining Room with two member chair rail and picture frame molding below
- Structured Wiring Package

Kitchen Features:

- GE Stainless Steel Appliance Package / electric smooth top range, microwave/hood & Energy Star dishwasher
- Granite countertops (Level 1)
- 42" tall Aristokraft Sinclair flat panel birch cabinets
- Stainless steel double bowl undermount kitchen sink with stainless steel single lever faucet
- 1/2 HP garbage disposal

Bathroom Features:

- Primary Bath: 5' shower including fiberglass base, ceramic tile surround and glass shower enclosure. Double or single vanity(s) with double lever chrome faucets
- Full Baths: 5' 1-piece gelcoat fiberglass tub/shower combo (per plan). Double or single vanity(s) with double lever chrome faucets
- Half Bath: Pedestal sink with double lever chrome faucet
- White cultured marble vanity tops
- Elongated commodes

The Eagle Difference - Performance is the Eagle Standard:

- Eagle Advantage Home Warranty (10-year limited warranty)
- Pre-closing walk through
- 60 day and one year post-closing review

eagleofva.com

This information is deemed reliable but not guaranteed. All details, dimensions, square footage, illustrations and pricing are approximate and may vary from actual plans and specifications. Contact an Eagle Sales Consultant for details.



The Meadows HOA Dues

\$40 Monthly Fee

Montgomery County Tax Rate

\$0.84 per \$100 of assessed value

Schools

Christiansburg Elementary School

160 Wades Lane

Christiansburg Middle School

1205 Buffalo Drive

Christiansburg High School

100 Independence Blvd NW

Christiansburg Primary School

240 Betty Drive

Area Amenities

Restaurants

The Farmhouse, First Watch, Red Robin, Texas Roadhouse, Grand Rodeo, Sandro's Italian and Pizzeria, Bull & Bones, Sakura Japanese Steakhouse

Grocery Stores

Kroger, Food Lion, Aldi, Earth Fare

Malls and Shopping

University Mall Shopping Center, Uptown Christiansburg

Recreation

Christiansburg Rec Center, Christiansburg Aquatic Center, Pete Dye Golf Course, Mountain Lake Lodge Adventure Center

Entertainment

Starlite Drive-In Theatre, Regal NRV, It's Game Time at the Super Bowl, and Wonder Universe

Pharmacies

CVS Pharmacy, Mainstreet Pharmacy, Kroger Pharmacy

Hospitals

LewisGale Hospital, LewisGale Christiansburg 24 Hour ER, NRV Pediatrics

Local Contacts

Utilities

Electricity
Appalachian Power
800.956.4327
appalachianpower.com

Natural Gas + Propane
AmeriGas
866.771.2008
amerigas.com

Water + Sewer
Town of Christiansburg
540.382.6128
christiansburg.org

Trash+Recycling
Town of Christiansburg
540.382.6128
christiansburg.org

Post Office
USPS
800.275.8777