





5130 Vulcan Court

AT WOMACK GREEN



-  2 Bedrooms
-  2.0 Bathrooms
-  1562 Square Feet
-  2 Car Garage

\$429,900



Welcome to the Azalea Ranch, the one-level home you've been searching for. With a 2-car garage and open flow floor plan, you'll find all the space you need. Enjoy a kitchen with corner walk-in pantry and large kitchen island overlooking the breakfast nook and family room beyond, you're set up for a holiday gathering or cozy night in. A patio just off the family room gives you the perfect retreat for sipping your morning coffee or afternoon sweet tea. You'll find your primary suite tucked away in the rear of the home with a huge walk-in closet and spacious primary bath with multiple layouts to choose from. A separate water closet and linen closet finish out the space. At the front of the home you will find an additional bedroom and full bath. A walk-in laundry room is located near the primary bedroom.

Features of this Home

- One level living
- Open floorplan
- Large primary walk-in closet
- Corner pantry in kitchen
- Stainless steel appliances
- Fireplace
- Gas cooking
- Granite countertops
- Large rear patio

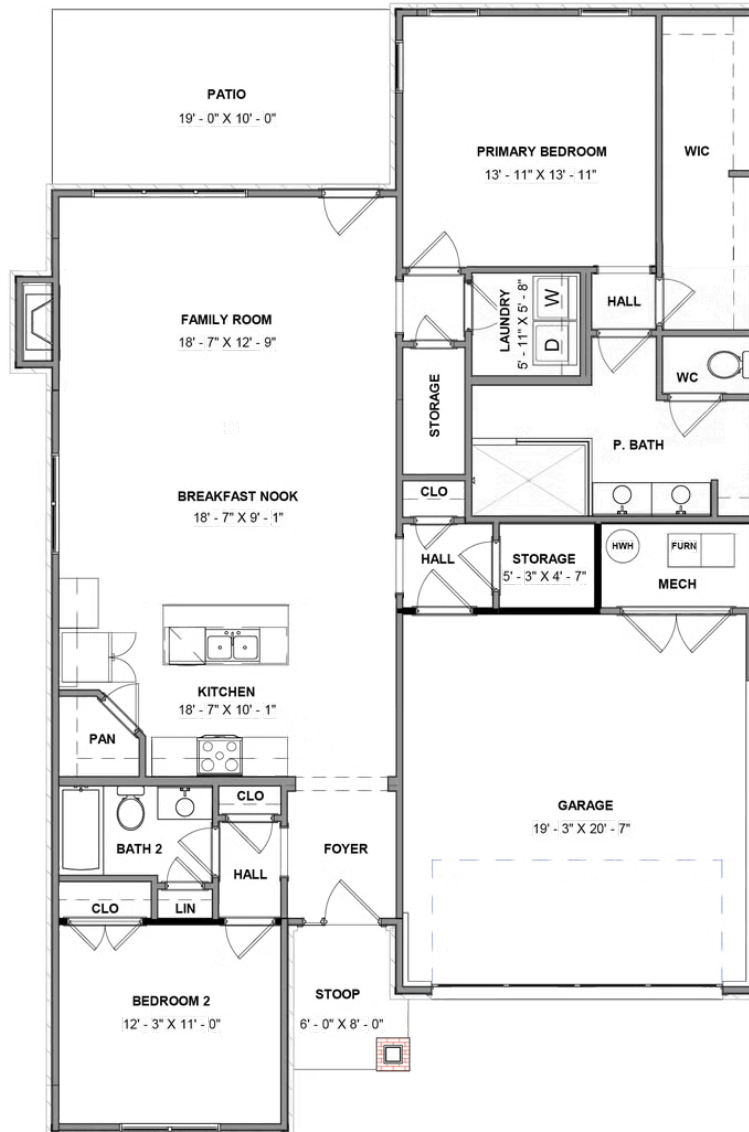
eagleofva.com

5130 Vulcan Court

AT WOMACK GREEN



FIRST FLOOR



eagleofva.com