





5019 Stavely Road

AT WOMACK GREEN



-  4 Bedrooms
-  2.5 Bathrooms
-  2664 Square Feet
-  2 Car Garage

\$496,354



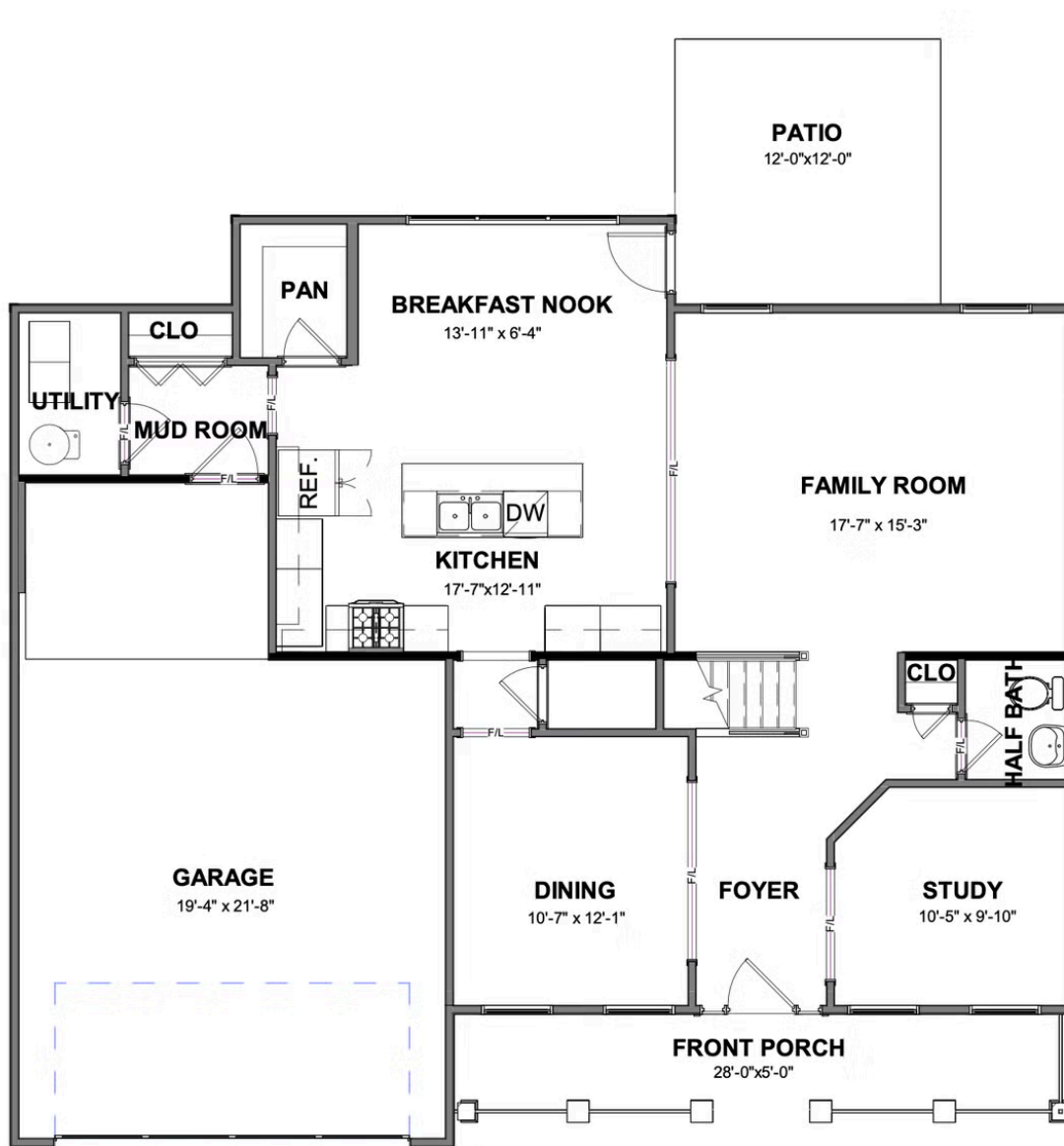
Smart, stately, and dressed to impress, the Bradford is a new 2-story plan with 4 bedrooms, 2.5 baths, a back deck, and over 2,600 square feet of gracious modern living. Step from front porch to foyer and into a feeling of home as fresh as the mountain air. A front study and formal dining room greet guests like proper hosts, inviting all to a vast panoramic roomscape where the smells of home cooking blend with the love of family and laughter of gatherings that go well past bedtime. As the night ends, head upstairs to your majestic primary suite with its epic dual-sink bath and linen closet, and a walk-in as big as the great outdoors. Three additional bedrooms with walk-in closets, a full dual-sink bath, and second floor laundry ensure you never be lacking for space to stretch and room to grow.

Features of this Home

- Formal dining room
- Study
- 4 bedrooms
- Luxury granite countertops
- Outdoor patio perfect for entertaining!

eagleofva.com

FIRST FLOOR



SECOND FLOOR

