




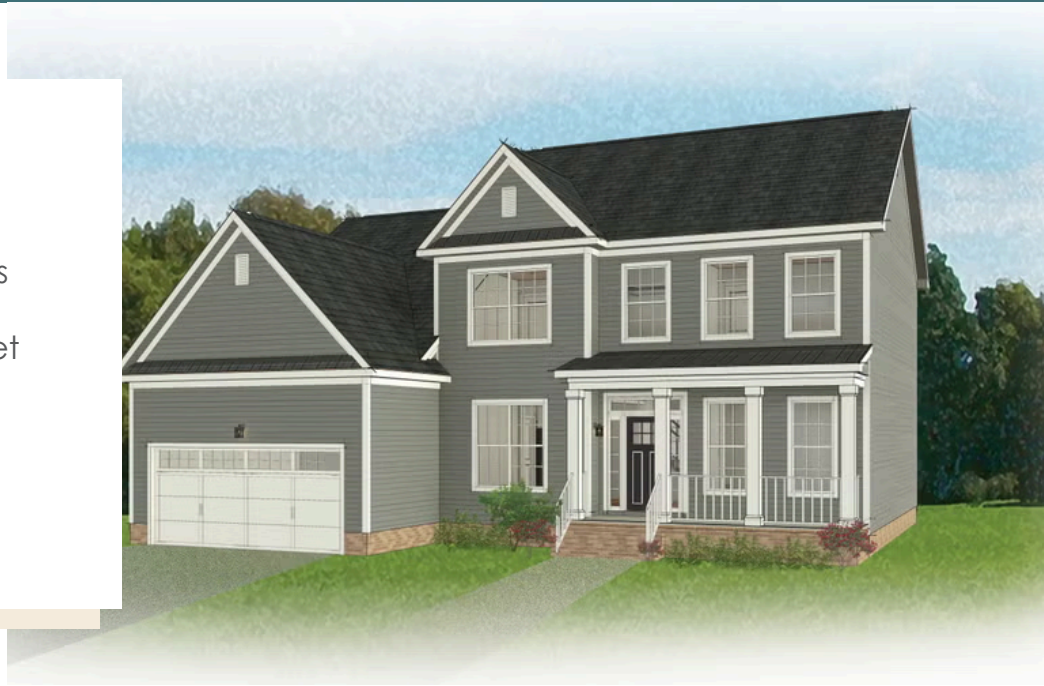


# THE Westminster

AT THE PRESERVE SINGLE FAMILY HOMES



-  3 - 5 Bedrooms
-  2.5 - 3 Bathrooms
-  2,641 Square Feet
-  2 Car Garage
-  2 Levels



The Westminster is a 2 story single family new home floor plan with 3+ bedrooms, 2.5+ baths, and over 2,600 square feet of living space to personalize for your lifestyle. Walk in the front door and you'll find a foyer flanked by a formal Dining Room and Study. Enter your spacious Family Room and discover that it flows right into the Kitchen with a large island, perfect for cooking and entertaining. Tucked away you'll find your first floor primary bedroom suite which features a huge walk-in closet and a spacious primary bathroom with multiple layouts. To finish out the first floor, you can add a screen porch, a deck, or a wrapped porch outside if you desire. The second floor of the home features a spacious loft and 2 additional bedrooms with walk-in closets. Add more bedrooms and make it a 5 bedroom home if you need more space!

[eagleofva.com](http://eagleofva.com)

# THE Westminster

AT THE PRESERVE SINGLE FAMILY HOMES



**Arts & Crafts**



**Craftsman**



**European**

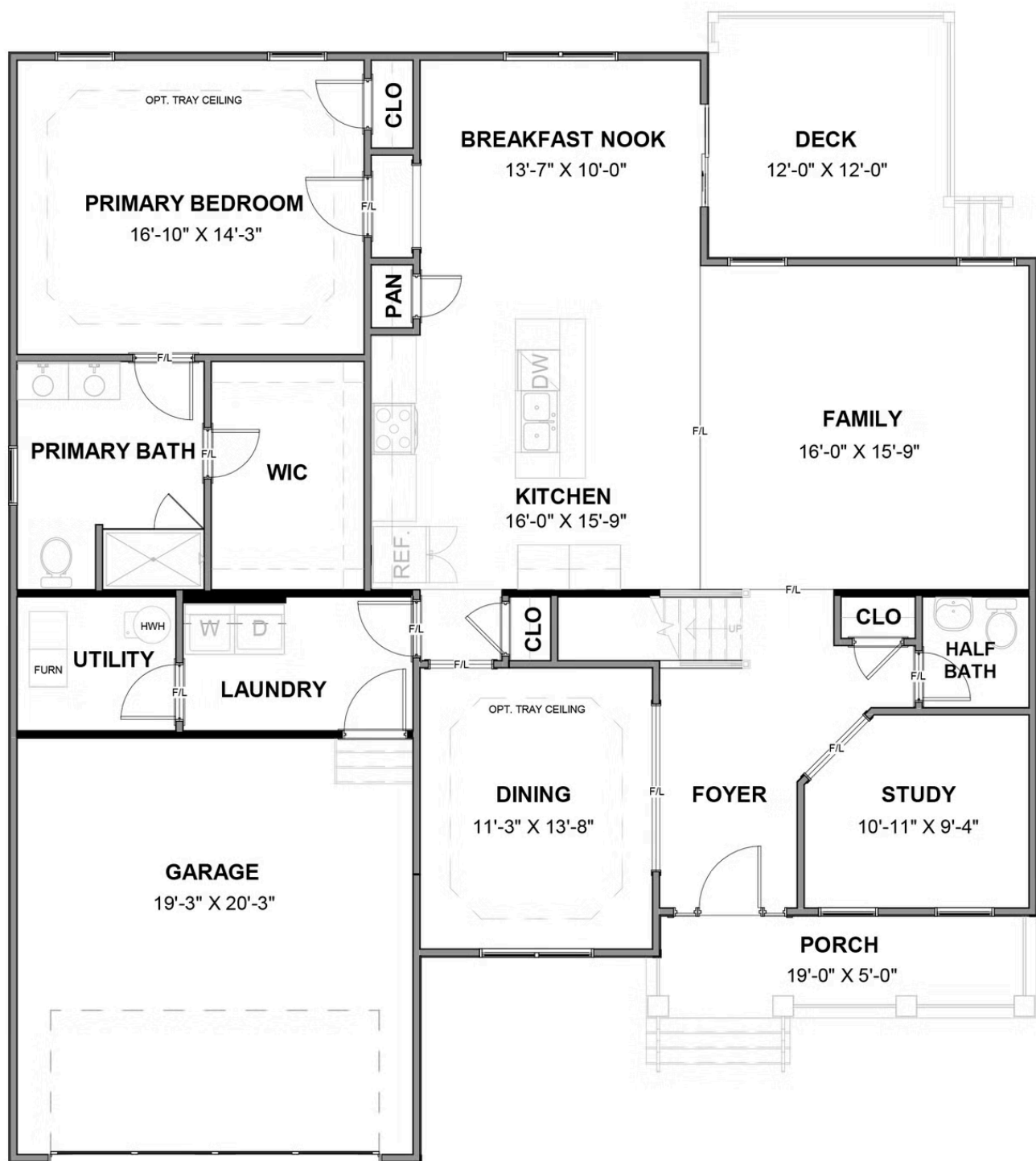


**Folk Victorian**

[eagleofva.com](http://eagleofva.com)

This information is deemed reliable but not guaranteed. All details, dimensions, square footage, illustrations and pricing are approximate and may vary from actual plans and specifications. Contact an Eagle Sales Consultant for details. Current information as of 12th May 2025

FIRST FLOOR



SECOND FLOOR

