






THE Bradford

AT THE PRESERVE SINGLE FAMILY HOMES



-  4 Bedrooms
-  2.5 Bathrooms
-  2,706 Square Feet
-  2 Car Garage
-  2 Levels



Smart, stately, and dressed to impress, the Bradford is a new 2-story plan with 4 bedrooms, 2.5+ baths, a back deck, and over 2,700 square feet of gracious modern living. Step from front porch to foyer and into a feeling of home as fresh as the mountain air. A front study and formal dining room greet guests like proper hosts, inviting all to a vast panoramic roomscape where the smells of home cooking blend with the love of family and laughter of gatherings that go well past bedtime. As the night ends, head upstairs to your majestic primary suite with its epic dual-sink bath and linen closet, and a walk-in as big as the great outdoors. 3 additional bedrooms with walk-in closets, a full dual-sink bath, and second floor laundry ensure you never be lacking for space to stretch and room to grow.

eagleofva.com

THE **Bradford**

AT THE PRESERVE SINGLE FAMILY HOMES



Arts & Crafts



Craftsman

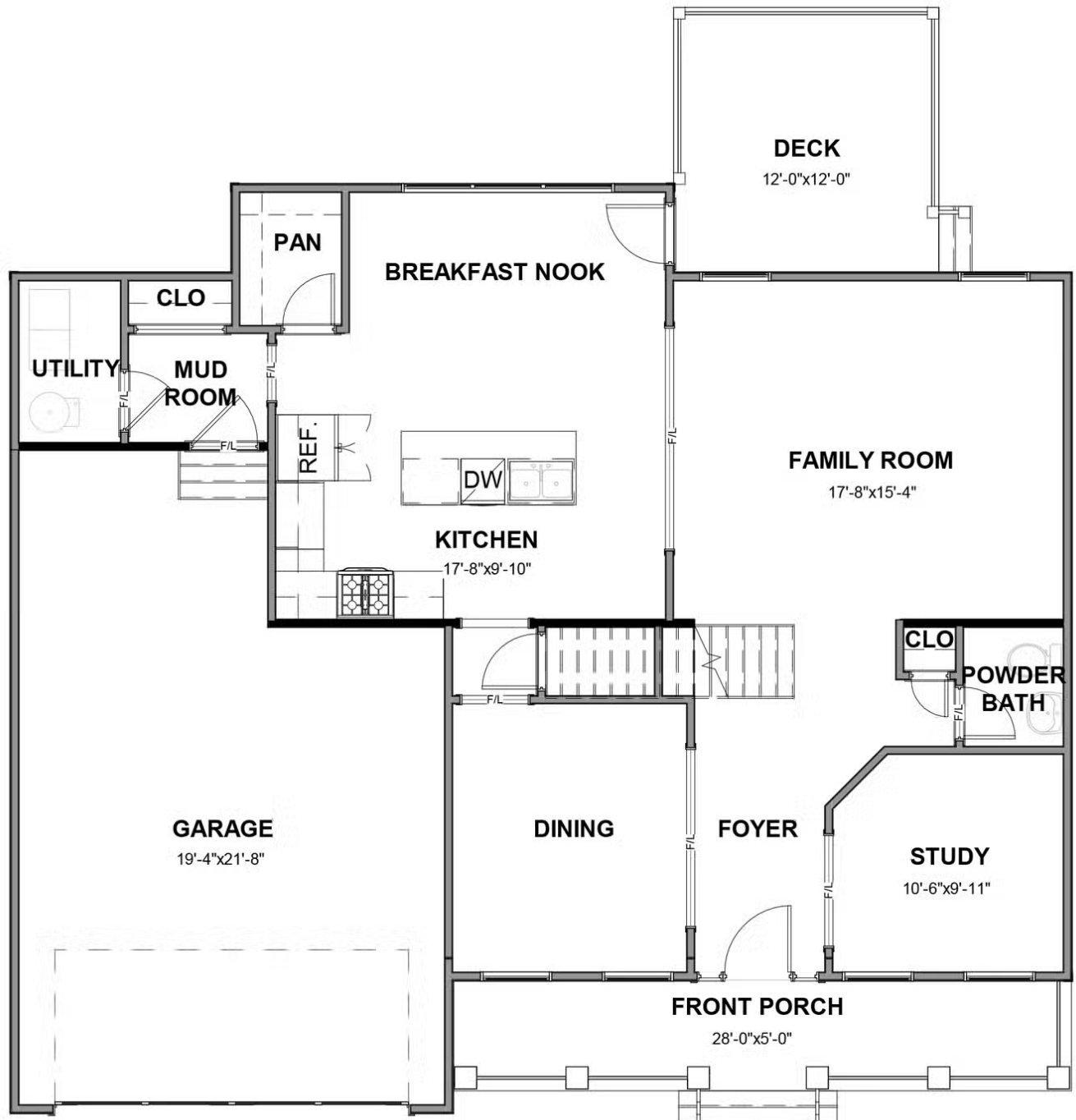


Folk Victorian

eagleofva.com

This information is deemed reliable but not guaranteed. All details, dimensions, square footage, illustrations and pricing are approximate and may vary from actual plans and specifications. Contact an Eagle Sales Consultant for details. Current information as of 23rd April 2024

FIRST FLOOR



SECOND FLOOR

