






THE Pearl Ranch

AT THE PRESERVE VILLAS



-  2 Bedrooms
-  2.5 Bathrooms
-  1,459 Square Feet
-  2 Car Garage
-  1 Levels



Brand new floor plan! Introducing the Pearl Ranch: a one level plan that is anything but ordinary. Enter the home from your 2-car garage and step into your mudroom/laundry room. Just steps away is your spacious kitchen with large island, walk-in corner pantry, and plenty of cabinet space. The island overlooks both the breakfast nook and the family room, ideal for staying connected. Off the breakfast nook you'll find a patio where you can enjoy your morning coffee or wind down in the evening. The primary bedroom is tucked away at the rear of the home, boasting a walk-in closet and large primary bath with separate water closet and dual sink vanity. At the front of the home you will find an additional bedroom with full bath and walk-in closet.

eagleofva.com

THE Pearl Ranch

AT THE PRESERVE VILLAS

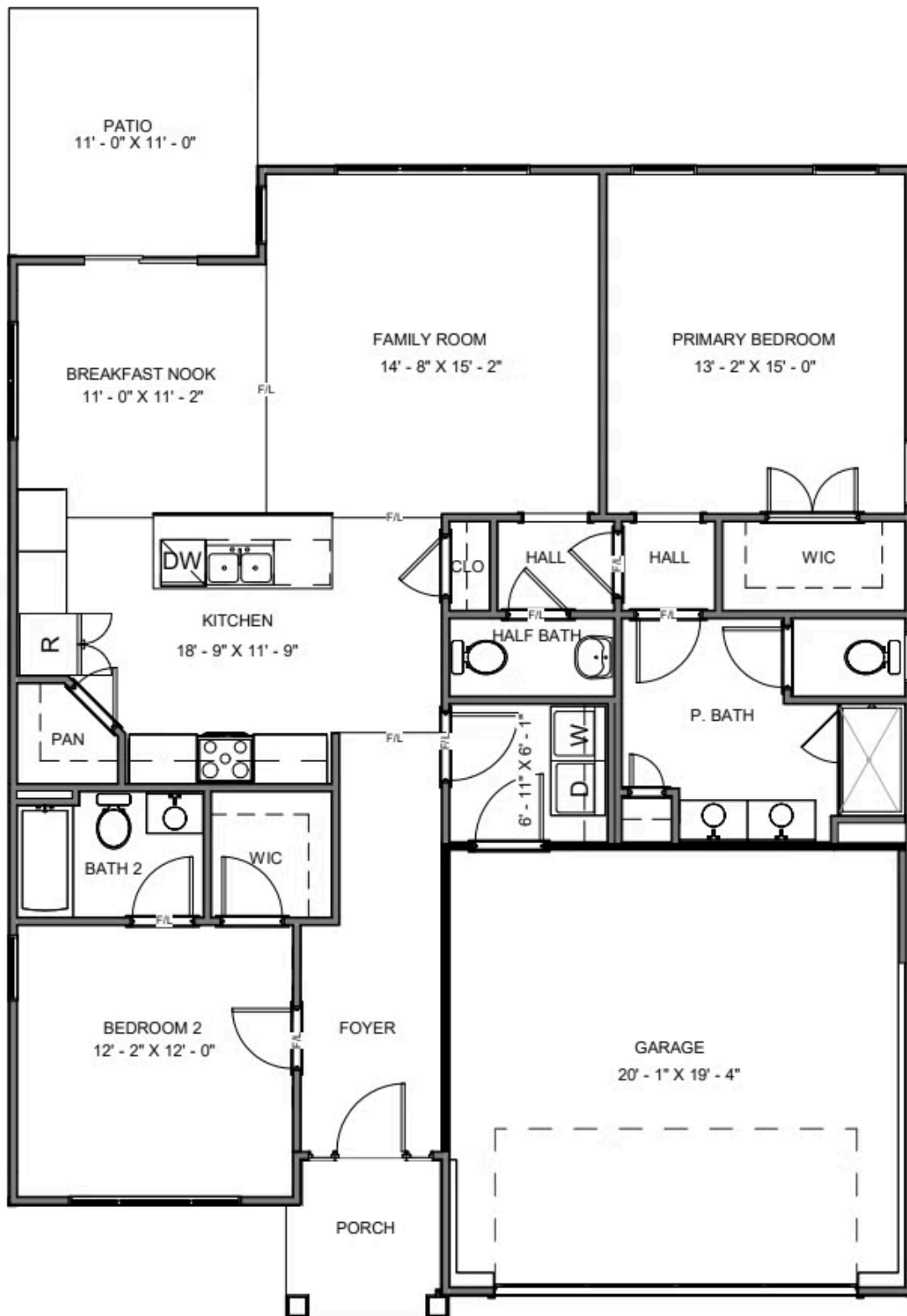


eagleofva.com

This information is deemed reliable but not guaranteed. All details, dimensions, square footage, illustrations and pricing are approximate and may vary from actual plans and specifications. Contact an Eagle Sales Consultant for details. Current information as of 17th February 2026

THE Pearl Ranch

AT THE PRESERVE VILLAS



eagleofva.com

This information is deemed reliable but not guaranteed. All details, dimensions, square footage, illustrations and pricing are approximate and may vary from actual plans and specifications. Contact an Eagle Sales Consultant for details. Current information as of 17th February 2026