





3025 Poole Place

AT THE PRESERVE VILLAS



-  3 Bedrooms
-  2.0 Bathrooms
-  1791 Square Feet
-  2 Car Garage

\$499,900



The Lillie is the one level townhome you've been looking for. Complete with 2-car garage, the Lillie provides just the right amount of space. Enter from your garage and into the laundry room and mud room, complete with an additional storage closet. The open concept layout offers a kitchen with pantry and large island overlooking the dining area and family room, perfect for keeping everyone connected. Your primary bedroom is tucked down a hallway with a spacious primary bath and large walk-in closet. At the front of the home you'll find an additional two bedrooms and a full bath.

Features of this Home

- Granite countertops
- Gas range
- Laminate flooring
- Serenity shower in primary bath
- Florida Room

eagleofva.com

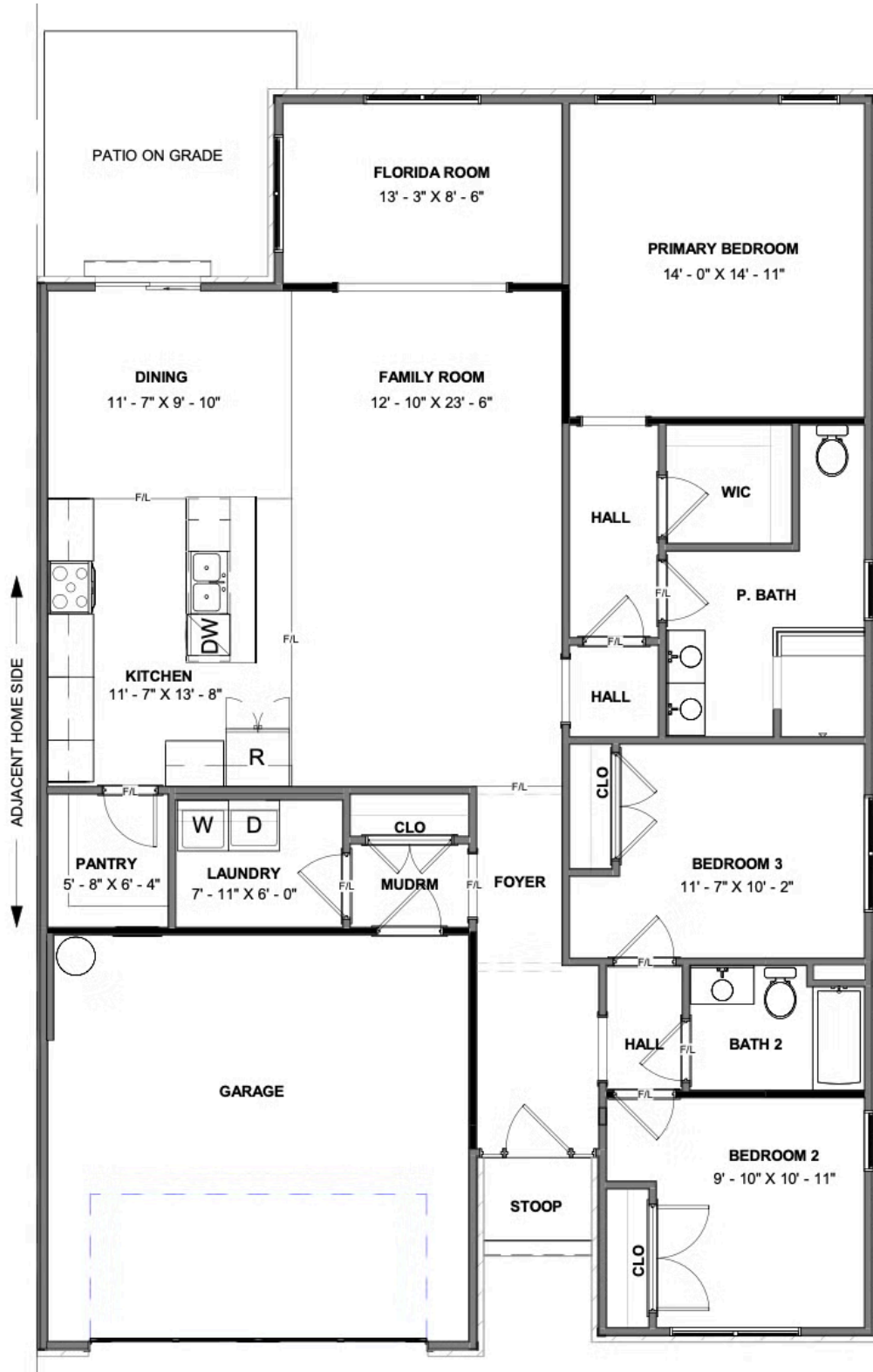
This information is deemed reliable but not guaranteed. All details, dimensions, square footage, illustrations and pricing are approximate and may vary from actual plans and specifications. Contact an Eagle Sales Consultant for details. Current information as of 2nd January 2026

3025 Poole Place

AT THE PRESERVE VILLAS



FIRST FLOOR



eagleofva.com