





# 3015 Poole Place

AT THE PRESERVE VILLAS



-  3 Bedrooms
-  2.0 Bathrooms
-  1791 Square Feet
-  2 Car Garage

**\$499,900**



The Lillie is the one level townhome you've been looking for. Complete with 2-car garage, the Lillie provides just the right amount of space. Enter from your garage and into the laundry room and mud room, complete with an additional storage closet. The open concept layout offers a kitchen with pantry and large island overlooking the dining area and family room, perfect for keeping everyone connected. Your primary bedroom is tucked down a hallway with a spacious primary bath and large walk-in closet. At the front of the home you'll find two additional bedrooms and a full bath.

## Features of this Home

- Granite countertops
- Laminate flooring
- Florida Room
- Walk-In Pantry
- Serenity Shower in Primary Bath

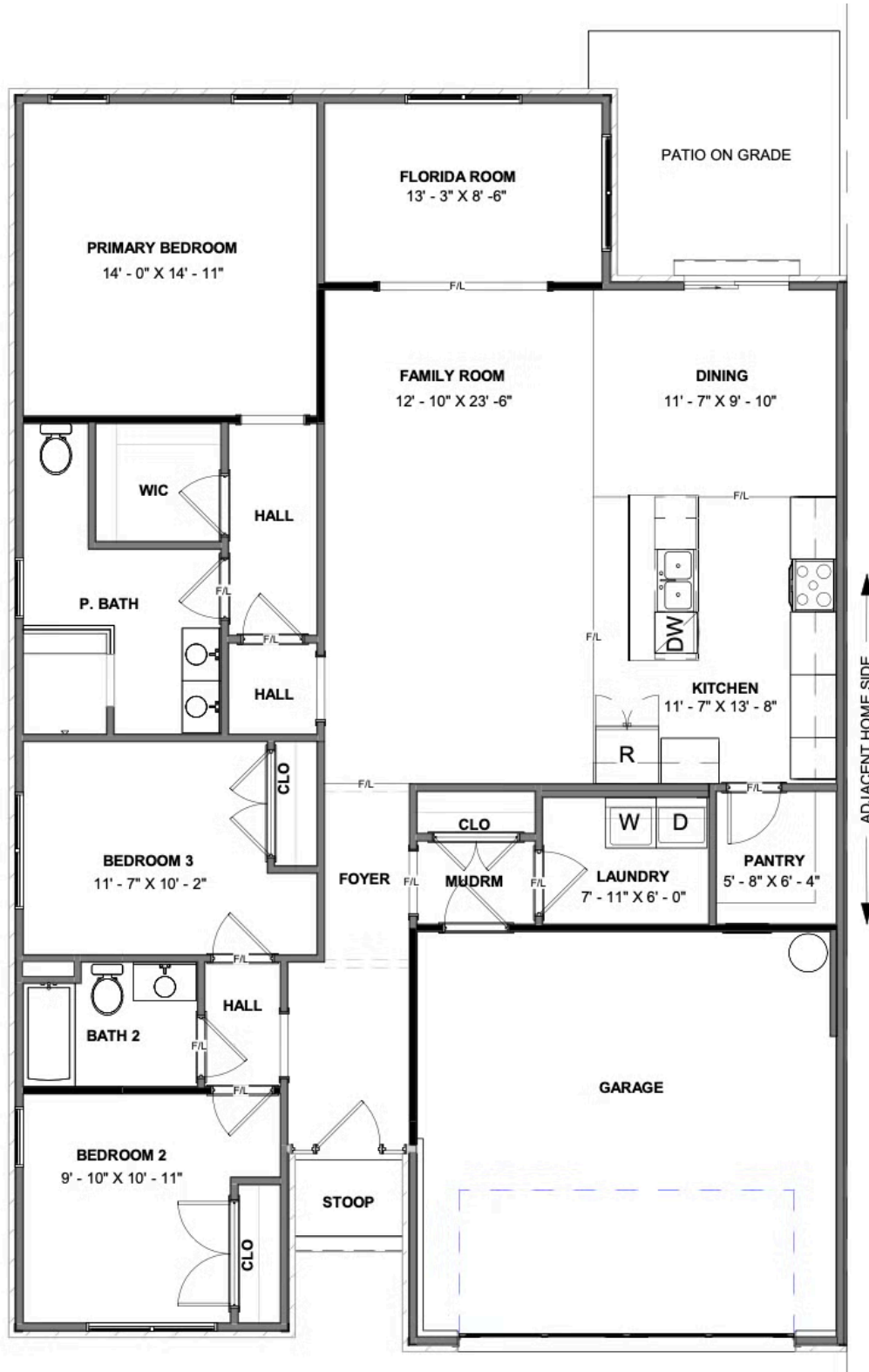
[eagleofva.com](http://eagleofva.com)

# 3015 Poole Place

AT THE PRESERVE VILLAS



## FIRST FLOOR



eagleofva.com