

-  3 Bedrooms
-  3.0 Bathrooms
-  2330 Square Feet

\$514,227

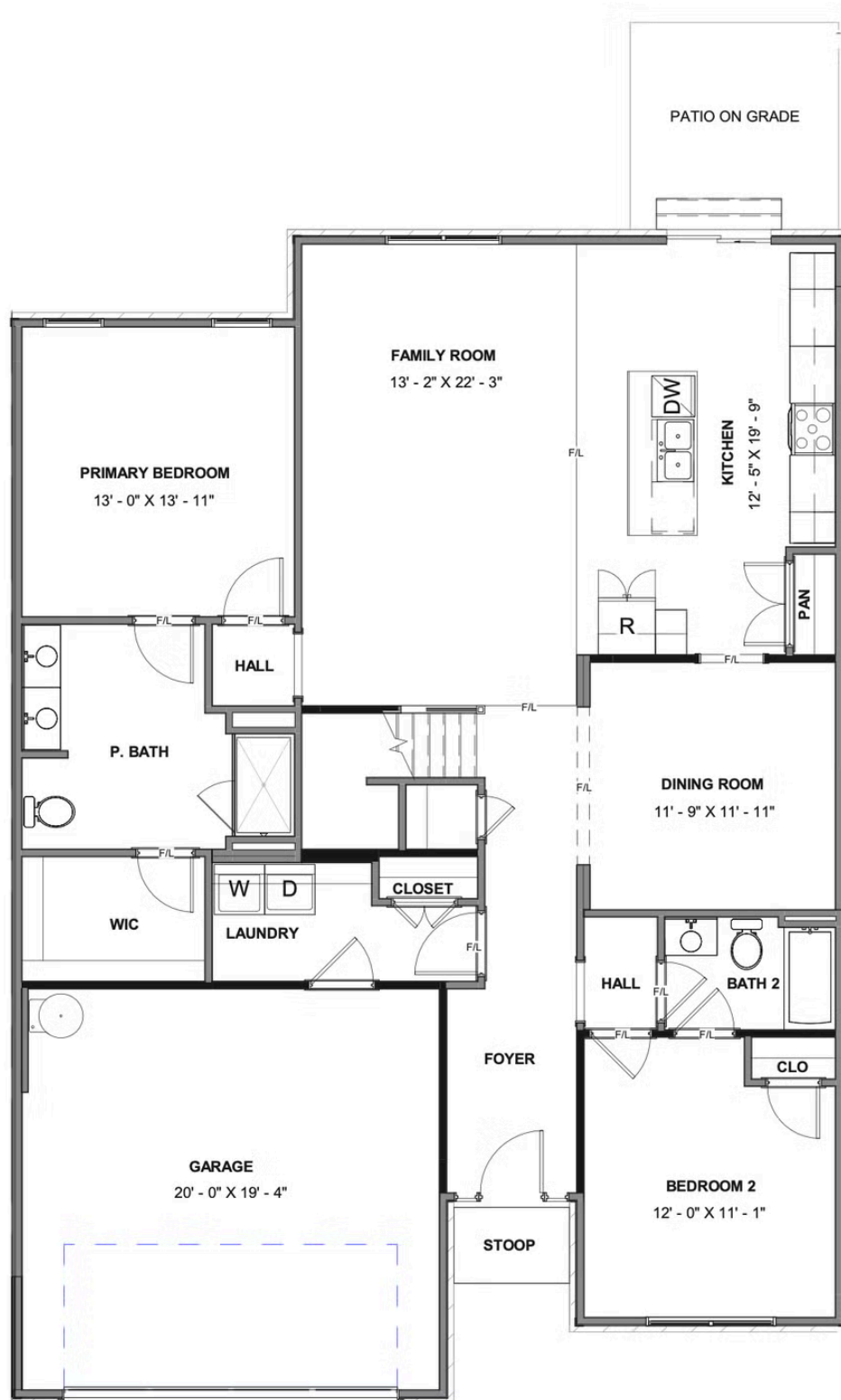


Welcome home to the Brady, a 2-story townhome with 2-car garage and plenty of room to spread out and call your own. Enter through the garage and into your laundry/mud room. The open concept kitchen features a large island overlooking the family room, spacious pantry, and access to the dining room. Tucked off the family room is your primary bedroom retreat with large primary bath and walk-in closet. A second bedroom and full bath can be found at the front of the home. Head on up to your second floor where you'll find a loft, third bedroom with walk-in closet, and full bath.

Features of this Home

- Hardwood Stairs
- Recessed Lighting
- Leathered Granite Countertops
- 42" Cabinets

FIRST FLOOR



SECOND FLOOR

