





1995 Kyles Way

AT THE PRESERVE TOWNHOMES AND DUPLEXES



-  2 Bedrooms
-  2.5 Bathrooms
-  1421 Square Feet
-  2 Car Garage

\$398,367



Brand new to The Preserve Townhomes - Millcreek with 2-car garage and basement! The Millcreek with 2-car garage is a spacious 3-story new construction townhome for sale in Blacksburg, VA. Enjoy open concept main level living flowing from your family room to an eat in dining room, all the way to your functional kitchen with island! Head up to the second floor where you will find dual primary bedrooms each with their own private bath, as well as a laundry room. Head down to the basement level where you will find a finished flex room and your 2-car garage. Enjoy scenic mountain views from your front porch just minutes from downtown Blacksburg, schools, shopping, and easy access to 460!

Features of this Home

- 2-Car Garage and Flex Space on Basement Level
- Hardwood Stairs
- Luxury Painted Cabinets and Granite Countertops in Kitchen
- LED Recessed Lighting Package with Dimmer Switch in Kitchen
- Hard Surface Laminate Flooring on Entire Main Level of This Home
- Frameless Shower Door in Primary Bathroom
- Ceramic Tile in Primary and Secondary Bathrooms and Laundry Room

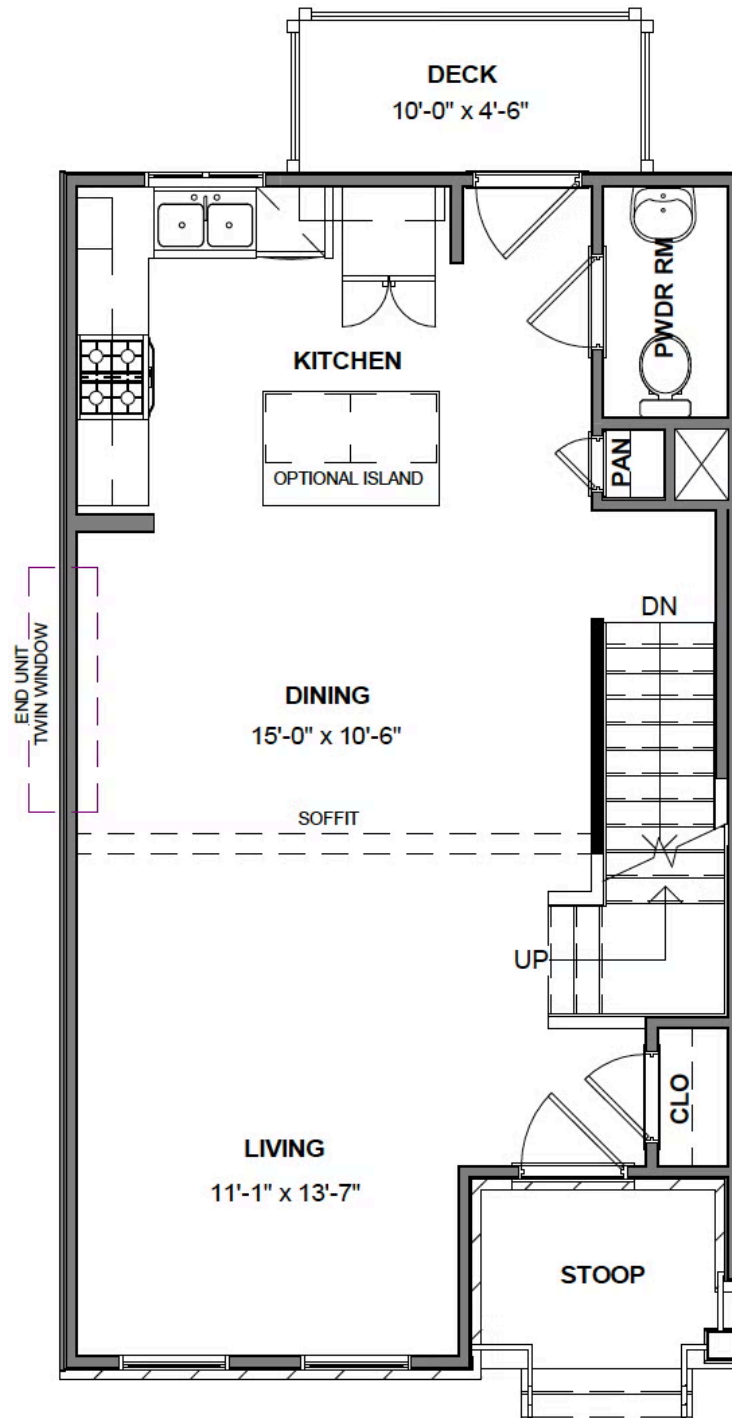
eagleofva.com

1995 Kyles Way

AT THE PRESERVE TOWNHOMES AND DUPLEXES



FIRST FLOOR



eagleofva.com

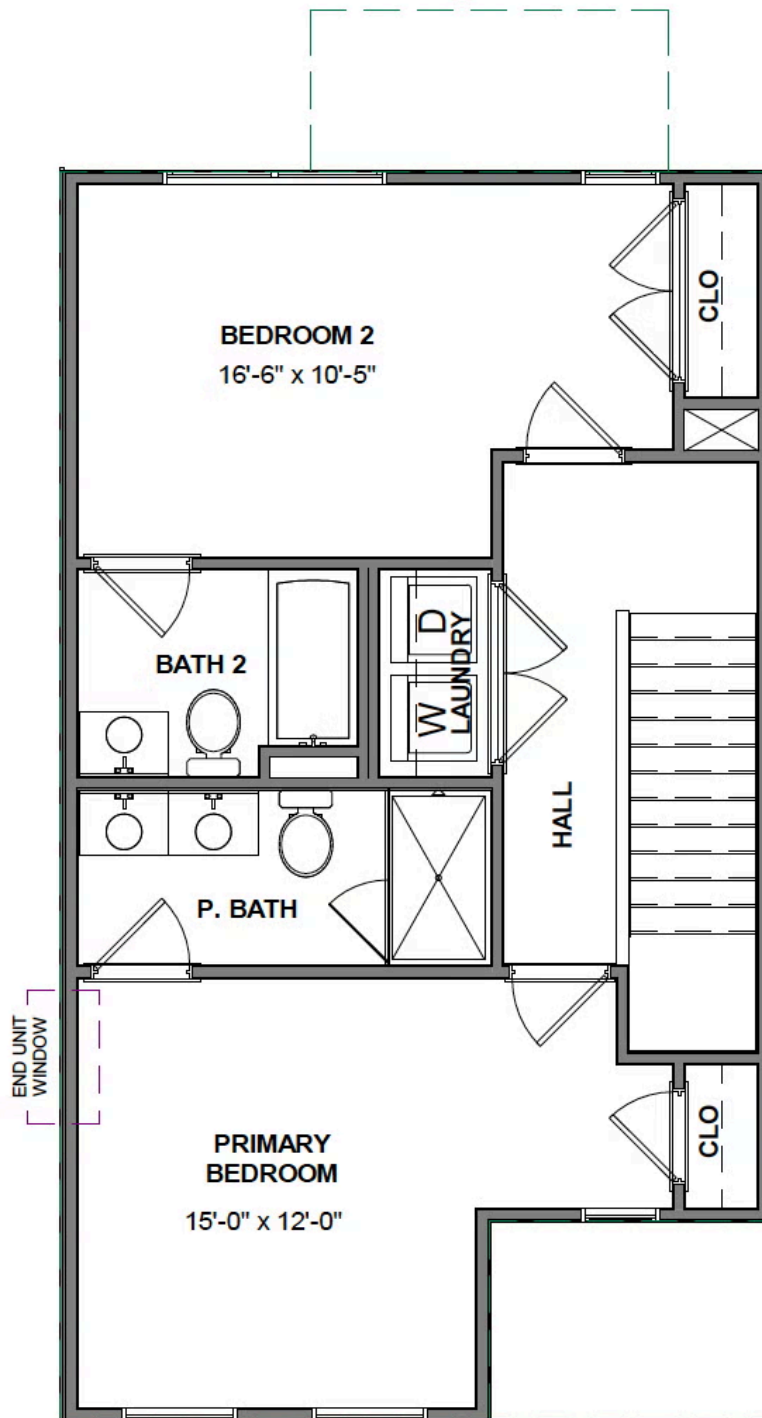
This information is deemed reliable but not guaranteed. All details, dimensions, square footage, illustrations and pricing are approximate and may vary from actual plans and specifications. Contact an Eagle Sales Consultant for details. Current information as of 18th August 2025

1995 Kyles Way

AT THE PRESERVE TOWNHOMES AND DUPLEXES



SECOND FLOOR



eagleofva.com

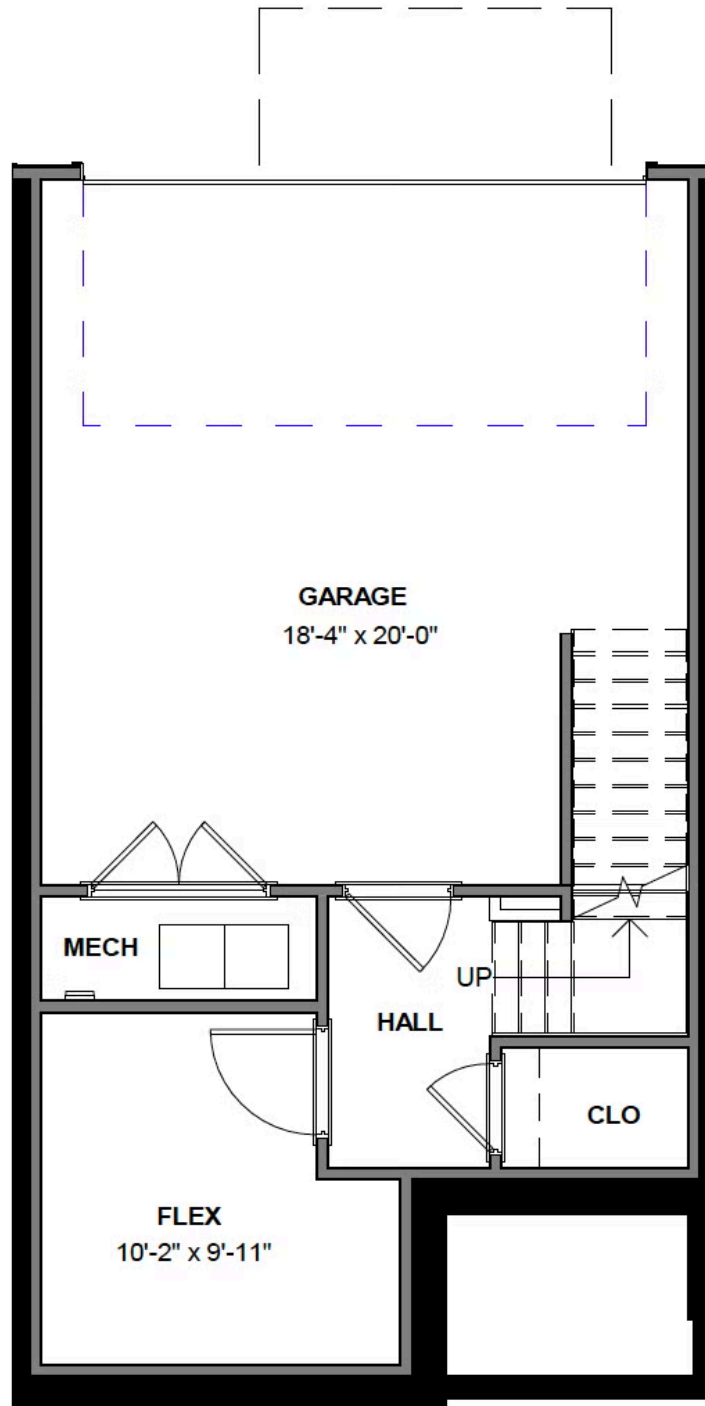
This information is deemed reliable but not guaranteed. All details, dimensions, square footage, illustrations and pricing are approximate and may vary from actual plans and specifications. Contact an Eagle Sales Consultant for details. Current information as of 18th August 2025

1995 Kyles Way

AT THE PRESERVE TOWNHOMES AND DUPLEXES



BASEMENT



eagleofva.com

This information is deemed reliable but not guaranteed. All details, dimensions, square footage, illustrations and pricing are approximate and may vary from actual plans and specifications. Contact an Eagle Sales Consultant for details. Current information as of 18th August 2025