

# 1965 Kyles Way

AT THE PRESERVE TOWNHOMES AND DUPLEXES



-  3 Bedrooms
-  3.0 Bathrooms
-  2330 Square Feet

**\$549,858**



**Brand new floorplan!** Welcome home to the Brady, a 2-story townhome with 2-car garage and plenty of room to spread out and call your own. Enter through the garage and into your laundry/mud room. The open concept kitchen features a large island overlooking the family room, spacious pantry, and access to the dining room. Tucked off the family room is your primary bedroom retreat with large primary bath and walk-in closet. A second bedroom and full bath can be found at the front of the home. Head on up to your second floor where you'll find a loft, third bedroom with walk-in closet, and full bath.

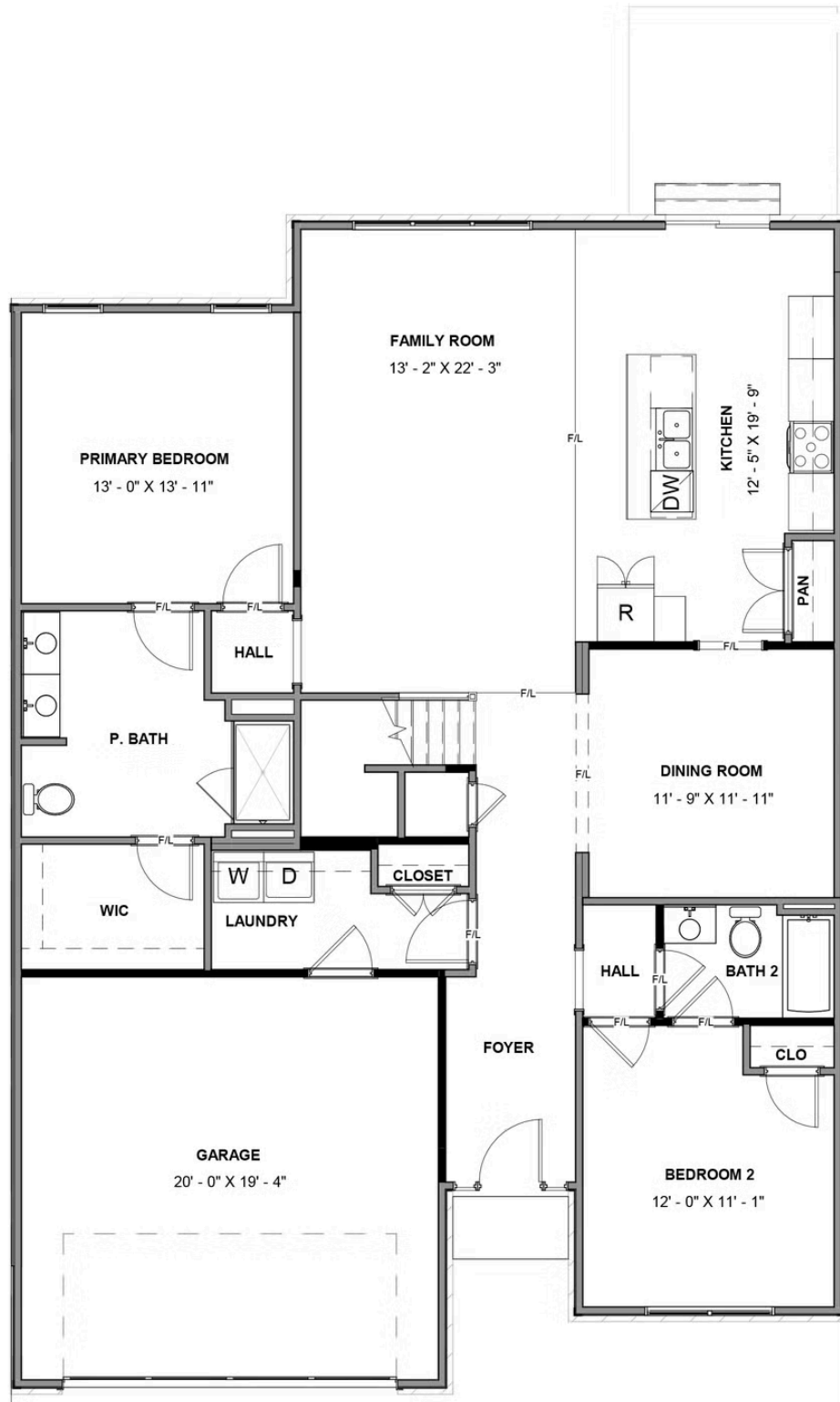
[eagleofva.com](http://eagleofva.com)

# 1965 Kyles Way

AT THE PRESERVE TOWNHOMES AND DUPLEXES



## FIRST FLOOR



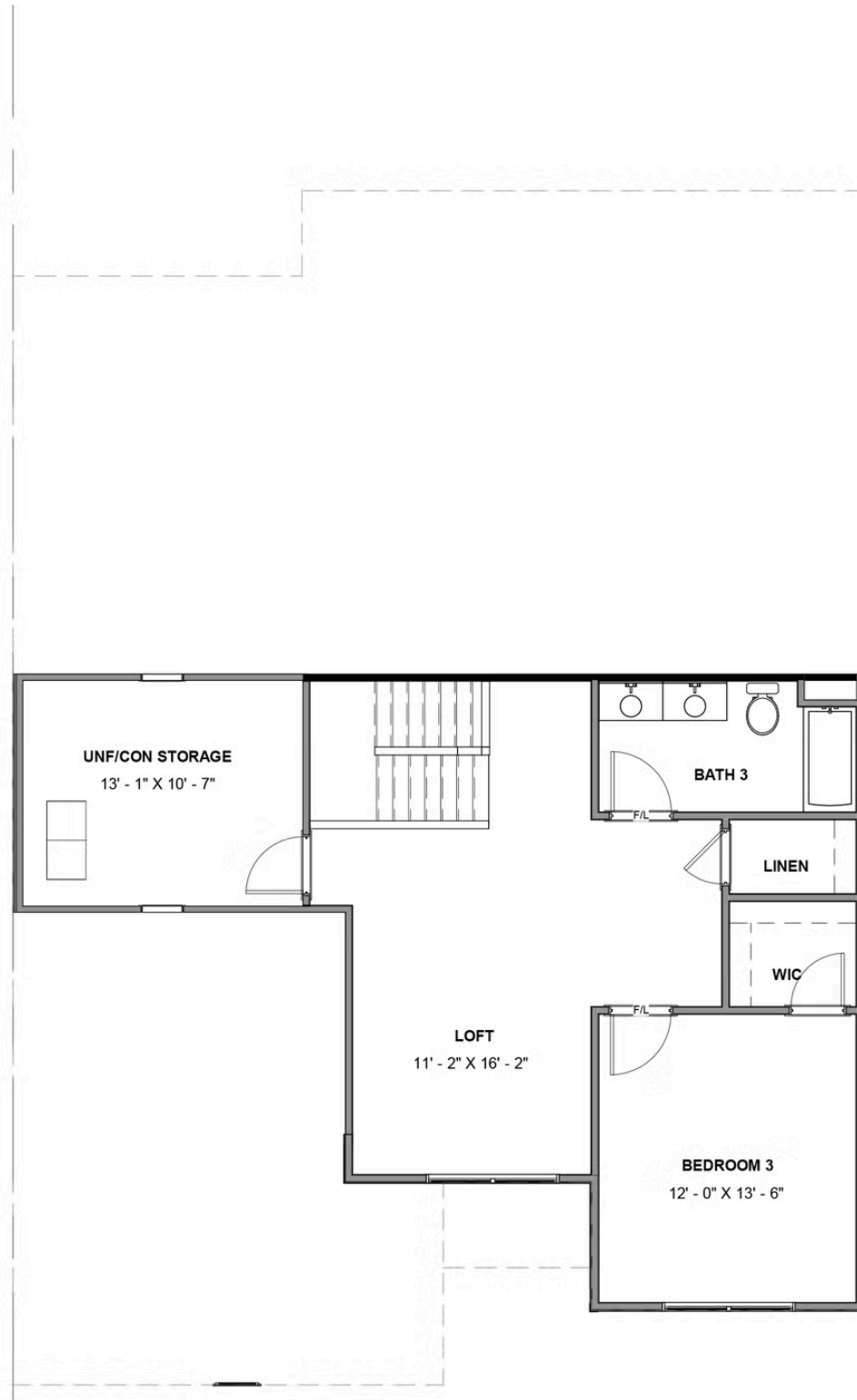
[eagleofva.com](http://eagleofva.com)

# 1965 Kyles Way

AT THE PRESERVE TOWNHOMES AND DUPLEXES



## SECOND FLOOR



[eagleofva.com](http://eagleofva.com)

This information is deemed reliable but not guaranteed. All details, dimensions, square footage, illustrations and pricing are approximate and may vary from actual plans and specifications. Contact an Eagle Sales Consultant for details. Current information as of 25th April 2025