





# 1955 Kyles Way

AT THE PRESERVE TOWNHOMES AND DUPLEXES



-  2 Bedrooms
-  2.5 Bathrooms
-  1459 Square Feet
-  2 Car Garage

**\$492,635**



**Brand new floor plan!** Introducing the Pearl Ranch Duplex: a one level plan that is anything but ordinary. Enter the home from your 2-car garage and step into your mudroom/laundry room. Just steps away is your spacious kitchen with large island, walk-in corner pantry, and plenty of cabinet space. The island overlooks both the breakfast nook and the family room, ideal for staying connected. Off the breakfast nook you'll find a patio where you can enjoy your morning coffee or wind down in the evening. The primary bedroom is tucked away at the rear of the home, boasting a walk-in closet and large primary bath with separate water closet and dual sink vanity. At the front of the home you will find an additional bedroom with full bath and walk-in closet.

## Features of this Home

- Granite Countertops
- Gas Fireplace
- Laminate Flooring
- Walk-In Pantry
- Painted Kitchen Cabinets
- Backyard Patio

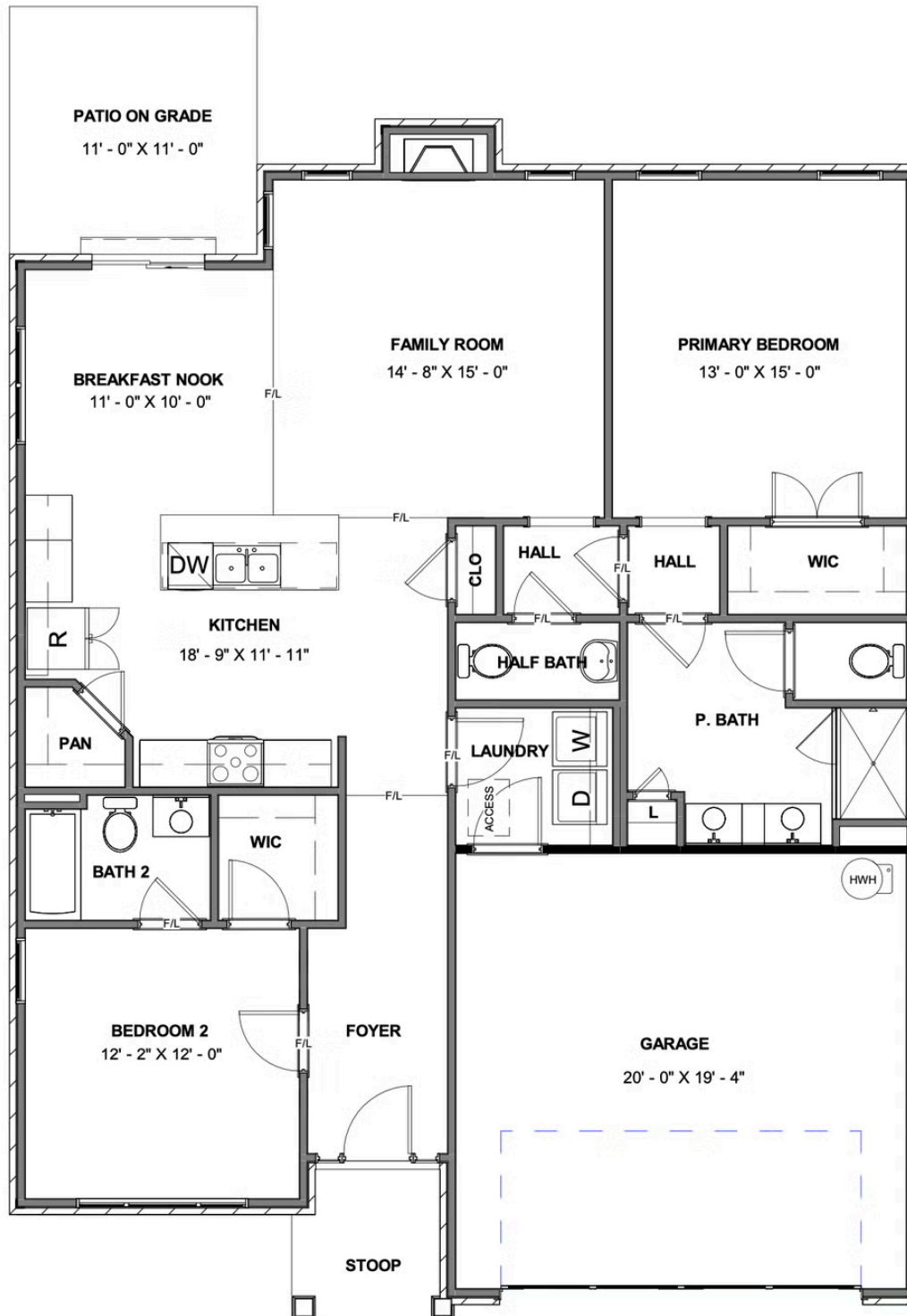
[eagleofva.com](http://eagleofva.com)

# 1955 Kyles Way

AT THE PRESERVE TOWNHOMES AND DUPLEXES



## FIRST FLOOR



eagleofva.com