






# THE Pearl Terrace

AT THE PRESERVE SINGLE FAMILY HOMES



-  3 Bedrooms
-  2.5 Bathrooms
-  2,170 Square Feet
-  2 Car Garage
-  2 Levels



**Brand new floor plan!** The Pearl Terrace offers the perfect blend of comfort and functionality, catering to modern living with both style and ease. The main level features a spacious family room, a gourmet kitchen with breakfast nook that opens to a deck, and a formal dining room.

The secluded first floor primary suite includes a walk-in closet and private bath, while a convenient laundry room and half bath finish out the main level. The terrace (basement) level adds two cozy bedrooms, a full bath, and generous unfinished storage areas. A rec room can be added for more room to spread out while entertaining or relaxing. And an attached 2-car garage gives you even more space.

## Features of this Floorplan

- Main level living with walk-out terrace (basement level)
- Primary bedroom on main floor with spacious attached primary bath
- Dining room
- Deck
- Terrace level features 2 additional bedrooms and full bath with the ability to add a rec room
- Large unfinished/conditioned storage space

[eagleofva.com](http://eagleofva.com)

# THE Pearl Terrace

AT THE PRESERVE SINGLE FAMILY HOMES



[eagleofva.com](http://eagleofva.com)

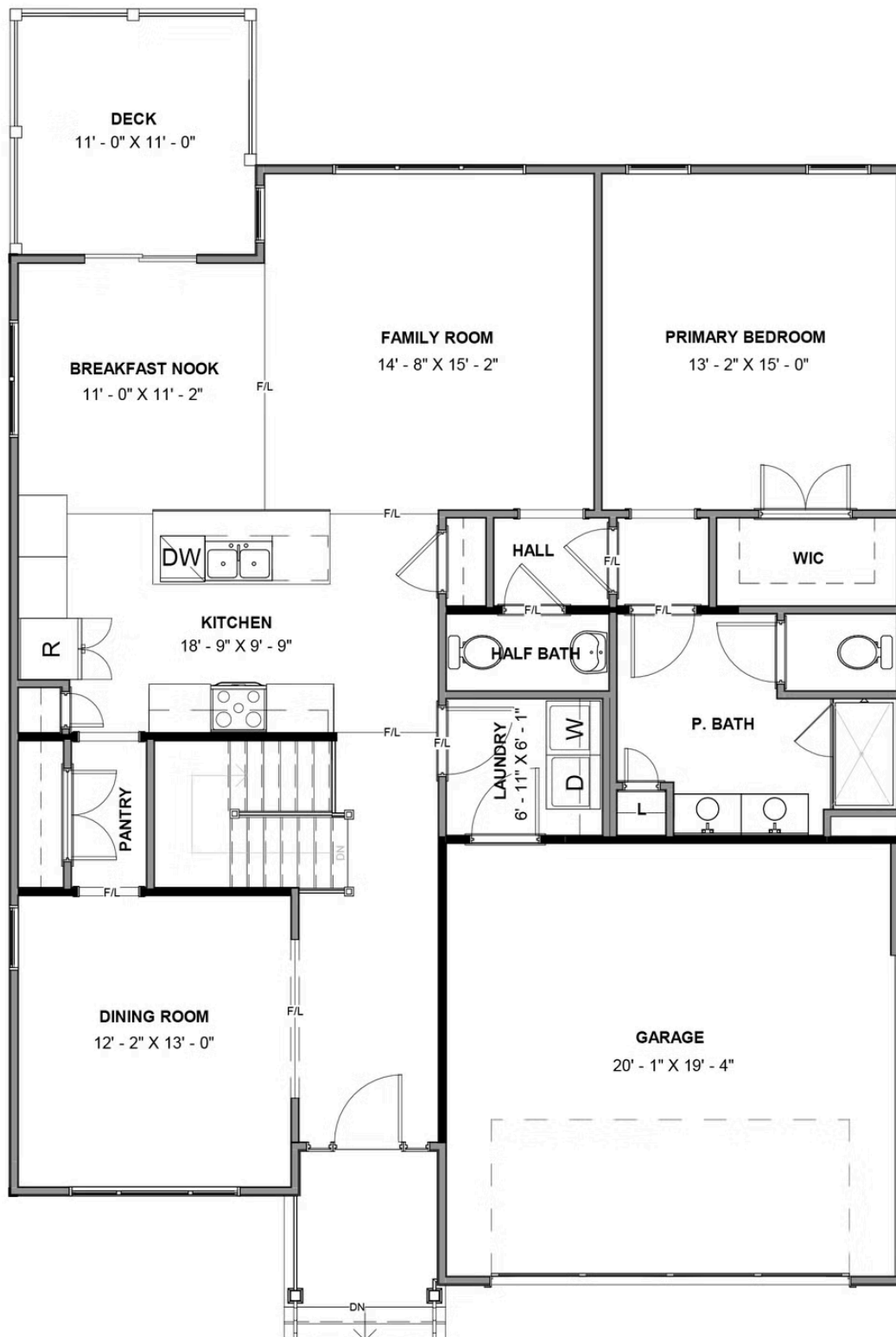
This information is deemed reliable but not guaranteed. All details, dimensions, square footage, illustrations and pricing are approximate and may vary from actual plans and specifications. Contact an Eagle Sales Consultant for details. Current information as of 25th April 2025

# THE Pearl Terrace

AT THE PRESERVE SINGLE FAMILY HOMES



## MAIN LEVEL



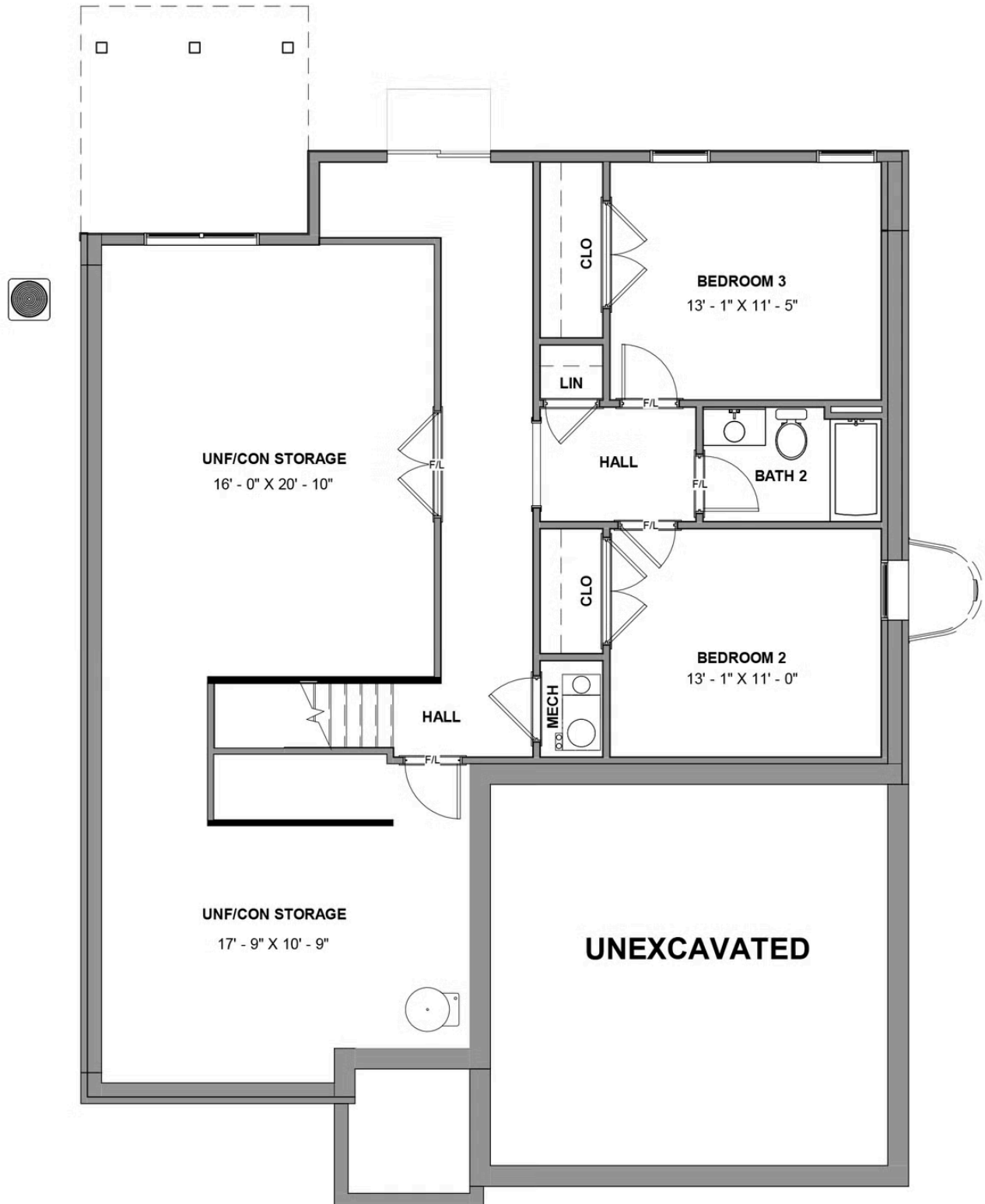
eagleofva.com

# THE Pearl Terrace

AT THE PRESERVE SINGLE FAMILY HOMES



## TERRACE LEVEL



eagleofva.com