





3346 Natalies Way

AT THE PRESERVE SINGLE FAMILY HOMES



-  4 Bedrooms
-  3.5 Bathrooms
-  2641 Square Feet
-  2 Car Garage

\$736,913



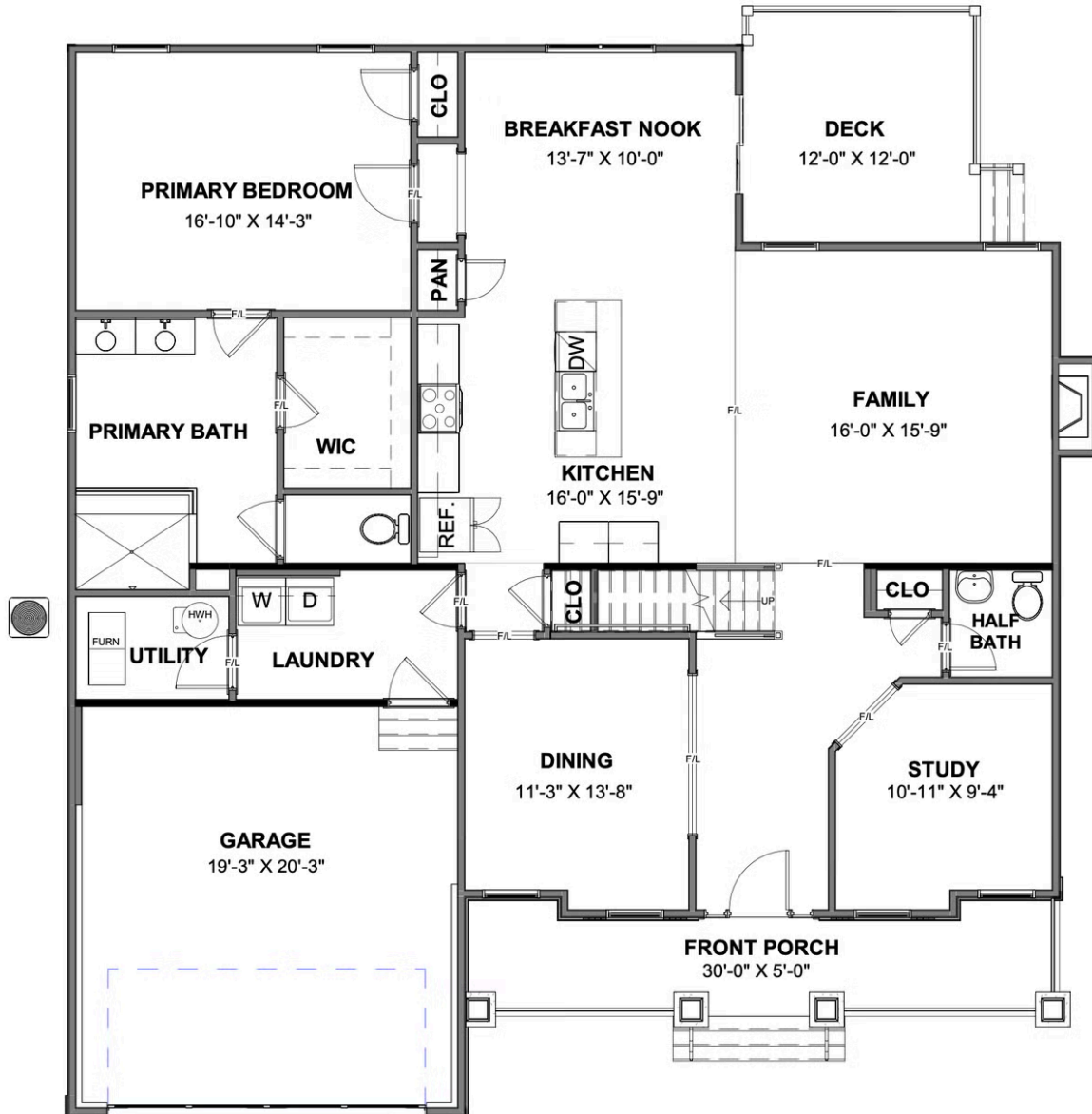
The Westminster is a 2 story single family new home floor plan with 4 bedrooms, 3.5 baths, and over 2,600 square feet of living space to personalize for your lifestyle. Walk in the front door and you'll find a foyer flanked by a formal Dining Room and Study. Enter your spacious Family Room and discover that it flows right into the Kitchen with a large island, perfect for cooking and entertaining. Tucked away you'll find your first floor primary bedroom suite which features a huge walk-in closet and a spacious primary bathroom with multiple layouts. To finish out the first floor, there is a deck off of the breakfast nook. The second floor of the home features 3 additional bedrooms with walk-in closets, two full baths, and an unfinished conditioned storage area.

Features of this Home

- Serenity Primary Bath with Enlarged Ceramic Tile Shower
- Additional Bedroom #4 with Attached Bathroom on Second Floor
- Painted Cabinets and Luxury Granite Countertops in Kitchen
- Hardwood Stairs

eagleofva.com

FIRST FLOOR



SECOND FLOOR

