





3100 Natalies Way

AT THE PRESERVE SINGLE FAMILY HOMES



-  4 Bedrooms
-  3.5 Bathrooms
-  3094 Square Feet
-  2 Car Garage

\$699,900



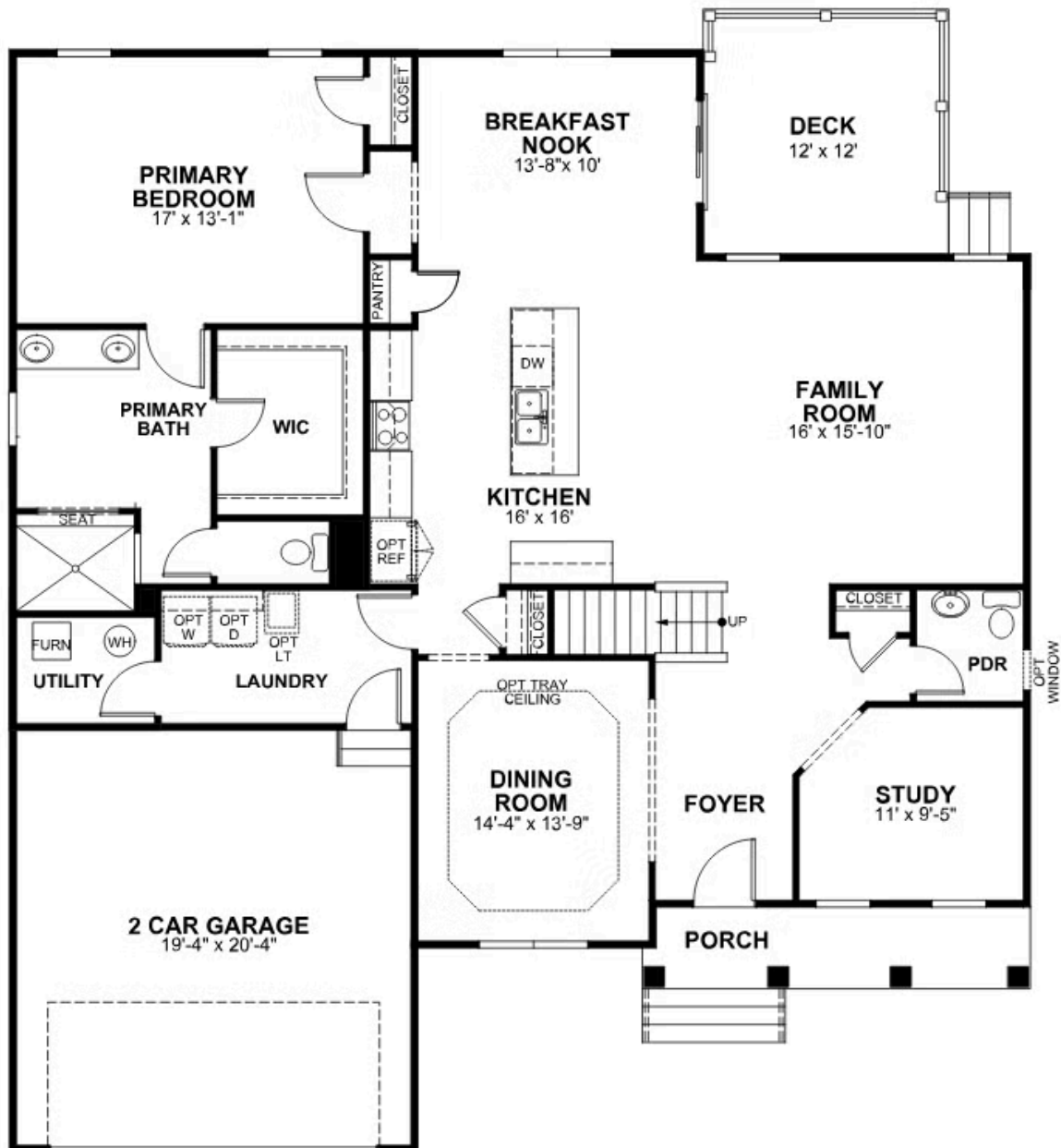
The Westminster is a 2 story single family home floor plan with 4 bedrooms, 3.5 baths, and over 3,000 square feet of living space to personalize for your lifestyle. Walk in the front door and you'll find a foyer flanked by a formal Dining Room and Study. Enter your spacious Family Room and discover that it flows right into the Kitchen with a large island, perfect for cooking and entertaining. Tucked away you'll find your first floor primary bedroom suite which features a huge walk-in closet and a spacious primary bathroom with multiple layouts. The second floor of the home features 3 additional bedrooms with walk-in closets, two full baths, and a large finished bonus room.

Features of this Home

- Additional Bedroom #4 with Attached Full Bath
- Serenity Primary Bathroom with Enlarged Shower
- Luxury Granite Countertops in Kitchen
- Laminate Hardsurface Flooring on Entire First Level of the Home
- Painted Cabinets in Kitchen
- Bonus Room on 2nd Floor

eagleofva.com

FIRST FLOOR



SECOND FLOOR

