





3100 Natalies Way

AT THE PRESERVE SINGLE FAMILY HOMES



-  4 Bedrooms
-  3.5 Bathrooms
-  3094 Square Feet
-  2 Car Garage

\$705,654



The Westminster is a 2 story single family home floor plan with 4 bedrooms, 3.5 baths, and over 3,000 square feet of living space to personalize for your lifestyle. Walk in the front door and you'll find a foyer flanked by a formal Dining Room and Study. Enter your spacious Family Room and discover that it flows right into the Kitchen with a large island, perfect for cooking and entertaining. Tucked away you'll find your first floor primary bedroom suite which features a huge walk-in closet and a spacious primary bathroom with multiple layouts. The second floor of the home features 3 additional bedrooms with walk-in closets, two full baths, and a large finished bonus room.

Features of this Home

- Additional Bedroom #4 with Attached Full Bath
- Serenity Primary Bathroom with Enlarged Shower
- Bonus Room
- Painted Cabinets in Kitchen
- Bonus Room on 2nd Floor

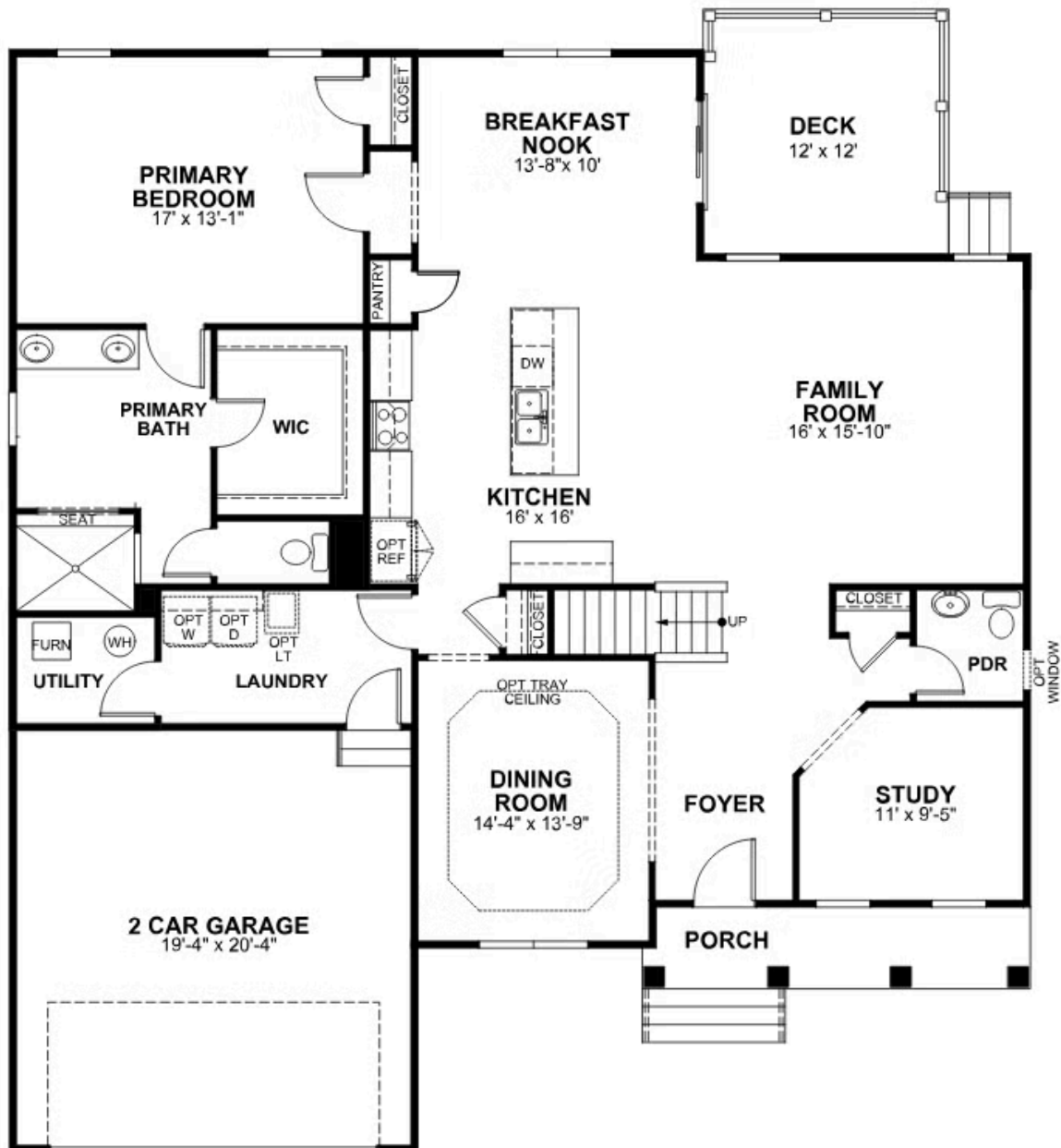
eagleofva.com

3100 Natalies Way

AT THE PRESERVE SINGLE FAMILY HOMES



FIRST FLOOR



eagleofva.com

This information is deemed reliable but not guaranteed. All details, dimensions, square footage, illustrations and pricing are approximate and may vary from actual plans and specifications. Contact an Eagle Sales Consultant for details. Current information as of 31st August 2025

SECOND FLOOR

