





3061 Natalies Way

AT THE PRESERVE SINGLE FAMILY HOMES



-  3 Bedrooms
-  2.5 Bathrooms
-  2701 Square Feet
-  2 Car Garage

\$704,158



A modern classic with ageless appeal, the Linden III is a 2-story plan offering 3 bedrooms, 2.5 baths, a 2-car garage, and over 2,600 square feet of spaciousness ready for your personal touch. The aroma and allure of home cooking draws you in to an expansive kitchen and island overlooking the open breakfast nook and family room, complete with a back deck perfect for chilling and grilling. Tucked down the hallway and past the study, the first floor primary suite offers a secluded escape with a dual-sink bathroom oasis and cavernous walk-in closet. At the front of the house, a formal dining room is ready to host guests and gatherings alike, while a central laundry promises good clean living. Upstairs offers an open loft landing, two bedrooms, a full bath, and ample additional storage.

Features of this Home

- Serenity Primary Bathroom with enlarged shower with bench seat
- Conditioned/Unfinished storage area on second level
- Hardwood stairs
- Painted cabinets, granite countertops and farmhouse sink in kitchen
- Luxury laminate hard surface flooring in foyer, dining room, half bath, kitchen, family room and primary bedroom

eagleofva.com

3061 Natalies Way

AT THE PRESERVE SINGLE FAMILY HOMES



FIRST FLOOR



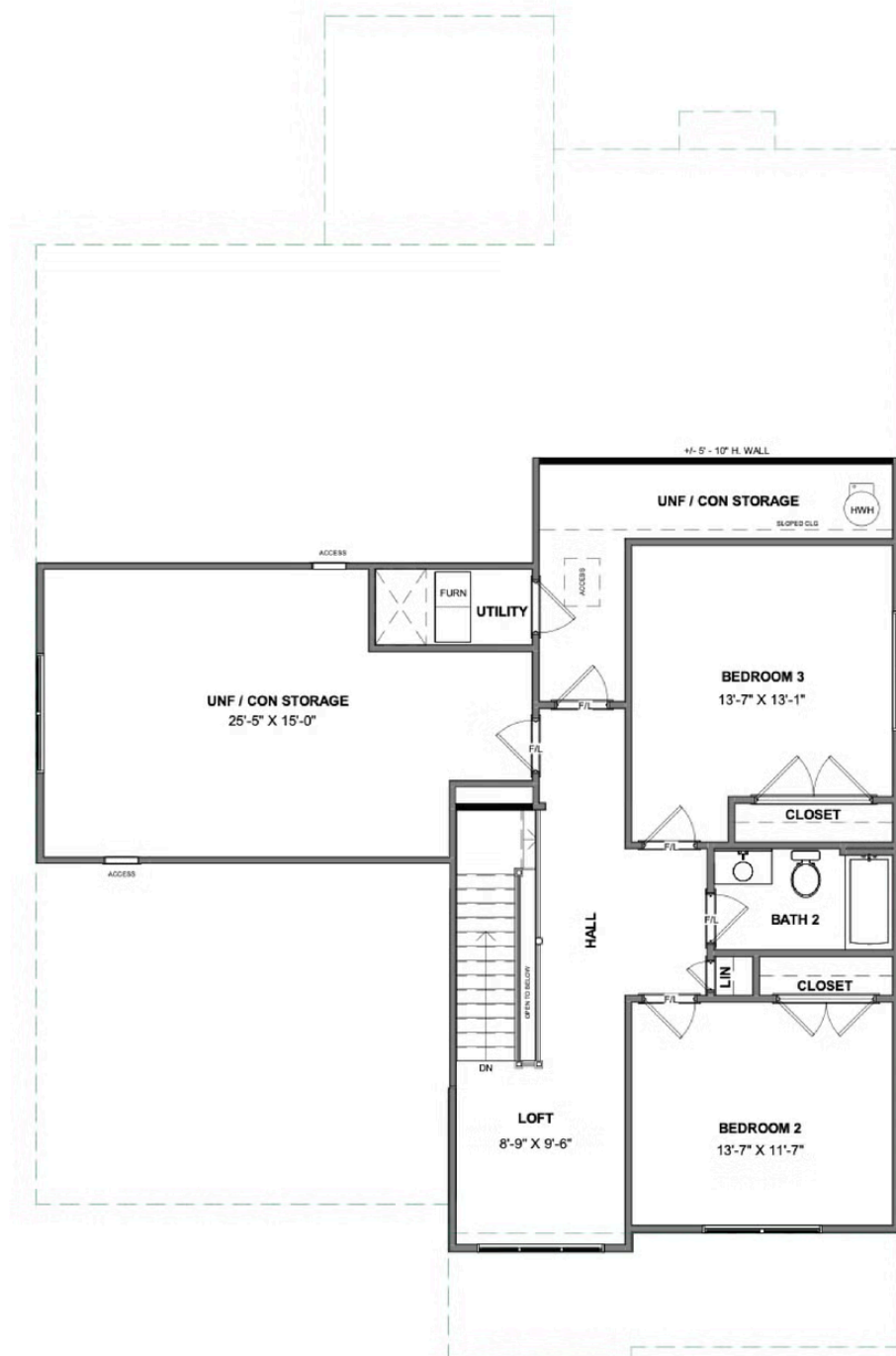
eagleofva.com

3061 Natalies Way

AT THE PRESERVE SINGLE FAMILY HOMES



SECOND FLOOR



eagleofva.com