





3035 Natalies Way

AT THE PRESERVE SINGLE FAMILY HOMES



-  4 Bedrooms
-  3.5 Bathrooms
-  2797 Square Feet
-  2 Car Garage

\$649,900



MOVE-IN READY! The Westminster is a 2 story single family new home floor plan with 4 bedrooms, 3.5 baths, and over 2,700 square feet of living space to personalize for your lifestyle. Walk in the front door and you'll find a foyer flanked by a formal Dining Room and Study. Enter your spacious Family Room and discover that it flows right into the Kitchen with a large island, perfect for cooking and entertaining. Tucked away you'll find your first floor primary bedroom suite which features a huge walk-in closet and a spacious primary bathroom with enlarged shower. The second floor of the home features 3 additional bedrooms with walk-in closets, 2 full baths, and a large unfinished storage area.

Features of this Home

- Serenity Primary Bath with Enlarged Shower
- Bedroom #4 with Attached Full Bath
- Additional Unfinished Storage Area on Second Floor
- Hardwood Stairs
- Fireplace in Family Room
- Gas Range in Kitchen
- LED Recessed Lighting Package in Family Room and Primary Bedroom
- Craftsman Wainscoting in Dining Room
- HD Video Package Above Fireplace
- Hardwood Laminated Flooring on Entire First Floor Including Primary Bedroom

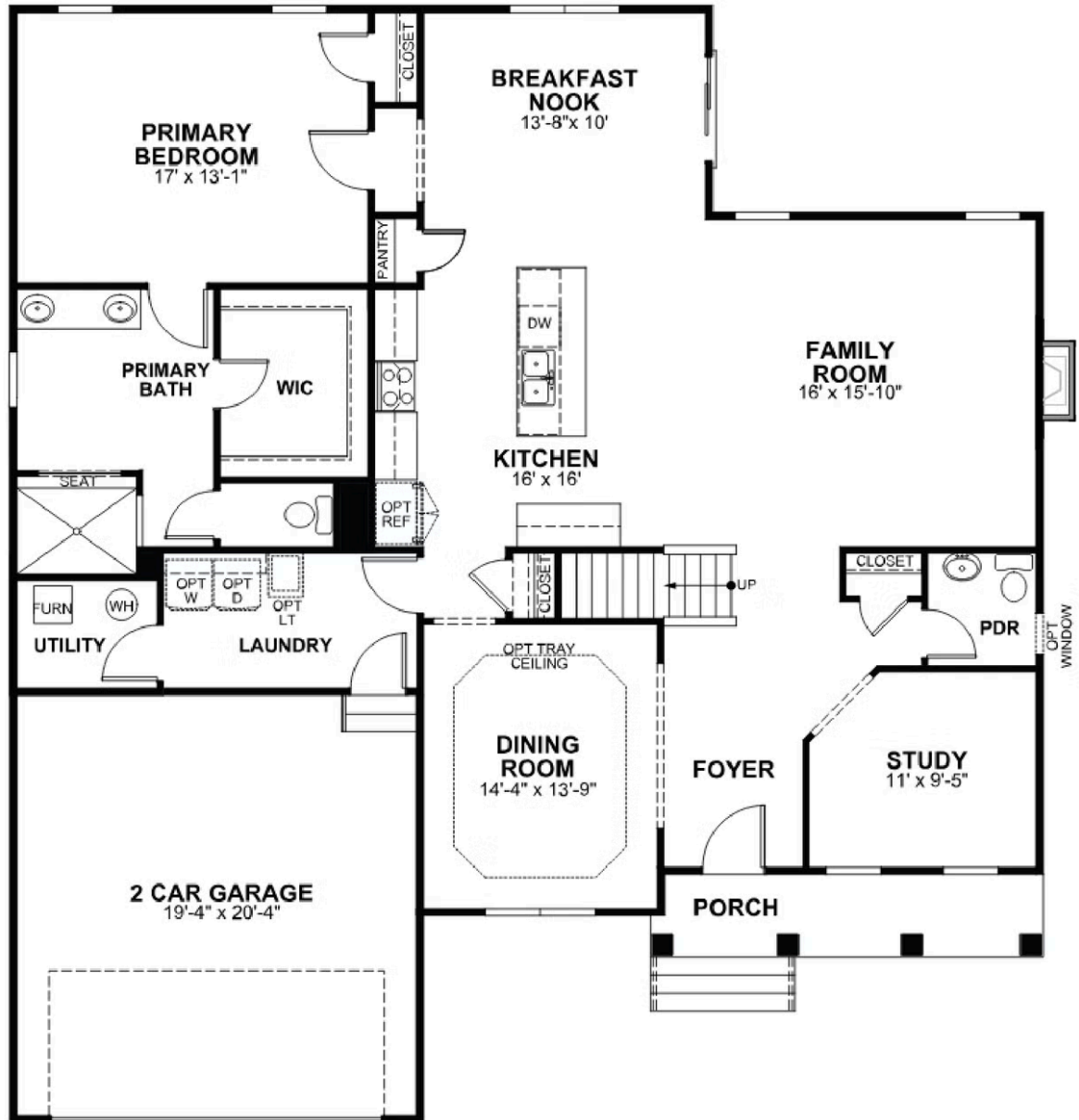
eagleofva.com

3035 Natalies Way

AT THE PRESERVE SINGLE FAMILY HOMES



FIRST FLOOR



eagleofva.com

SECOND FLOOR

