





3015 Natalies Way

AT THE PRESERVE SINGLE FAMILY HOMES



-  4 Bedrooms
-  3.5 Bathrooms
-  3104 Square Feet
-  2 Car Garage

\$699,900



Southern hospitality meets modern sensibilities with the Savannah, a 2-story plan offering 4 bedrooms, 3 baths, a 2-car garage and over 3,100 square feet of tranquility ready for you. Step into the foyer and ambiance of home as a front study and dining room greet you with open arms. Unleash your inner chef in a dream kitchen with acres of cabinets and large island offering scenic views of the breakfast nook and family room beyond. Let the good life begin—and continue upstairs in a primary suite that caters to your every need with its luxurious dual-sink bath and double walk-in closets. 3 additional bedrooms, two full baths, and convenient second floor laundry ensure plenty of space for one and all.

Features of this Home

- Front Porch
- Florida Room
- Coffered Ceiling and LED Recessed Lighting in Family Room
- Expanded Kitchen and Family Room
- Convection Gas Range and KitchenAid Range Hood
- Hardwood Stairs
- Custom Finished Garage

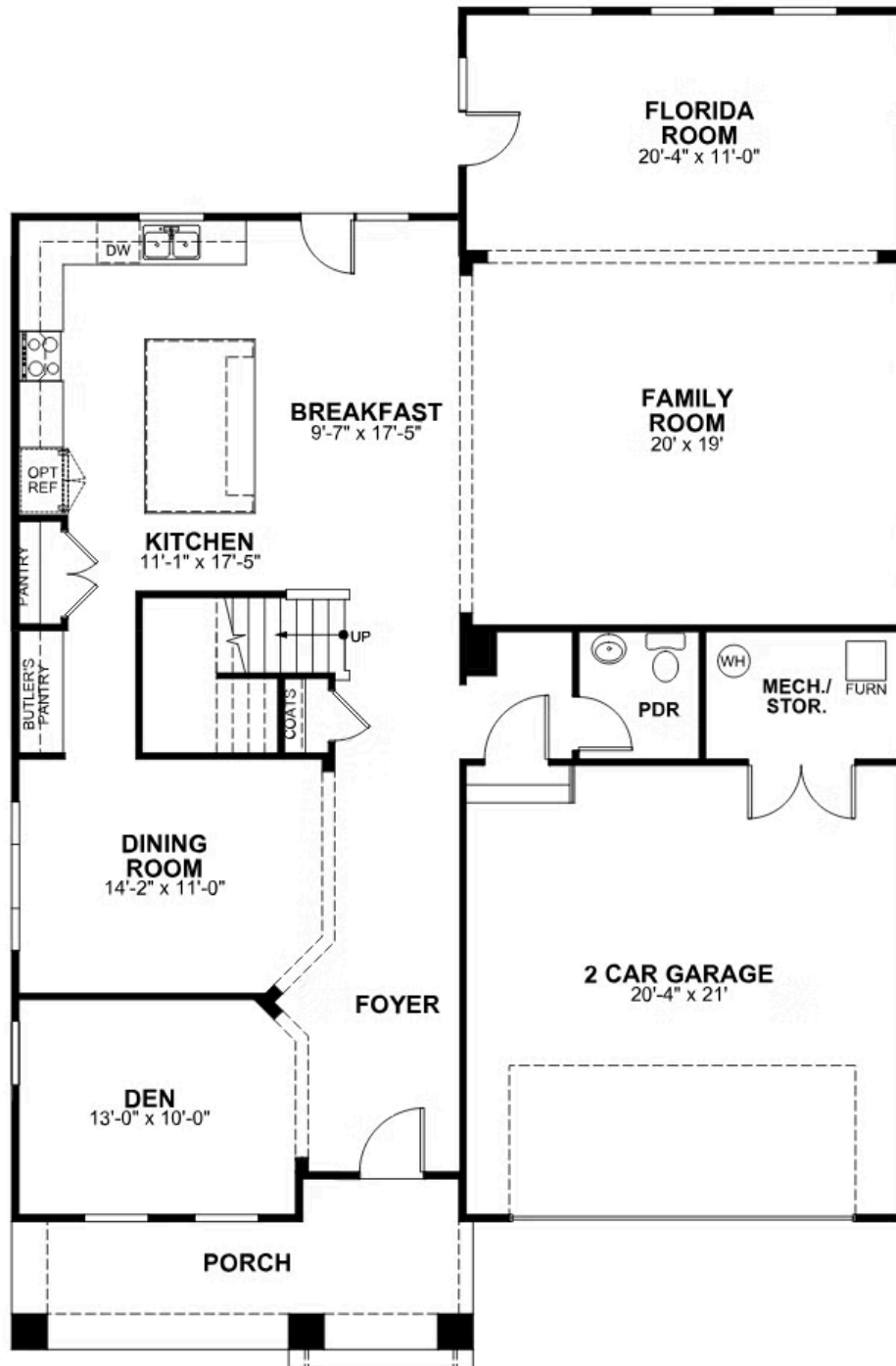
eagleofva.com

3015 Natalies Way

AT THE PRESERVE SINGLE FAMILY HOMES



FIRST FLOOR



eagleofva.com

SECOND FLOOR

