





# 1960 Kyles Way

AT THE PRESERVE SINGLE FAMILY HOMES



-  4 Bedrooms
-  3.5 Bathrooms
-  2850 Square Feet
-  2 Car Garage

**\$724,805**



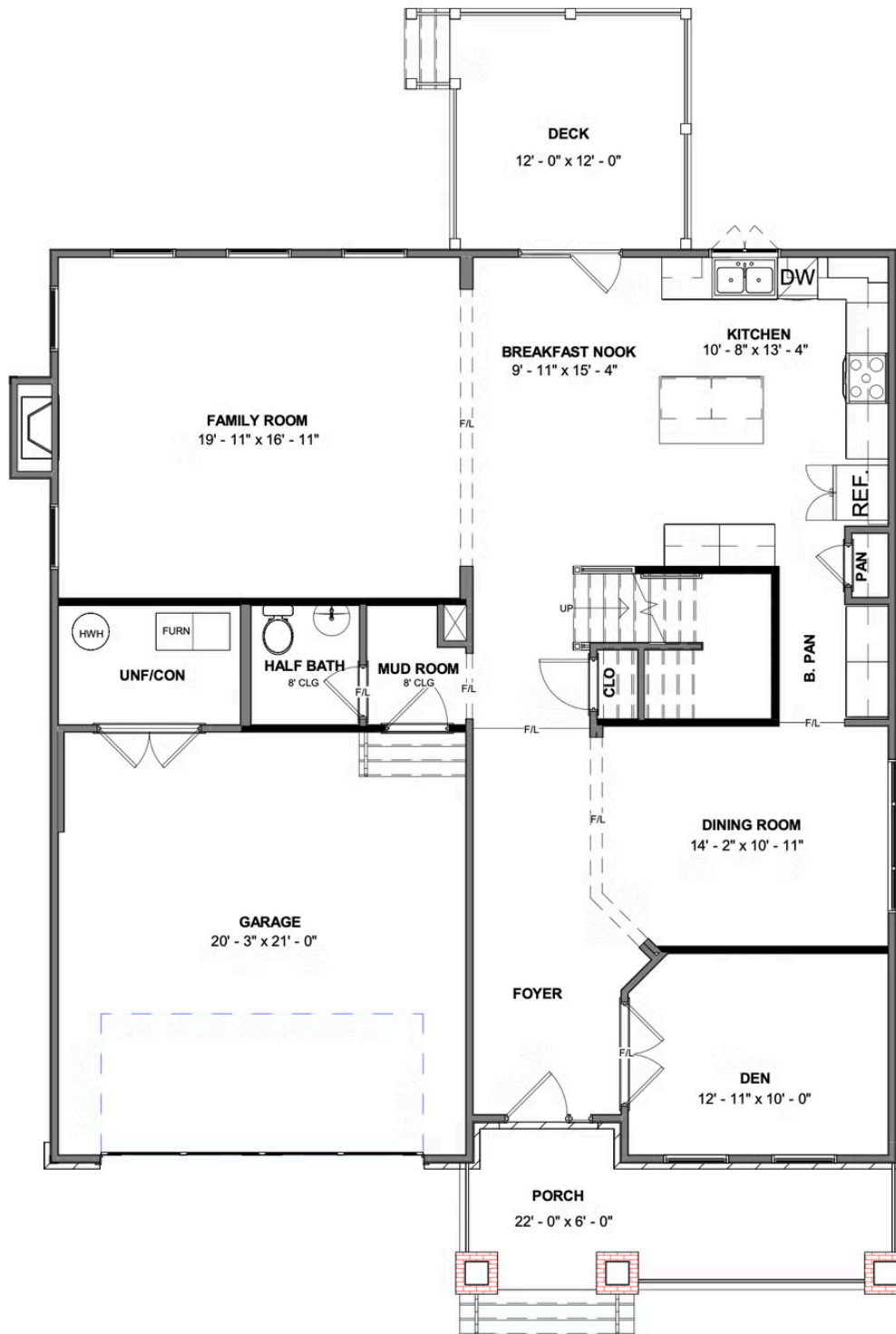
Southern hospitality meets modern sensibilities with the Savannah, a 2-story plan offering 4 bedrooms, 3.5 baths, a 2-car garage and over 2,800 square feet of tranquility ready for personalization. Step into the foyer and ambiance of home as a front study and dining room greet you with open arms. Unleash your inner chef in a dream kitchen with acres of cabinets and large island offering scenic views of the breakfast nook and family room beyond. Let the good life begin—and continue upstairs in a primary suite that caters to your every need with its luxurious dual-sink bath and double walk-in closets. Four additional bedrooms, two full baths, and convenient second floor laundry ensure plenty of space for one and all.

## Features of this Home

- Tall crawlspace
- Optional bathroom #3
- Painted cabinets and luxury granite countertops in kitchen
- Fireplace in family room
- Stainless steel appliances in kitchen

[eagleofva.com](http://eagleofva.com)

## FIRST FLOOR



## SECOND FLOOR

