





1960 Kyles Way

AT THE PRESERVE SINGLE FAMILY HOMES



-  4 Bedrooms
-  3.5 Bathrooms
-  2850 Square Feet
-  2 Car Garage

\$724,805



Southern hospitality meets modern sensibilities with the Savannah, a 2-story plan offering 4 bedrooms, 3.5 baths, a 2-car garage and over 2,800 square feet of tranquility ready for personalization. Step into the foyer and ambiance of home as a front study and dining room greet you with open arms. Unleash your inner chef in a dream kitchen with acres of cabinets and large island offering scenic views of the breakfast nook and family room beyond. Let the good life begin—and continue upstairs in a primary suite that caters to your every need with its luxurious dual-sink bath and double walk-in closets. Four additional bedrooms, two full baths, and convenient second floor laundry ensure plenty of space for one and all.

Features of this Home

- Tall crawlspace
- Optional bathroom #3
- Painted cabinets and luxury granite countertops in kitchen
- Fireplace in family room
- Stainless steel appliances in kitchen

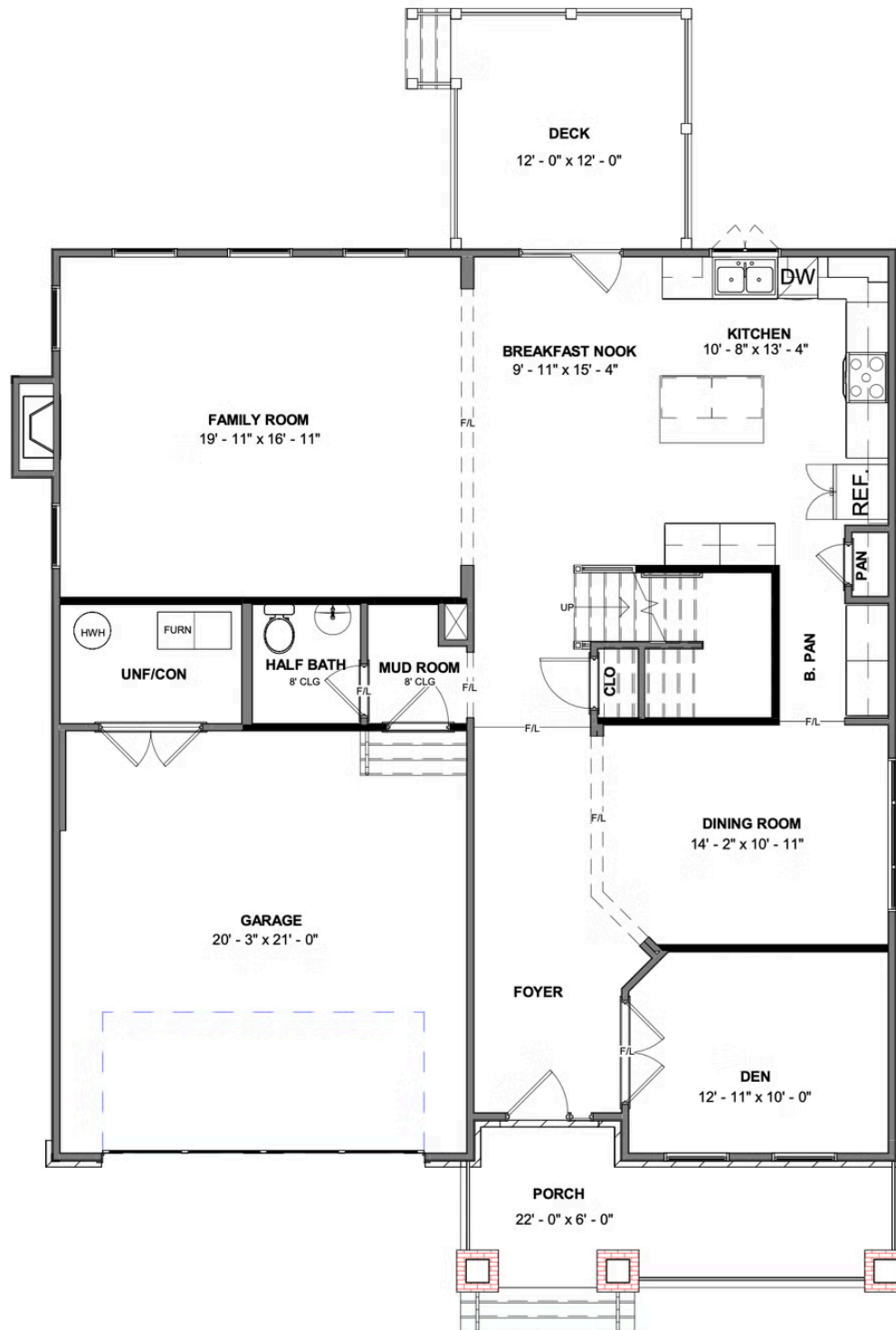
eagleofva.com

1960 Kyles Way

AT THE PRESERVE SINGLE FAMILY HOMES



FIRST FLOOR



eagleofva.com

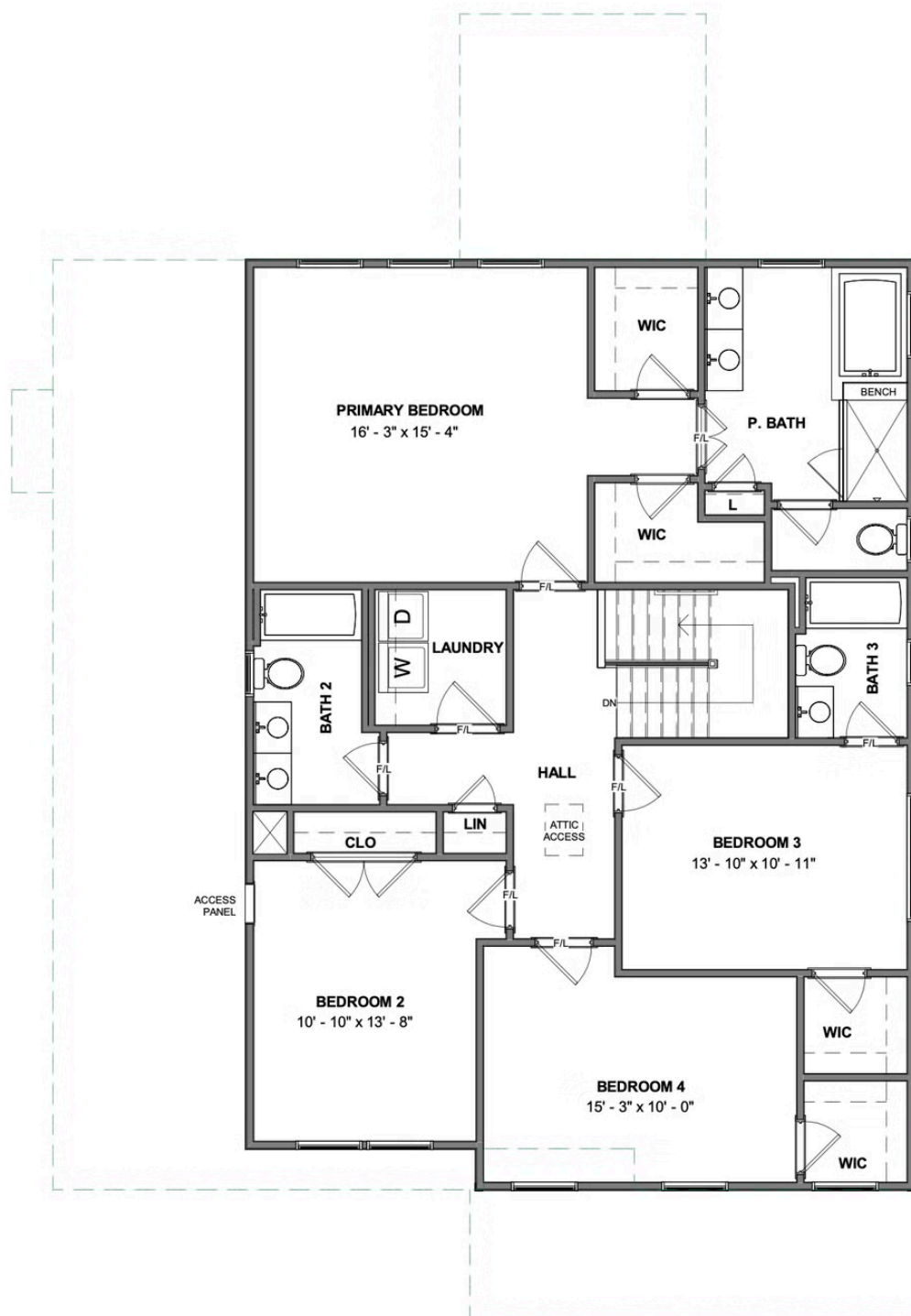
This information is deemed reliable but not guaranteed. All details, dimensions, square footage, illustrations and pricing are approximate and may vary from actual plans and specifications. Contact an Eagle Sales Consultant for details. Current information as of 22nd January 2026

1960 Kyles Way

AT THE PRESERVE SINGLE FAMILY HOMES



SECOND FLOOR



eagleofva.com