





1785 Kyles Way

AT THE PRESERVE SINGLE FAMILY HOMES



-  4 Bedrooms
-  3.5 Bathrooms
-  2842 Square Feet
-  2 Car Garage

\$653,966



Southern hospitality meets modern sensibilities with the Savannah, a 2-story plan offering 4 bedrooms, 2.5 baths, a 2-car garage and over 2,800 square feet of tranquility ready for personalization. Step into the foyer and ambiance of home as a front study and dining room greet you with open arms. Unleash your inner chef in a dream kitchen with acres of cabinets and large island offering scenic views of the breakfast nook and family room beyond. Let the good life begin—and continue upstairs in a primary suite that caters to your every need with its luxurious dual-sink bath, enlarged shower with bench seat and double walk-in closets. 3 additional bedrooms, a full bath, and convenient second floor laundry ensure plenty of space for one and all.

Features of this Home

- Enlarged Primary shower with bench seat
- Interior chase fireplace in Family Room
- 16'x10' deck
- HD Video Package above fireplace
- Convection gas range in Kitchen
- Hardwood laminated flooring in main living areas
- Hardwood stairs

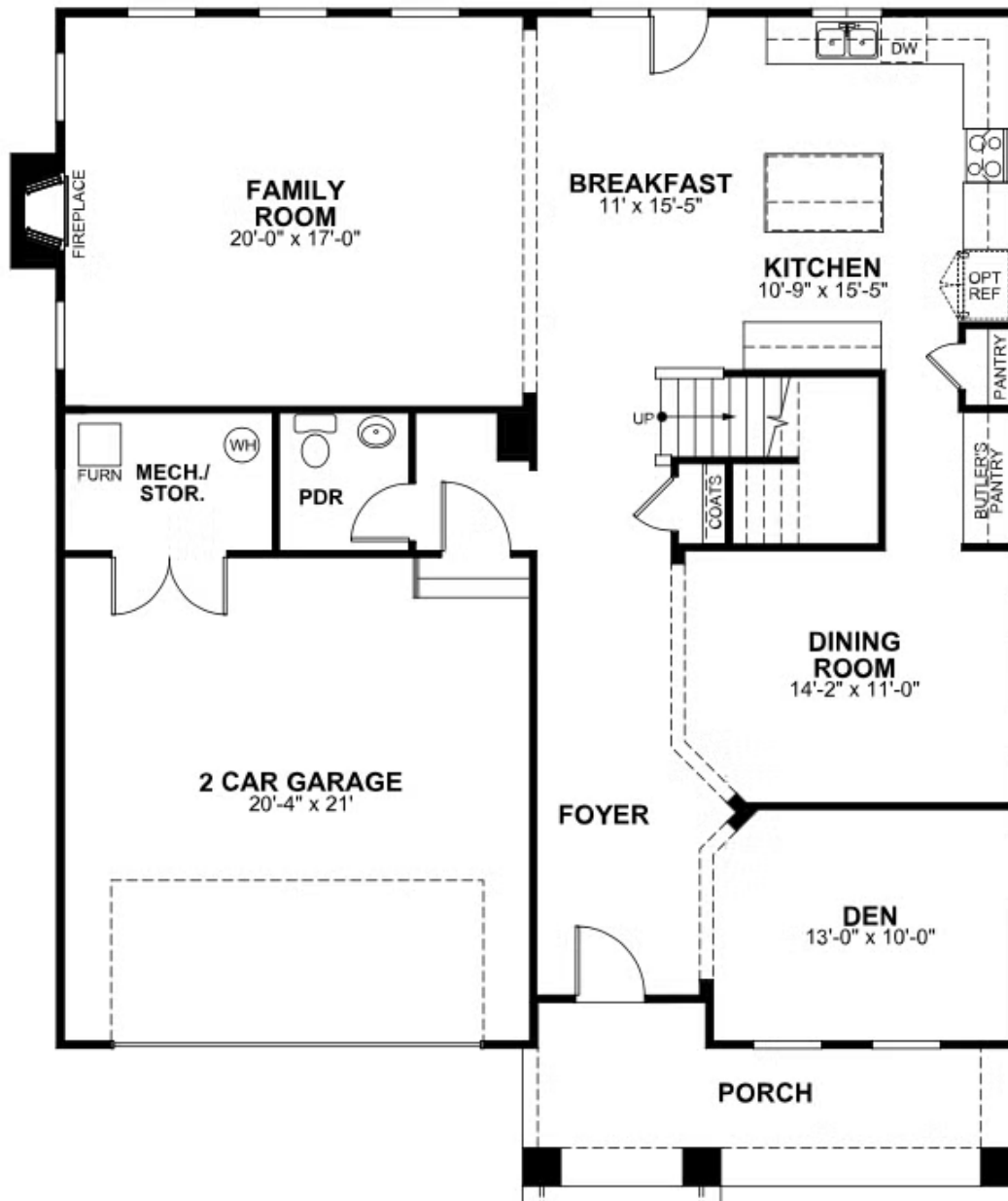
eagleofva.com

1785 Kyles Way

AT THE PRESERVE SINGLE FAMILY HOMES



FIRST FLOOR



eagleofva.com

SECOND FLOOR

