





# 1765 Kyles Way

AT THE PRESERVE SINGLE FAMILY HOMES



-  4 Bedrooms
-  3.5 Bathrooms
-  2842 Square Feet
-  2 Car Garage

**\$659,974**



Southern hospitality meets modern sensibilities with the Savannah, a 2-story plan offering 4 bedrooms, 2.5+ baths, a 2-car garage and over 2,800 square feet of tranquility ready for personalization. Step into the foyer and ambiance of home as a front study and dining room greet you with open arms. Unleash your inner chef in a dream kitchen with acres of cabinets and large island offering scenic views of the breakfast nook and family room beyond. Let the good life begin—and continue upstairs in a primary suite that caters to your every need with its luxurious dual-sink bath and double walk-in closets. 3 additional bedrooms, 2 full baths, and convenient second floor laundry ensure plenty of space for one and all.

## Features of this Home

- Hardwood Stairs
- Fireplace in Family Room
- Gas Range in Kitchen
- HD Video Package above Fireplace
- Hardwood Laminate Flooring Throughout Entire First Floor
- LED Recessed Lighting Package in Family Room and Primary Bedroom
- Tall Crawl Space on Basement Homesite

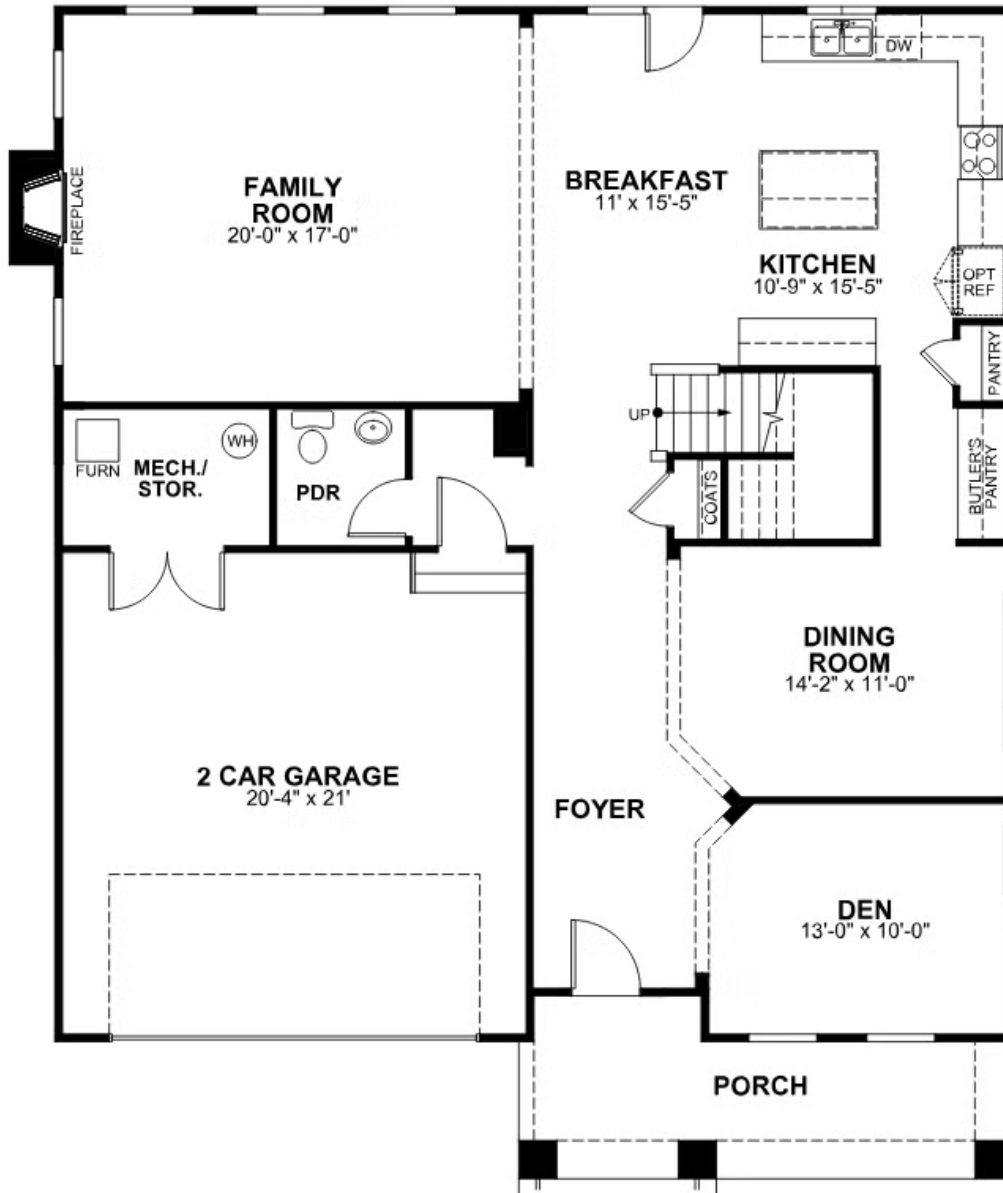
[eagleofva.com](http://eagleofva.com)

# 1765 Kyles Way

AT THE PRESERVE SINGLE FAMILY HOMES



## FIRST FLOOR



eagleofva.com

This information is deemed reliable but not guaranteed. All details, dimensions, square footage, illustrations and pricing are approximate and may vary from actual plans and specifications. Contact an Eagle Sales Consultant for details. Current information as of 17th May 2024

## SECOND FLOOR

