





1765 Kyles Way

AT THE PRESERVE SINGLE FAMILY HOMES



-  4 Bedrooms
-  3.5 Bathrooms
-  2850 Square Feet
-  2 Car Garage

\$639,900



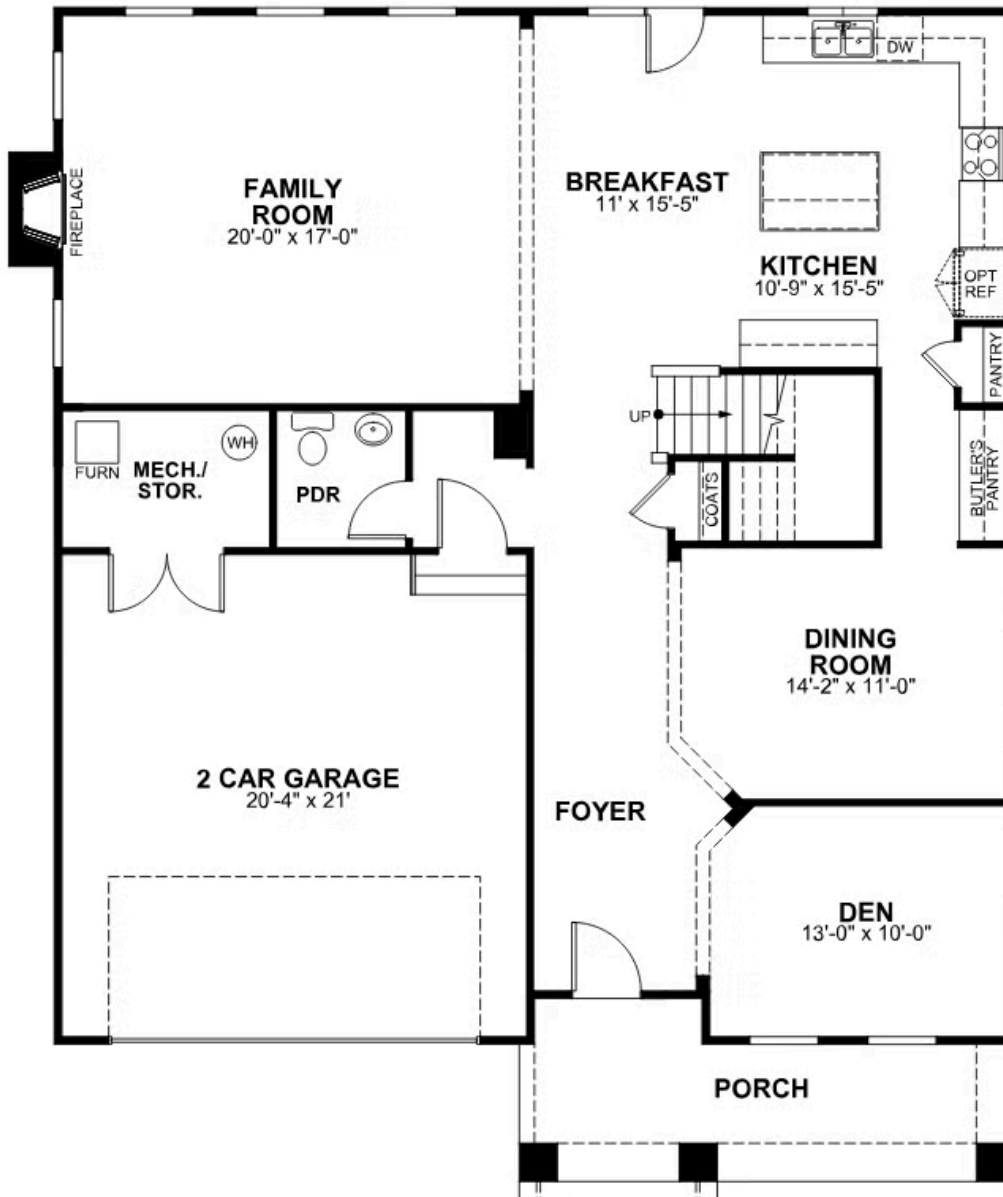
MOVE-IN READY! Southern hospitality meets modern sensibilities with the Savannah, a 2-story plan offering 4 bedrooms, 2.5+ baths, a 2-car garage and over 2,800 square feet of tranquility ready for personalization. Step into the foyer and ambiance of home as a front study and dining room greet you with open arms. Unleash your inner chef in a dream kitchen with acres of cabinets and large island offering scenic views of the breakfast nook and family room beyond. Let the good life begin—and continue upstairs in a primary suite that caters to your every need with its luxurious dual-sink bath and double walk-in closets. 3 additional bedrooms, 2 full baths, and convenient second floor laundry ensure plenty of space for one and all.

Features of this Home

- Hardwood Stairs
- Fireplace in Family Room
- Gas Range in Kitchen
- HD Video Package above Fireplace
- Hardwood Laminate Flooring Throughout Entire First Floor
- LED Recessed Lighting Package in Family Room and Primary Bedroom

eagleofva.com

FIRST FLOOR



SECOND FLOOR

