





# 1751 Kyles Way

AT THE PRESERVE SINGLE FAMILY HOMES



-  4 Bedrooms
-  2.5 Bathrooms
-  2674 Square Feet
-  2 Car Garage

**\$666,493**



**MOVE-IN READY!** Smart, stately, and dressed to impress, the Bradford is a new 2-story plan with 4 bedrooms, 2.5+ baths, a back deck, and over 2,600 square feet of gracious modern living. Step from front porch to foyer and into a feeling of home as fresh as the mountain air. A front study and formal dining room greet guests like proper hosts, inviting all to a vast panoramic roomscape where the smells of home cooking blend with the love of family and laughter of gatherings that go well past bedtime. As the night ends, head upstairs to your majestic primary suite with its epic dual-sink bath and linen closet, and a walk-in as big as the great outdoors. 3 additional bedrooms with walk-in closets, a full dual-sink bath, and second floor laundry ensure you never be lacking for space to stretch and room to grow.

## Features of this Home

- Tall crawl space on basement homesite
- Serenity primary bathroom with enlarged shower and bench seat
- Hardwood stairs
- Fireplace with black granite surround in family room
- Luxury quartz countertops in kitchen
- Hardwood laminate flooring on entire first floor
- Beautiful ceramic tile in primary and secondary bathroom
- Convection gas range
- HD video package above fireplace
- LED recessed lights package with dimmer switch in kitchen and primary bedroom

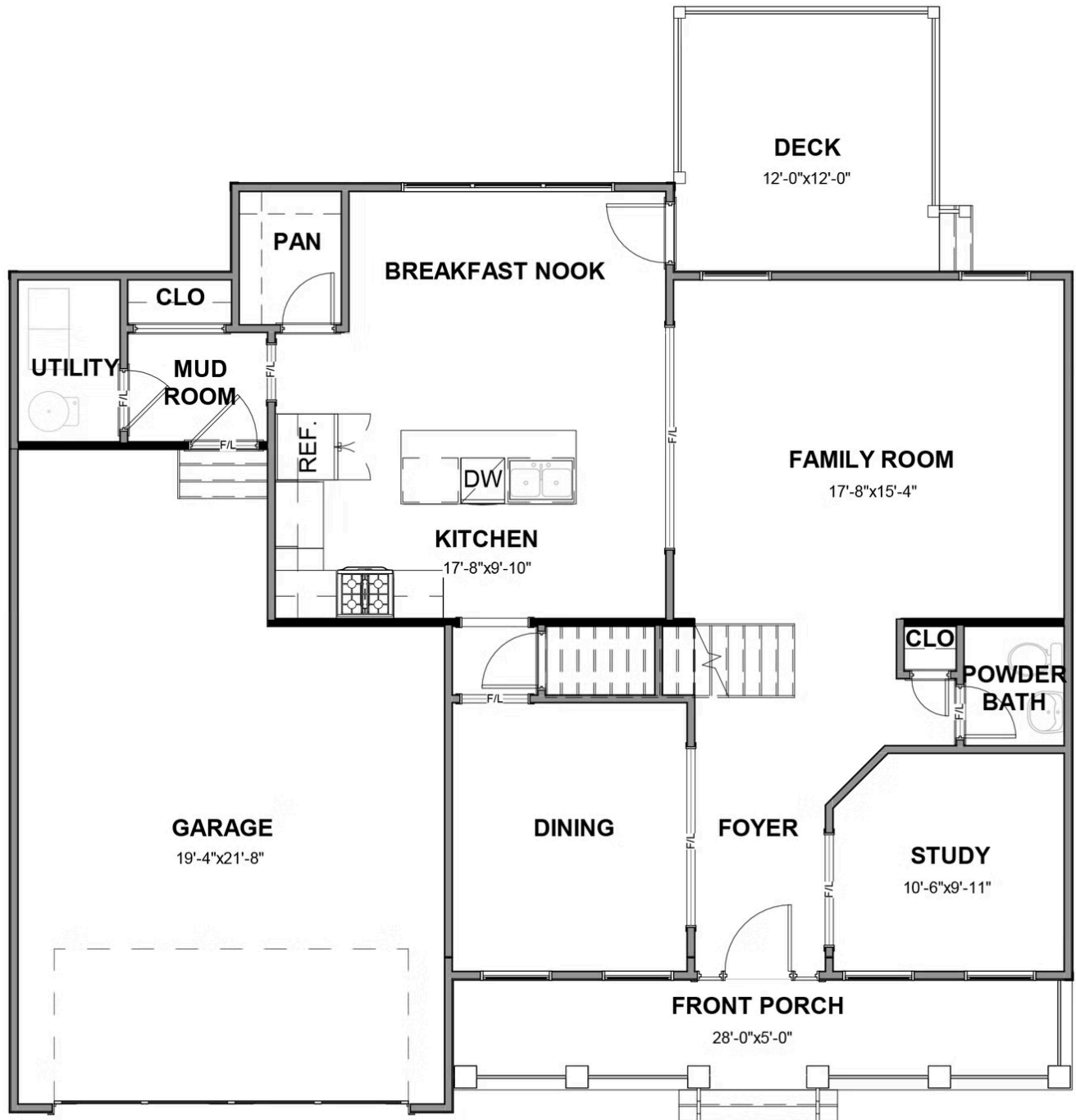
[eagleofva.com](http://eagleofva.com)

# 1751 Kyles Way

AT THE PRESERVE SINGLE FAMILY HOMES



## FIRST FLOOR



eagleofva.com

This information is deemed reliable but not guaranteed. All details, dimensions, square footage, illustrations and pricing are approximate and may vary from actual plans and specifications. Contact an Eagle Sales Consultant for details. Current information as of 3rd July 2025

## SECOND FLOOR

