





# 1731 Kyles Way

AT THE PRESERVE SINGLE FAMILY HOMES



-  3 Bedrooms
-  2.5 Bathrooms
-  2519 Square Feet
-  2 Car Garage

**\$659,900**



**Brand new floor plan!** The Pearl Terrace offers the perfect blend of comfort and functionality, catering to modern living with both style and ease. The main level features a spacious family room, a gourmet kitchen with breakfast nook that opens to a deck, and a formal dining room.

The secluded first floor primary suite includes a walk-in closet and private bath, while a convenient laundry room and half bath finish out the main level. The terrace (basement) level adds two cozy bedrooms, a full bath, and generous unfinished storage areas. A rec room is added for more room to spread out while entertaining or relaxing. And an attached 2-car garage gives you even more space.

## Features of this Home

- Expanded Rec Room in Basement
- Fireplace in Family Room
- Serenity Bath in Primary Suite

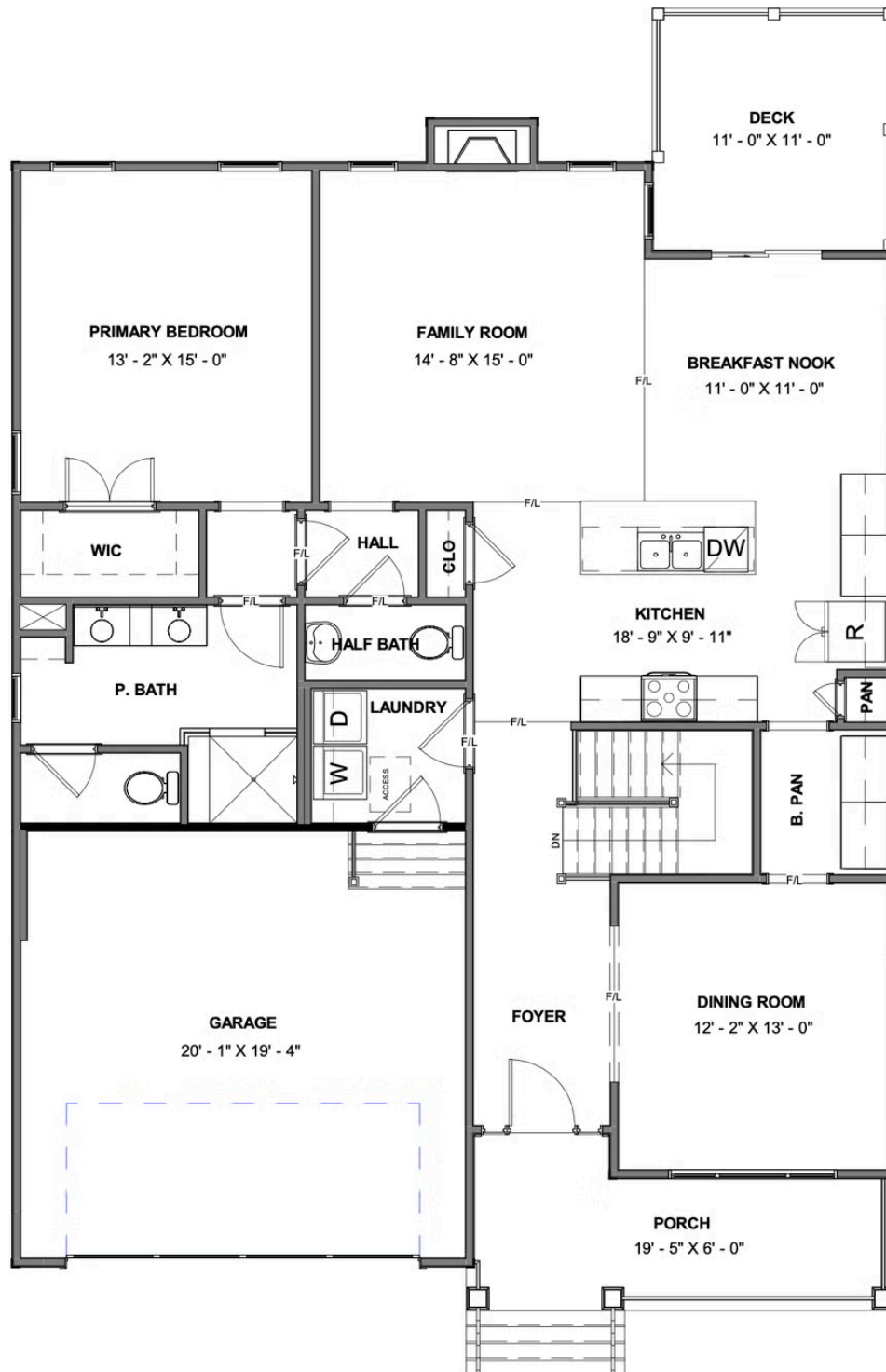
[eagleofva.com](http://eagleofva.com)

# 1731 Kyles Way

AT THE PRESERVE SINGLE FAMILY HOMES



## MAIN LEVEL



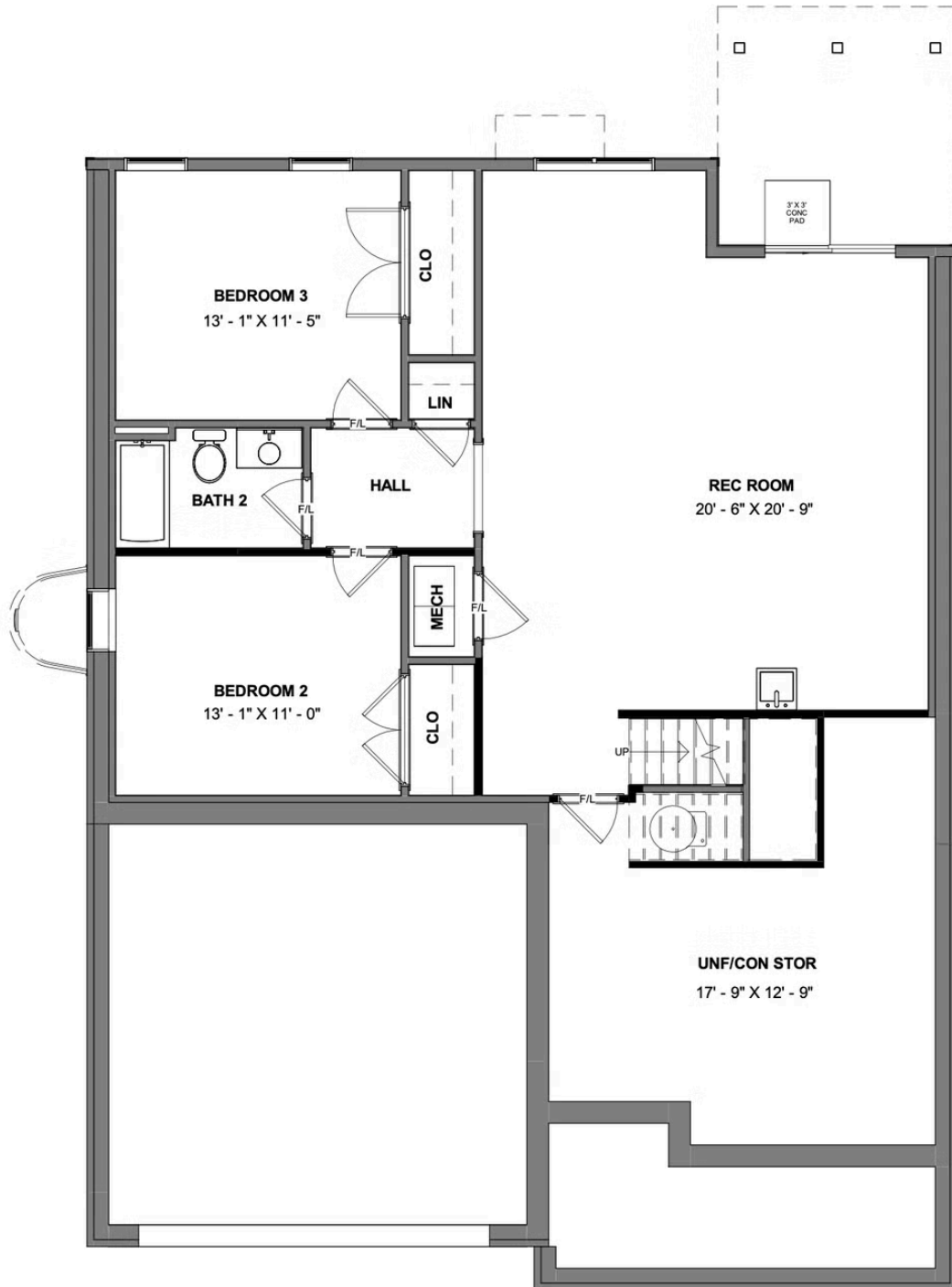
eagleofva.com

# 1731 Kyles Way

AT THE PRESERVE SINGLE FAMILY HOMES



## TERRACE LEVEL



eagleofva.com