






-  4 - 5 Bedrooms
-  3.5 Bathrooms
-  3,508 Square Feet
-  2 Car Garage
-  4 Levels



The Westmoreland is a 4-story luxury townhome with plenty of opportunity to personalize so that this new home floor plan fits your lifestyle. On the first floor, you will find your rear load 2-car garage, as well as a large rec room and half bath that can be converted to a bedroom or full bath if you prefer. Head up to the second floor where you will find a spacious family room that flows into the Kitchen and the formal Dining Room. There is also a pocket office adjacent to the family room, as well as a spacious deck. The third floor features a lot of opportunities for personalization to fit your needs. There are multiple different configurations for 3 bedrooms, dual Master Suites, and Owner's Suites! This floor also has a large laundry room. The fourth floor will quickly become your favorite, featuring a large media room that leads out to your huge covered rooftop terrace, making this space perfect for entertaining or enjoying a relaxing evening. Add a fireplace to your terrace and you will be able to enjoy all year long! The fourth floor also features an additional bedroom and full bath. You can add an elevator if you desire for even more convenience.

## Features of this Floorplan

- Covered terrace with opportunity for NanaWall and/or brick fireplace
- Large media room
- First floor rec room with multiple configurations
- Butler's pantry
- Multiple primary bedroom and bath layouts

# THE Westmoreland

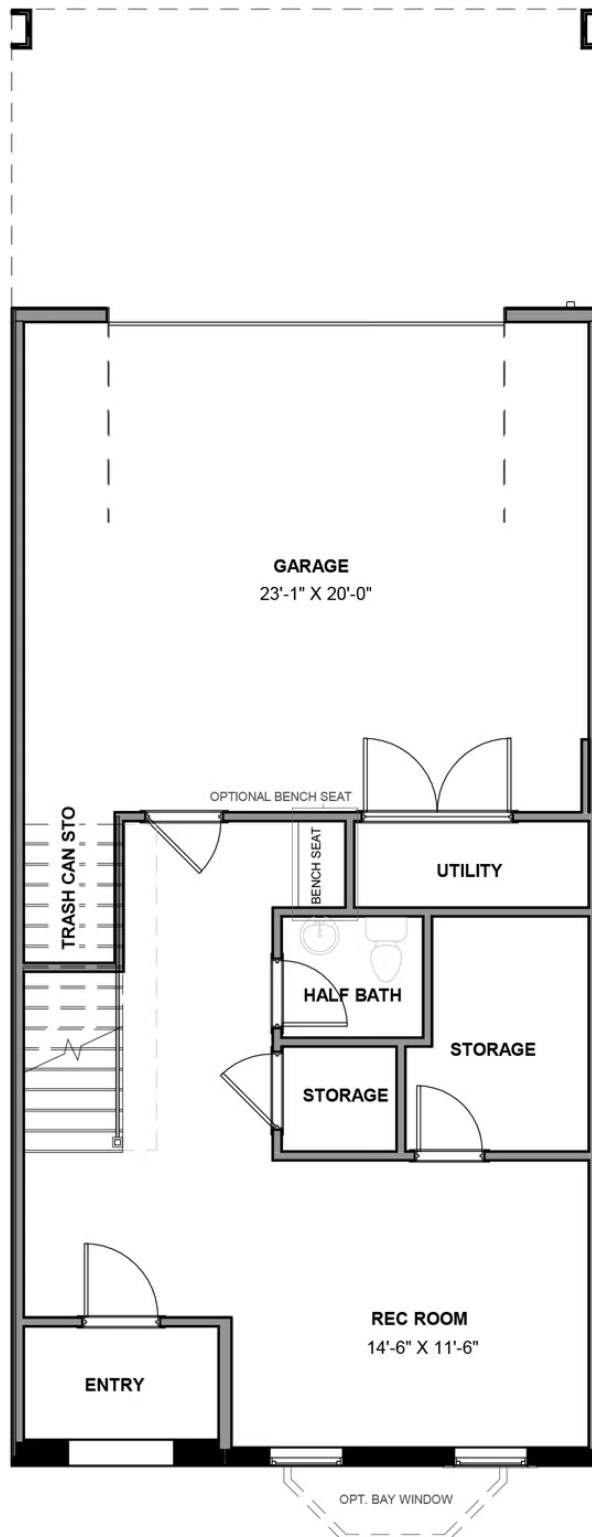
AT MIDTOWN



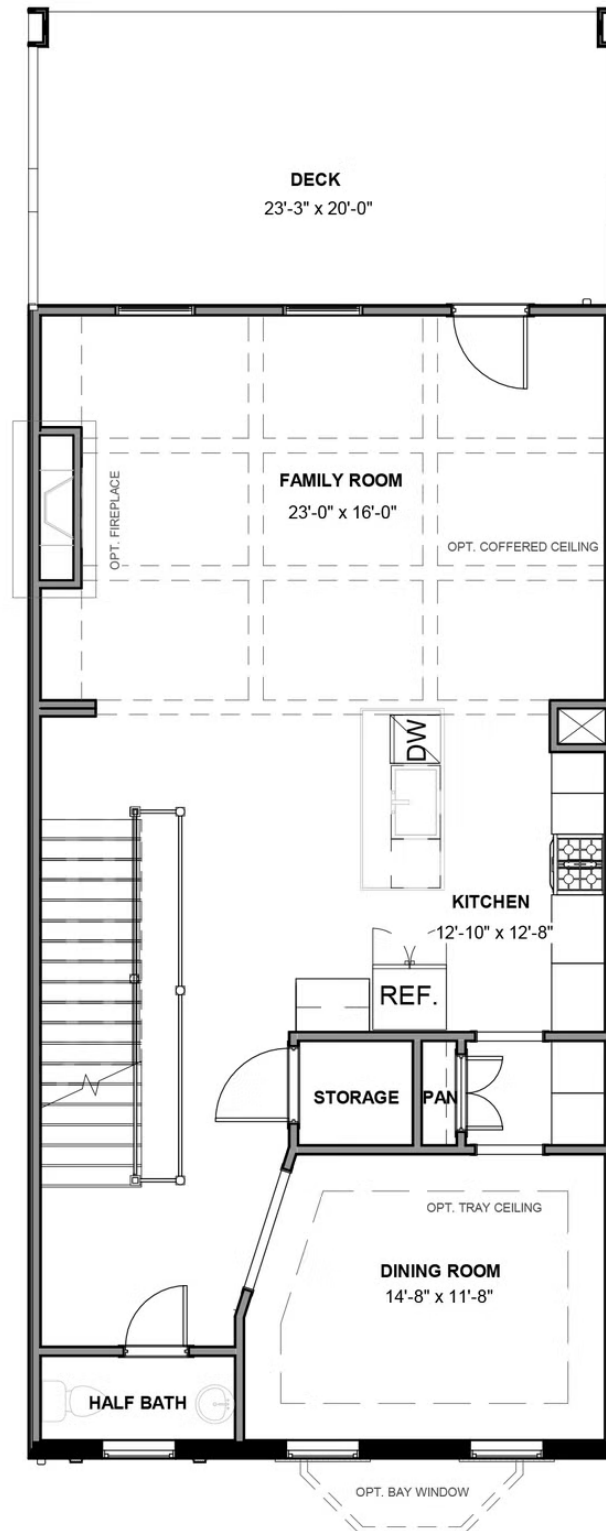
[eagleofva.com](http://eagleofva.com)

This information is deemed reliable but not guaranteed. All details, dimensions, square footage, illustrations and pricing are approximate and may vary from actual plans and specifications. Contact an Eagle Sales Consultant for details. Current information as of 25th April 2024

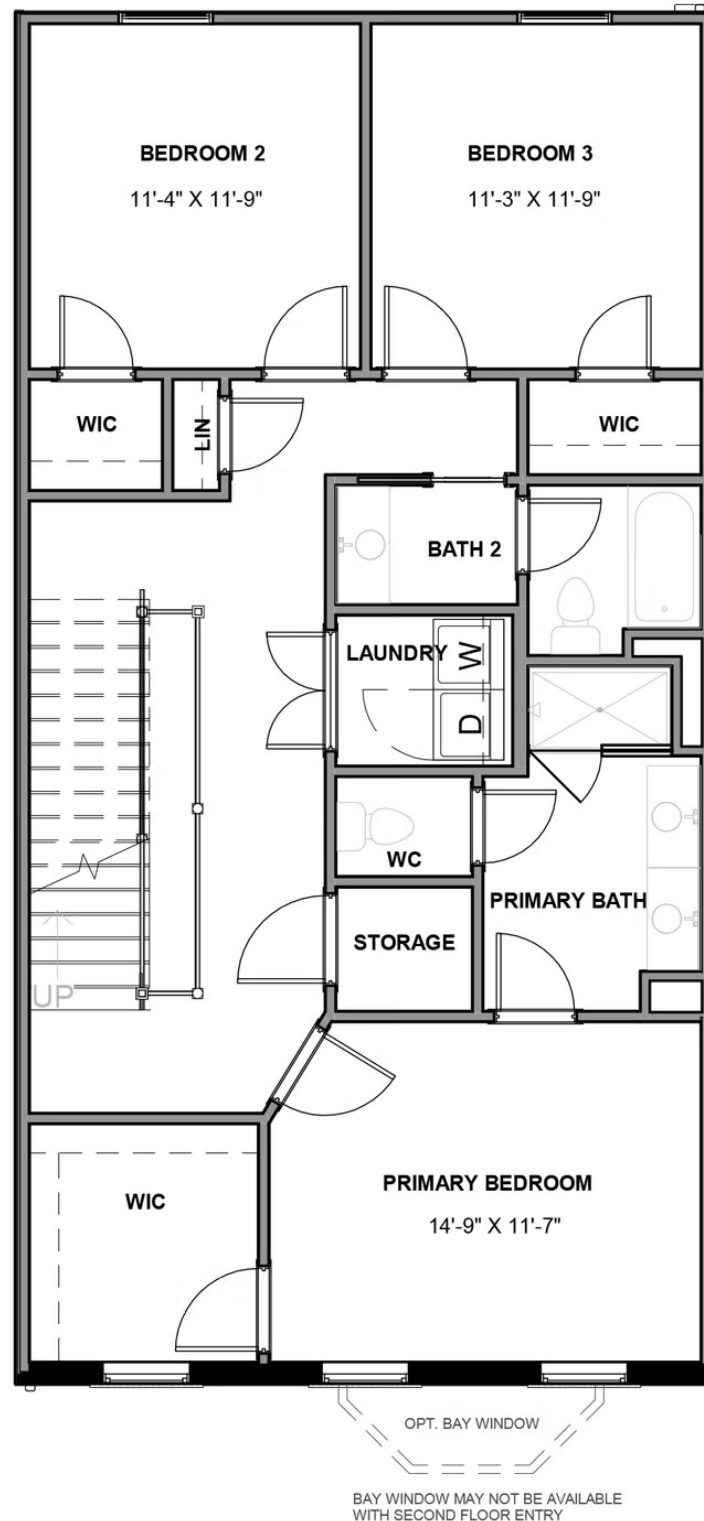
FIRST FLOOR



**SECOND FLOOR**



THIRD FLOOR



FOURTH FLOOR

