





535 Belvedere Avenue

AT MIDTOWN



-  4 Bedrooms
-  4.5 Bathrooms
-  2894 Square Feet
-  2 Car Garage

\$1,003,549



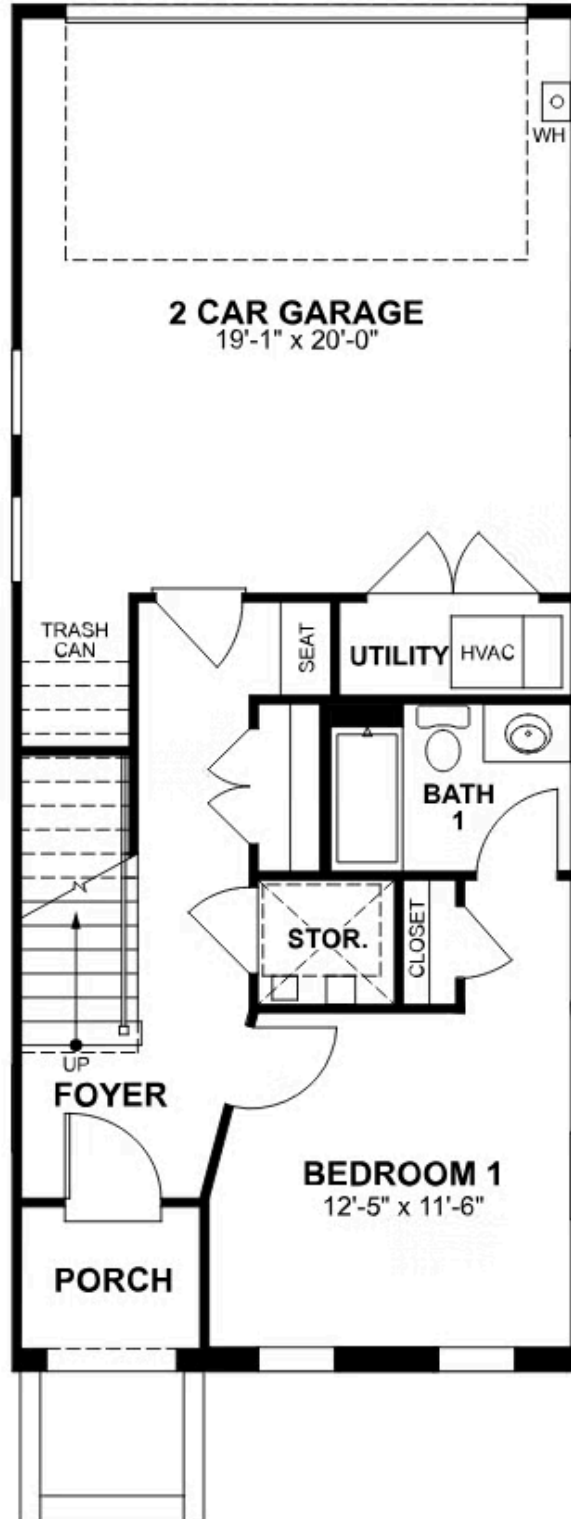
Move up—and over—to deluxe with the Rowland. This spacious 4-story end unit townhome blends exquisite craftsmanship, exacting detail, and a flair for modern urban living—all with the 'side benefits' of additional windows offering more natural light and views. Arrive home to your private 2-car garage and step into the ground floor foyer with convenient bedroom and full bath. The second level is first class when it comes to relaxing and entertaining, with its masterful flow from dining room to kitchen to family room, and further outward to a large welcoming deck. Move up to the third floor and the comforts of your primary suite with its dual-sink bath and generous walk-in closet. A second bedroom and full bath, as well as laundry also call this floor home. And there's more to go! Step up to the fourth floor and into a large media room offering access to an amazing terrace with fireplace. A third bedroom and full bath completes the top floor. Ready for personalization from top to bottom, you can even add an elevator for enhanced convenience—and wow-factor!

Features of this Home

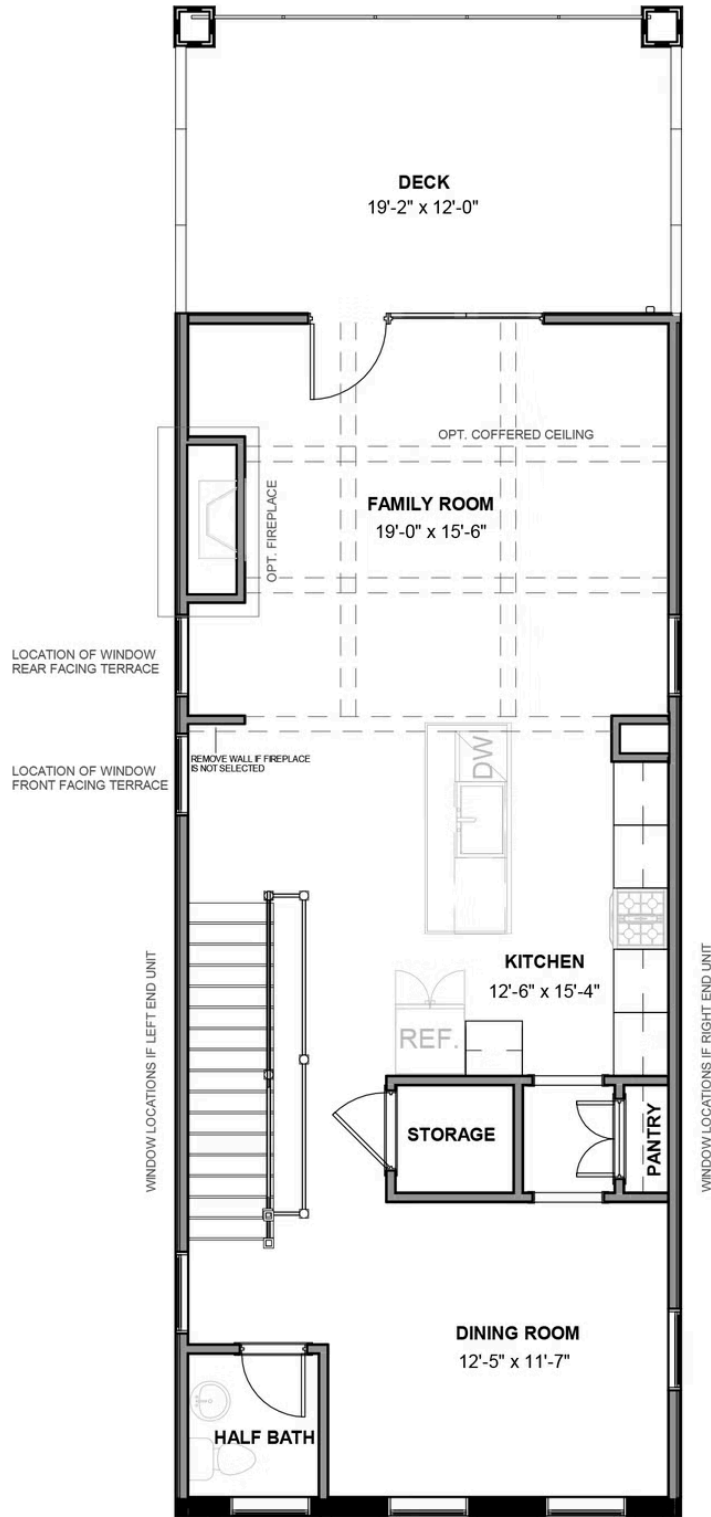
- 4th Floor Media Room with NanaWall to Covered Terrace with Fireplace
- Ultimate Primary Bath
- Gas Fireplace in Family Room

eagleofva.com

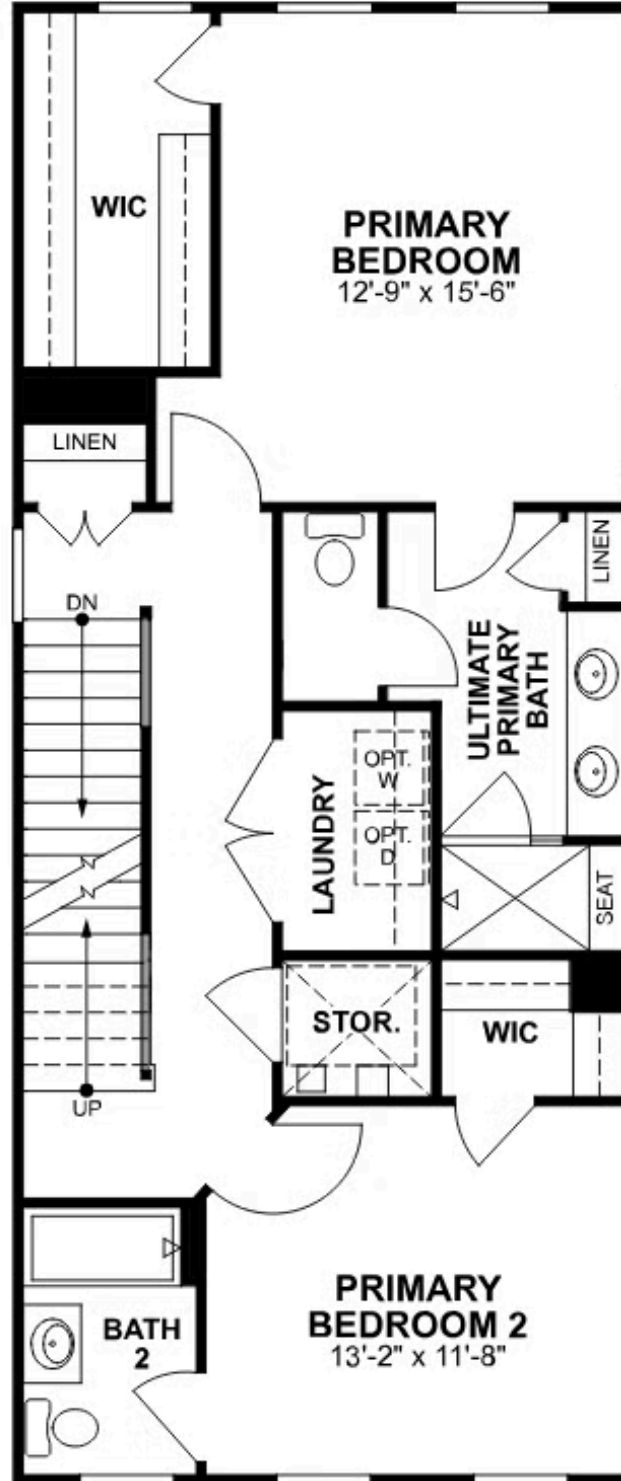
FIRST FLOOR



SECOND FLOOR



THIRD FLOOR



FOURTH FLOOR

