





533 Belvedere Avenue

AT MIDTOWN



-  4 Bedrooms
-  4.5 Bathrooms
-  3602 Square Feet
-  2 Car Garage

\$1,018,265



The Westmoreland is a 4-story luxury townhome with plenty of opportunity to personalize so that this new home floor plan fits your lifestyle. On the first floor, you will find your rear load 2-car garage, as well as a convenient first floor bedroom and full bath. Head up to the second floor where you will find a spacious family room that flows into the Kitchen and the formal Dining Room. There is also a spacious deck with beautiful Blacksburg views. The third floor features dual Primary Suites, and a laundry room. The fourth floor will quickly become your favorite, featuring a large media room that leads out to your huge covered rooftop terrace, making this space perfect for entertaining or enjoying a relaxing evening. Complete with a fireplace so you will be able to enjoy all year long! The fourth floor also features an additional bedroom and full bath. You can add an elevator if you desire for even more convenience.

Features of this Home

- Ultimate Shower
- 4th Floor Media Room
- Rear Covered Terrace with Fireplace
- Gas Fireplace in Family Room

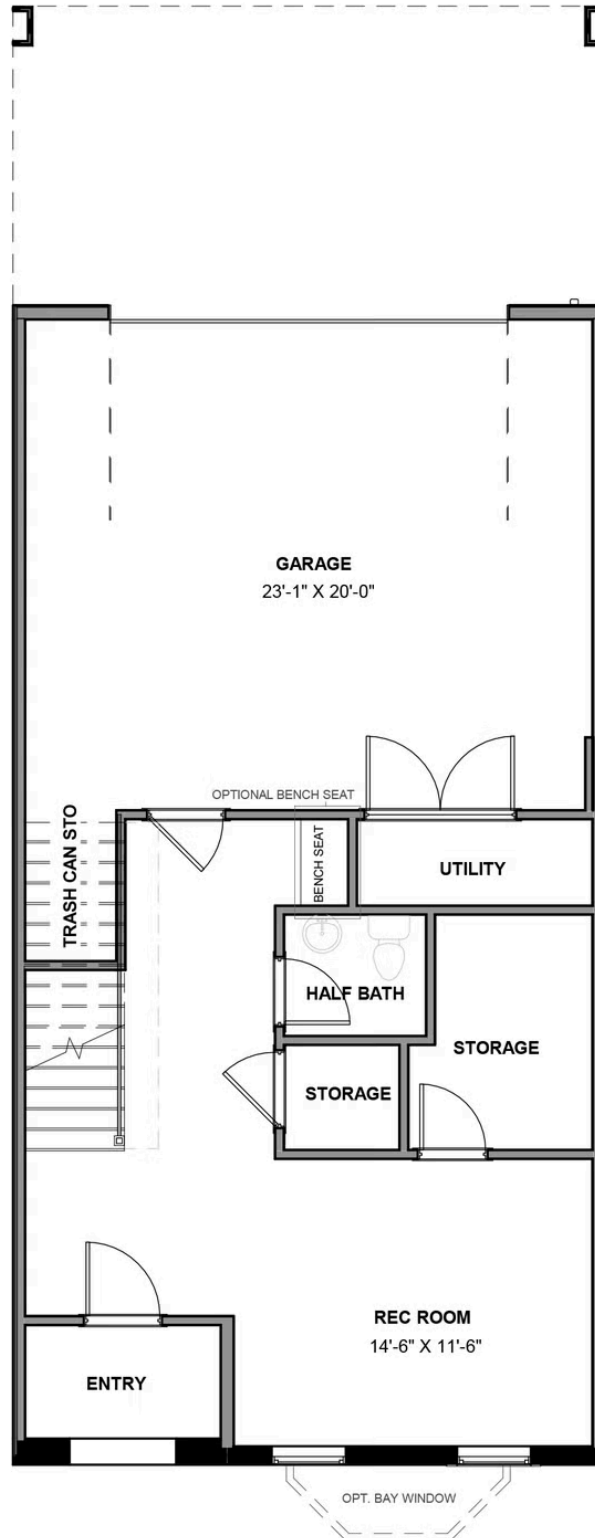
eagleofva.com

533 Belvedere Avenue

AT MIDTOWN

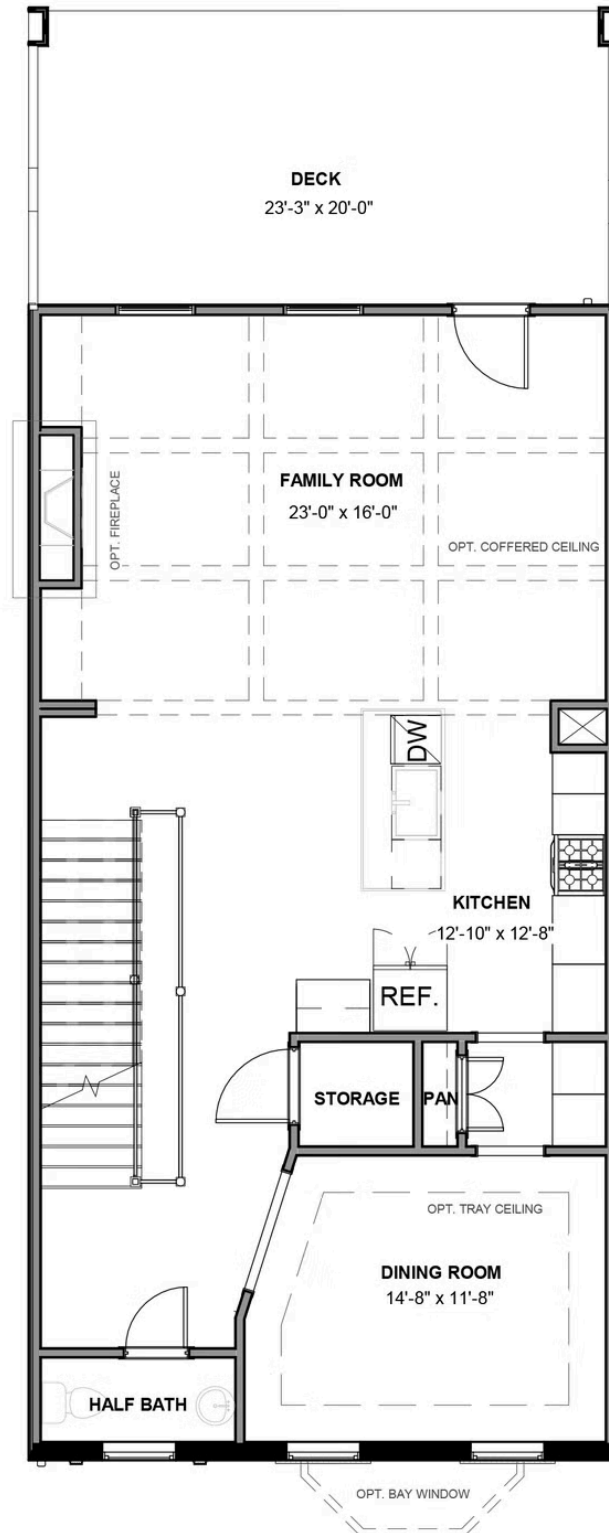


FIRST FLOOR

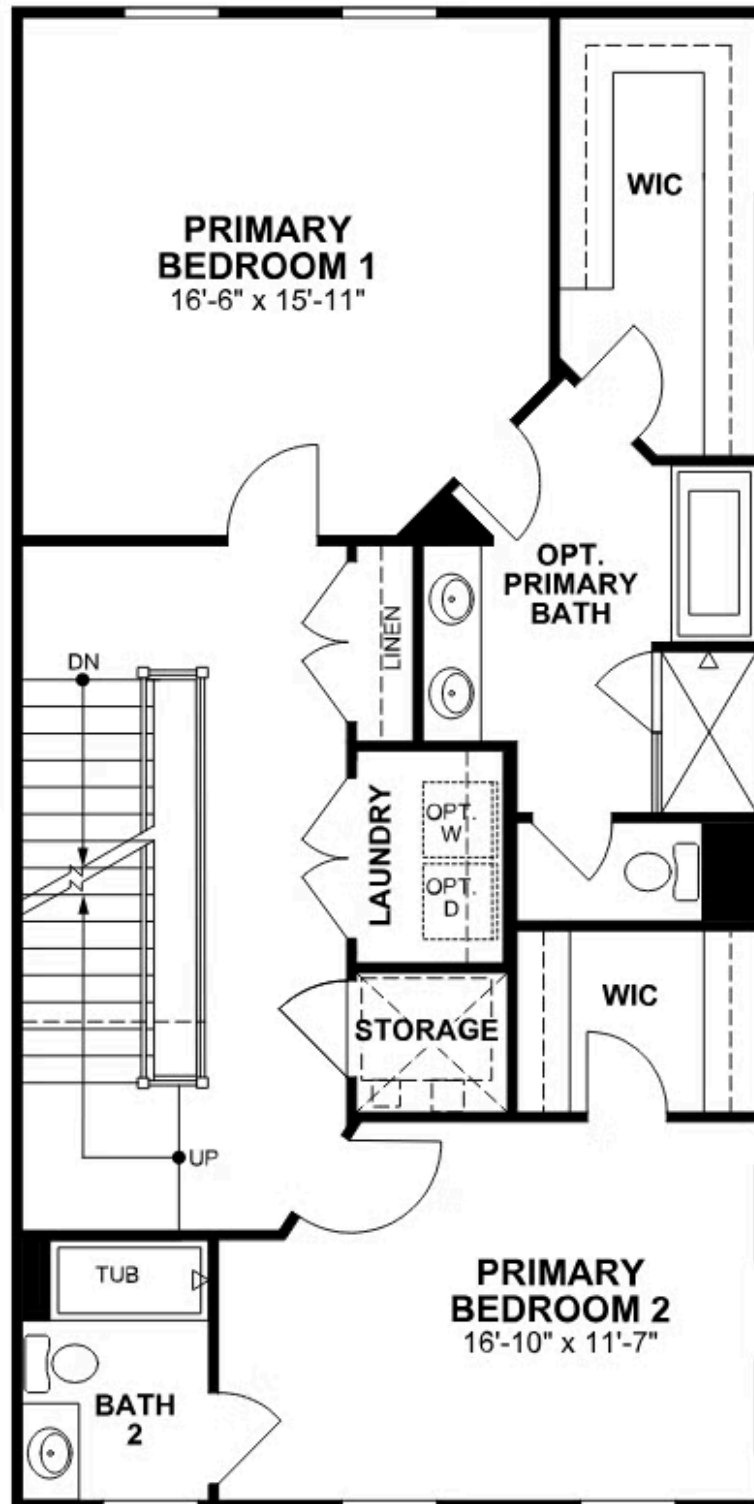


eagleofva.com

SECOND FLOOR



THIRD FLOOR



FOURTH FLOOR

