





525 Belvedere Avenue

AT MIDTOWN



-  3 Bedrooms
-  2.5 Bathrooms
-  2487 Square Feet
-  1 Car Garage

\$684,900



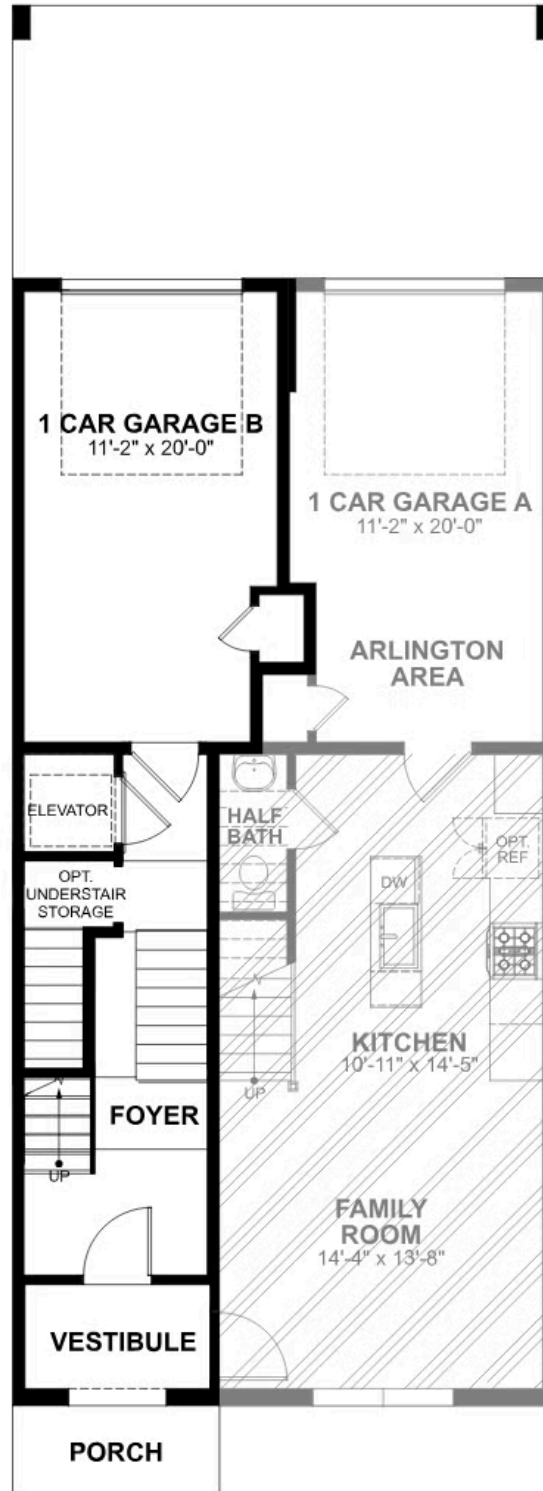
Designed for today's lifestyles and personalized to yours, the McKinney is a 2-level, 3-bedroom condo offering over 2,400 square feet of space. Consisting of the third and fourth floor of the townhouse, the McKinney offers everything you could imagine in modern urban living with walkable access to lively local markets, shops, and restaurants. Pull-in to your private, 1-car garage and step into the foyer, where your personal elevator awaits to whisk you to the third floor landing (first floor of your home). Here you'll find the primary suite complete with dual-sink bath and generous walk-in closet, as well as two additional bedrooms, full bath, and laundry. Step up to the fourth floor (second floor of your home) and bask in the airy openness and seamless flow of kitchen, dining, and family room—leading to the covered terrace with fireplace perfect for entertaining or making any moment cozy.

Features of this Home

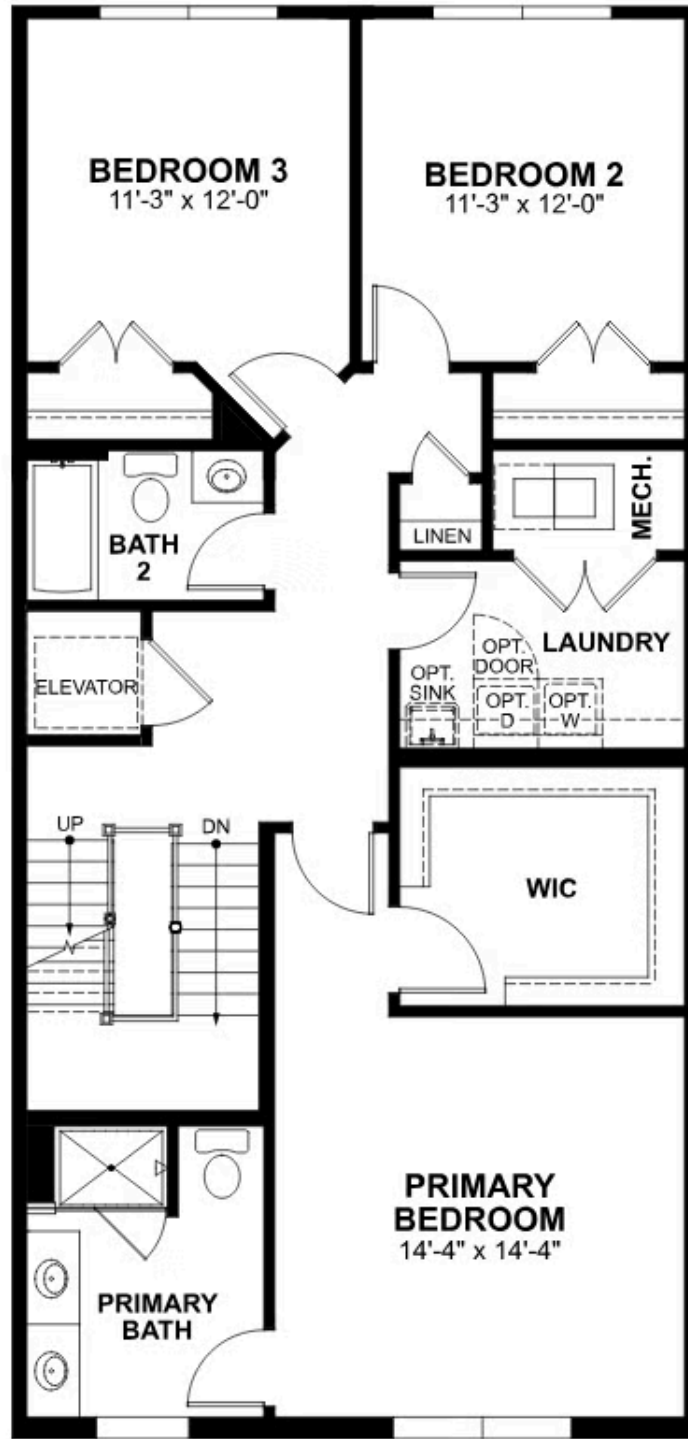
- Fireplace on Terrace
- Ceramic Tile Shower with Bench Seat in Primary Bath

eagleofva.com

FIRST FLOOR



THIRD FLOOR



FOURTH FLOOR

