





523 Belvedere Avenue

AT MIDTOWN



-  3 Bedrooms
-  2.5 Bathrooms
-  1504 Square Feet
-  1 Car Garage

\$533,020



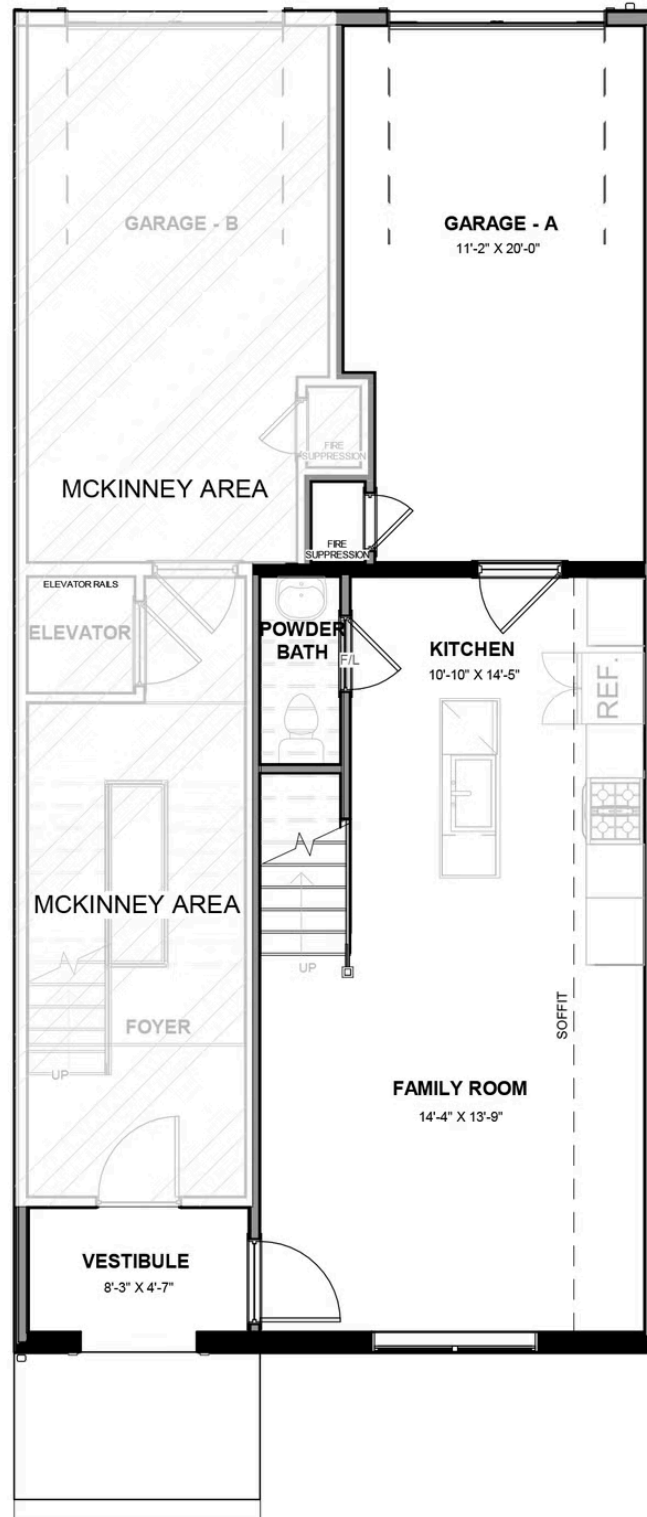
Welcome to modern urban living like never before with the Arlington, a 2-level, 3-bedroom condo offering 1,504 square feet of space. Arrive home to your private 1-car garage and step into a true chef's kitchen and open living room ready for relaxing or entertaining. A half-bath powder room completes the first floor. Step up the open stairwell to the second floor where your primary suite awaits with dual-sink bath and generous walk-in closet. Here you'll also find an additional two bedrooms, full bath, laundry, and a rear outside deck ready for kicking back and soaking up the good life.

Features of this Home

- 3 Bedrooms on 2nd Floor
- Ceramic Tile Shower with Bench Seat in Primary Bath

eagleofva.com

FIRST FLOOR



SECOND FLOOR

