





513 Belvedere Avenue

AT MIDTOWN



-  4 Bedrooms
-  4.5 Bathrooms
-  3508 Square Feet
-  2 Car Garage

\$1,036,033



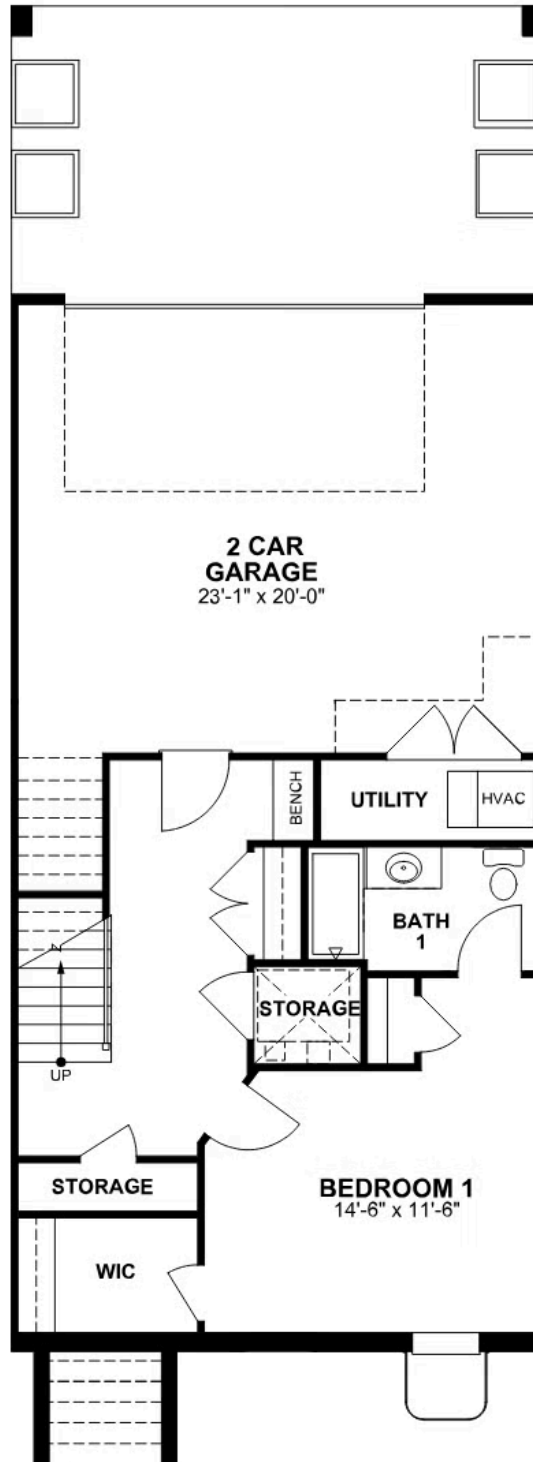
The Westmoreland is a 4-story luxury townhome with plenty of opportunity to personalize so that this new home floor plan fits your lifestyle. On the first floor, you will find your rear load 2-car garage, as well as a bedroom and full bath. Head up to the second floor where you will find a spacious family room that flows into the Kitchen and the formal Dining Room. There is also a pocket office adjacent to the family room, as well as a spacious deck. The third floor features Dual Primary Suites! This floor also has a large laundry room. The fourth floor will quickly become your favorite, featuring a large media room that leads out to your huge covered rooftop terrace, making this space perfect for entertaining or enjoying a relaxing evening. And with a fireplace to your terrace, you will be able to enjoy all year long! The fourth floor also features an additional bedroom and full bath.

Features of this Home

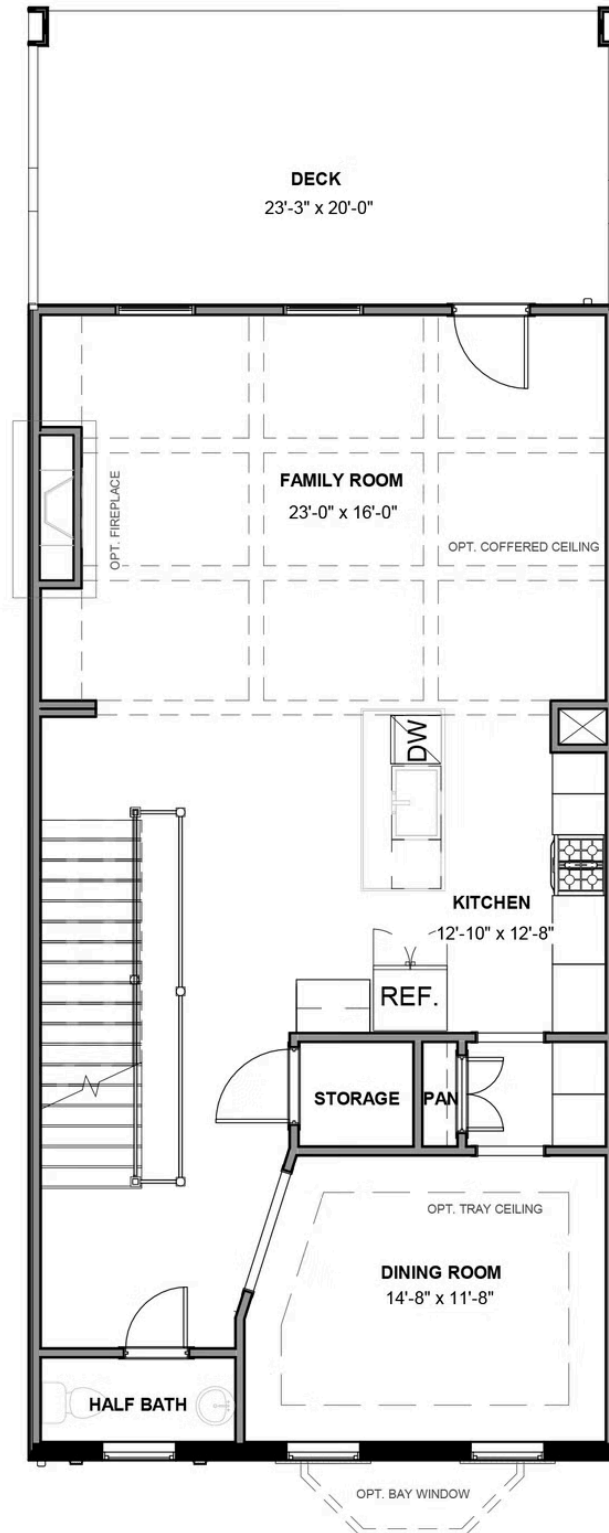
- First Floor Bedroom with Full Bath
- Gas Fireplace in Family Room
- Dual Primary Suites with Ultimate Primary Bath
- Fireplace on Covered Terrace

eagleofva.com

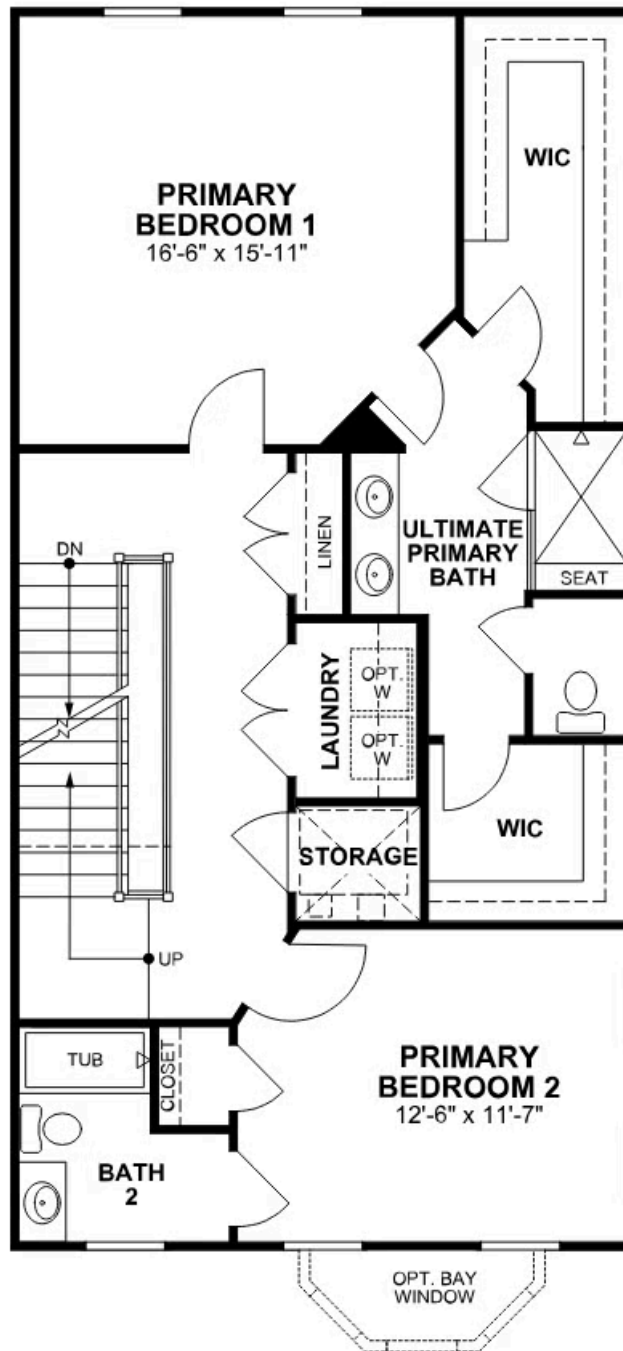
FIRST FLOOR



SECOND FLOOR



THIRD FLOOR



FOURTH FLOOR

