





426 Midtown Way

AT MIDTOWN



-  2 Bedrooms
-  2.5 Bathrooms
-  2487 Square Feet
-  1 Car Garage

\$711,653



Designed for today's lifestyles and personalized to yours, the McKinney is a 2-level, 2-bedroom condo offering over 2,400 square feet of space. Consisting of the third and fourth floor of the townhouse, the McKinney offers everything you could imagine in modern urban living with walkable access to lively local markets, shops, and restaurants. Pull-in to your private, 1-car garage and step into the foyer, where your personal elevator awaits to whisk you to the third floor landing (first floor of your home). Here you'll find the primary suite complete with dual-sink bath and generous walk-in closet, as well as an additional bedroom, full bath, laundry and flexible loft space. Step up to the fourth floor (second floor of your home) and bask in the airy openness and seamless flow of kitchen, dining, and family room—leading to the covered terrace with optional fireplace perfect for entertaining or making any moment cozy. Pets are welcome

eagleofva.com

This information is deemed reliable but not guaranteed. All details, dimensions, square footage, illustrations and pricing are approximate and may vary from actual plans and specifications. Contact an Eagle Sales Consultant for details. Current information as of 25th April 2025

426 Midtown Way

AT MIDTOWN

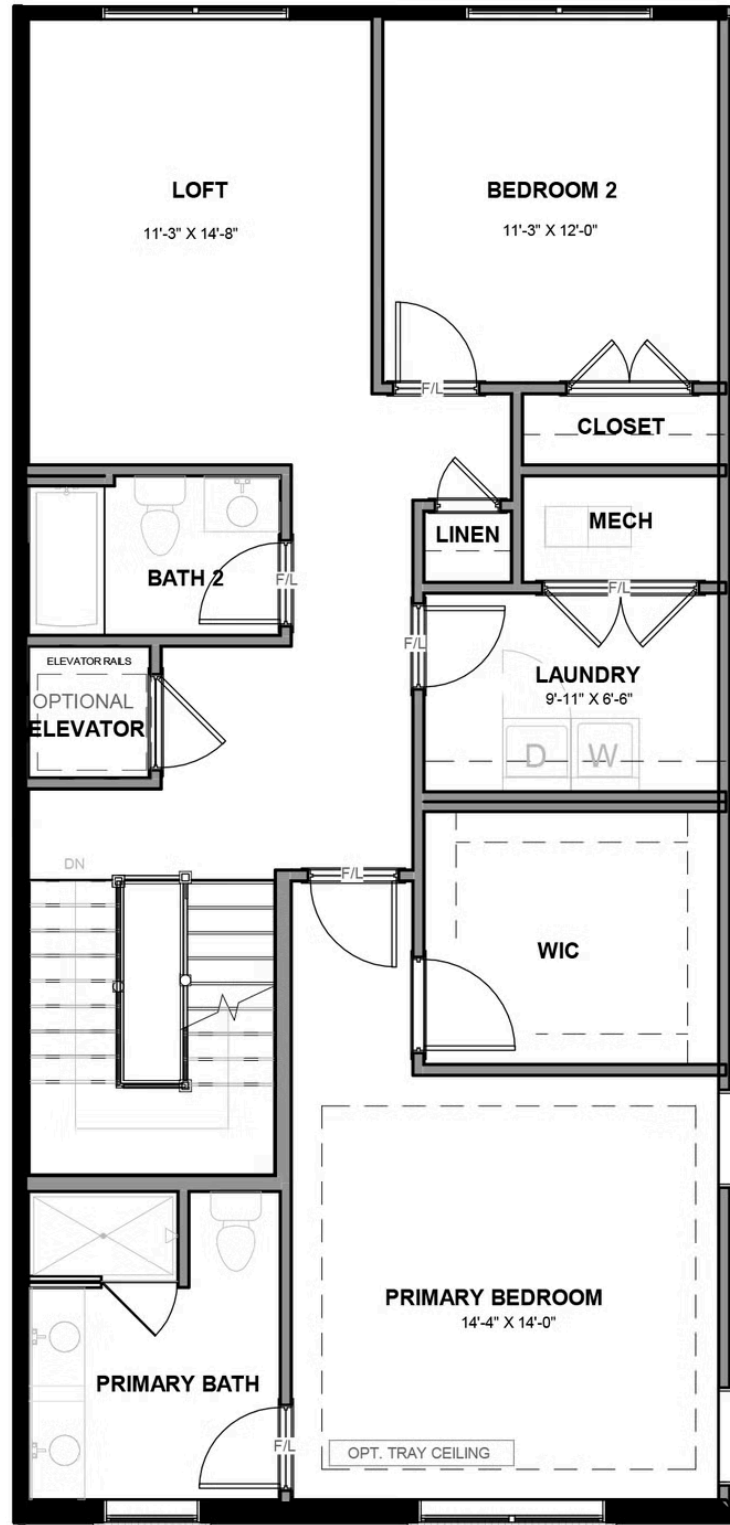


FIRST FLOOR



eagleofva.com

THIRD FLOOR



FOURTH FLOOR

