





402 Midtown Way

AT MIDTOWN



-  4 Bedrooms
-  3.5 Bathrooms
-  3508 Square Feet
-  2 Car Garage

\$1,054,850



The Westmoreland is a 4-story luxury townhome with plenty of opportunity to personalize so that this new home floor plan fits your lifestyle. On the first floor, you will find your rear load 2-car garage, as well as a large rec room and half bath that can be converted to a bedroom or full bath if you prefer. Head up to the second floor where you will find a spacious family room that flows into the Kitchen and the formal Dining Room. There is also a pocket office adjacent to the family room, as well as a spacious deck. The third floor features dual primary suites with and a large laundry room. The fourth floor will quickly become your favorite, featuring a large media room that leads out to your huge covered rooftop terrace, making this space perfect for entertaining or enjoying a relaxing evening. Plus a fireplace to your terrace and you will be able to enjoy all year long! The fourth floor also features an additional bedroom and full bath.

Features of this Home

- Front Covered Terrace with Gas Fireplace
- NanaWall from Media Room to Terrace
- Gas Fireplace in Family Room
- Wet Bar Rough-In In Media Room
- Under Cabinet LED Lighting in Kitchen
- LED Recessed Lighting Package with Dimmer Switch in Family Room, Primary Bedroom, Media Room and Terrace
- HD Video Package in Family Room, Media Room, and Terrace

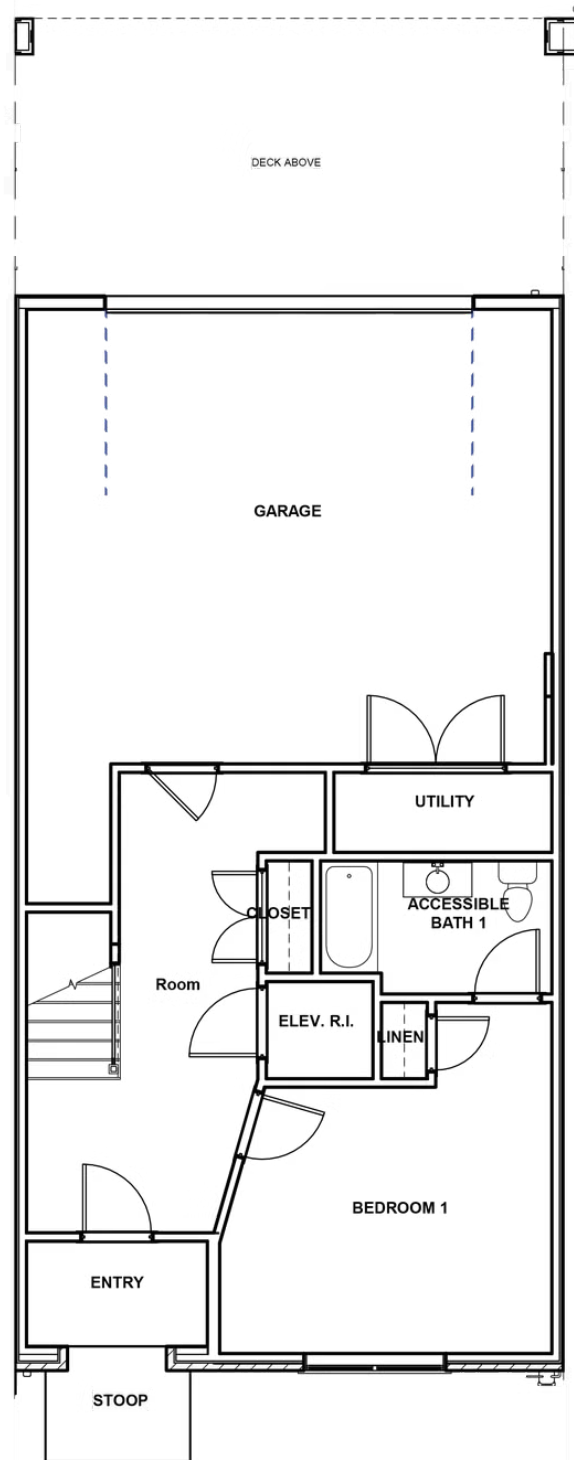
eagleofva.com

402 Midtown Way

AT MIDTOWN



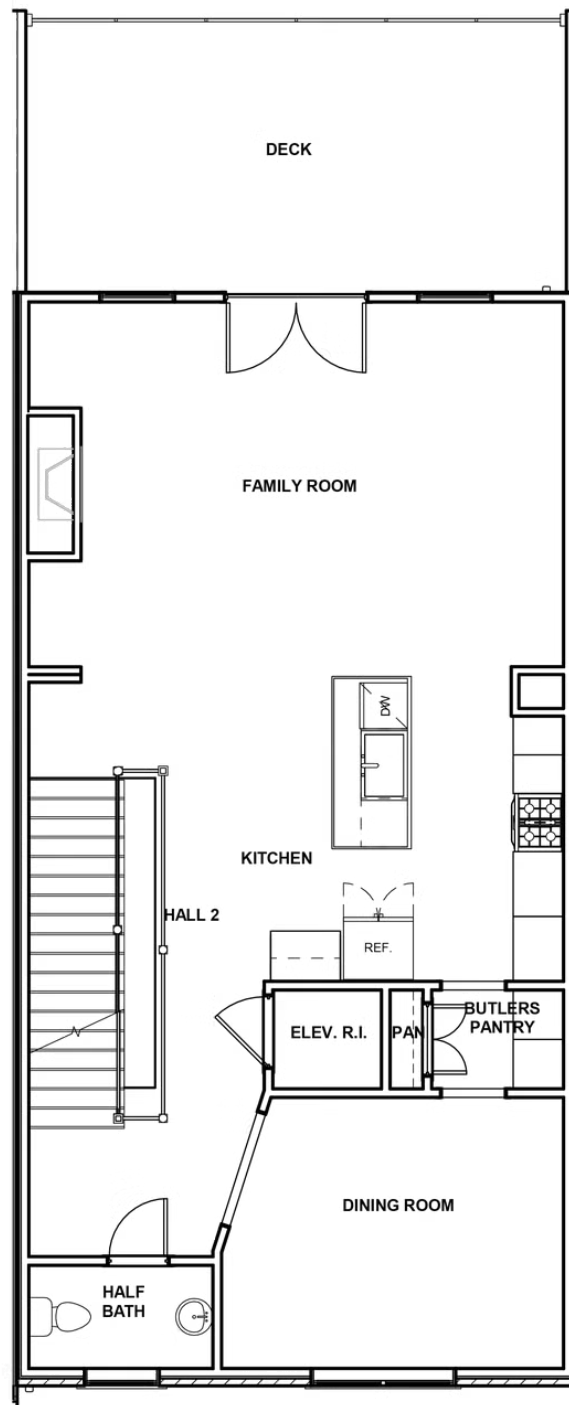
FIRST FLOOR



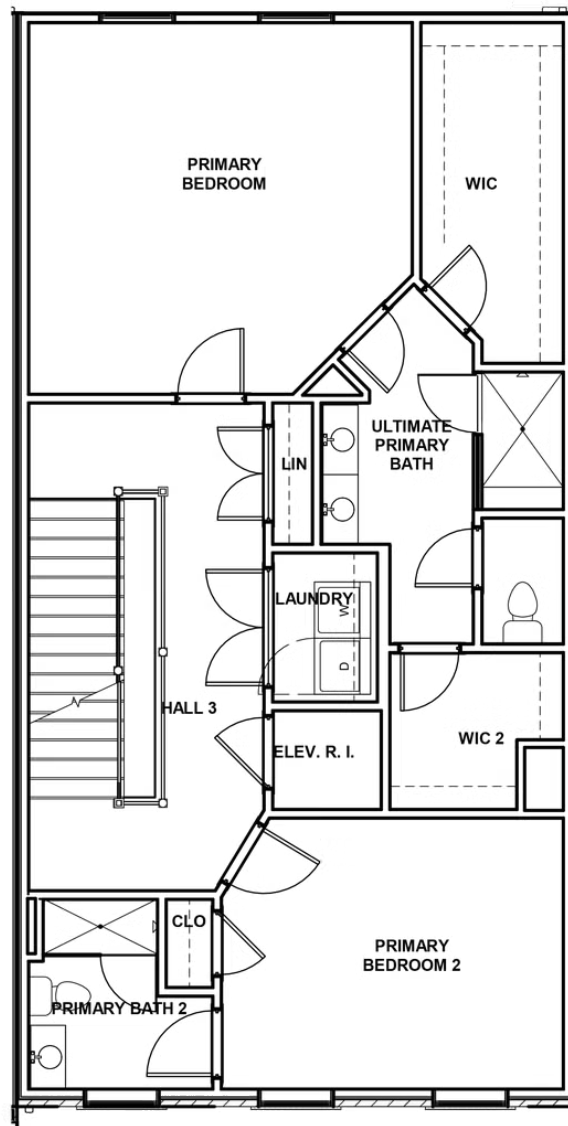
eagleofva.com

This information is deemed reliable but not guaranteed. All details, dimensions, square footage, illustrations and pricing are approximate and may vary from actual plans and specifications. Contact an Eagle Sales Consultant for details. Current information as of 19th August 2025

SECOND FLOOR



THIRD FLOOR



FOURTH FLOOR

