





-  3 Bedrooms
-  3.5 Bathrooms
-  3508 Square Feet
-  2 Car Garage

**\$1,059,990**



The Westmoreland is a 4-story luxury townhome with plenty of opportunity to personalize so that this new home floor plan fits your lifestyle. On the first floor, you will find your rear load 2-car garage, as well as a bedroom and full bath. Head up to the second floor where you will find a spacious family room that flows into the Kitchen, Butler's Pantry, and the formal Dining Room.

The third floor features an Owner's Suite that expands the entire floor! This features a large primary bedroom, luxurious bathroom, and a dreamy walk-in closet. This floor also has a large laundry room. The fourth floor will quickly become your favorite, featuring a large media room with a NanaWall that leads out to your huge covered rooftop terrace, making this space perfect for entertaining or enjoying a relaxing evening. Plus with a fireplace on your terrace, you will be able to enjoy all year long! The fourth floor also features an additional bedroom and full bath.

## Features of this Home

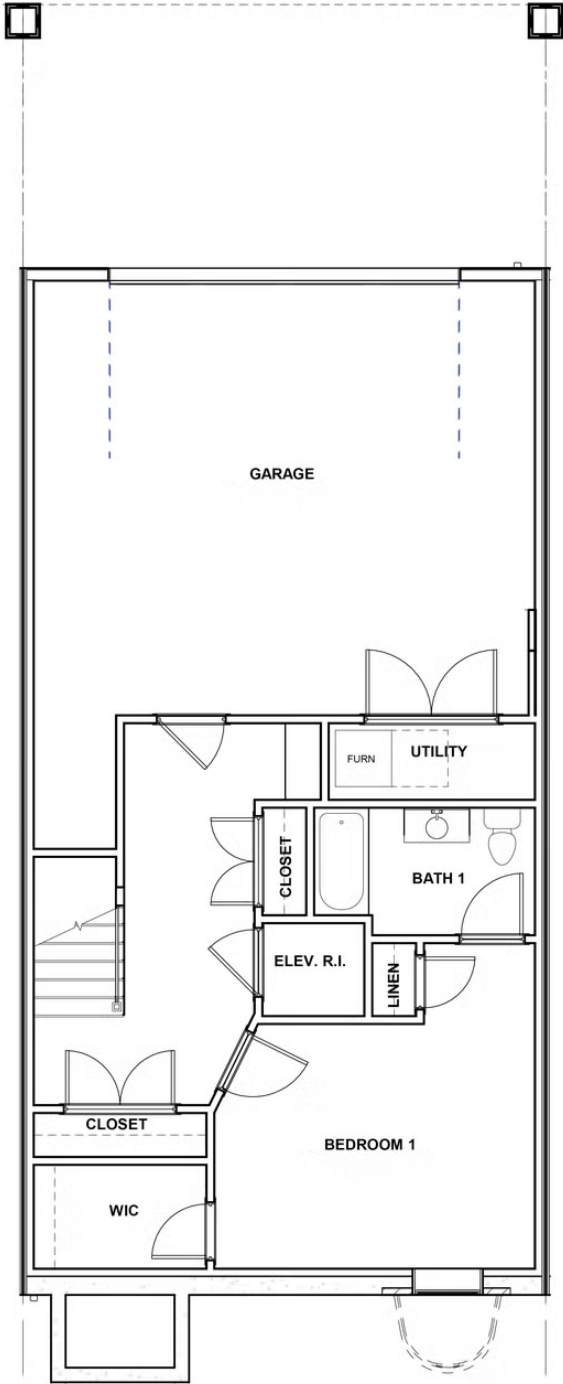
- Entire floor owner's suite with Ultimate primary bath and huge walk-in closet and laundry room
- NanaWall leading out to rear covered terrace with brick fireplace on fourth floor
- Deck on second floor
- Second floor entry luxury townhome

# 343 Eheart St SE

AT MIDTOWN



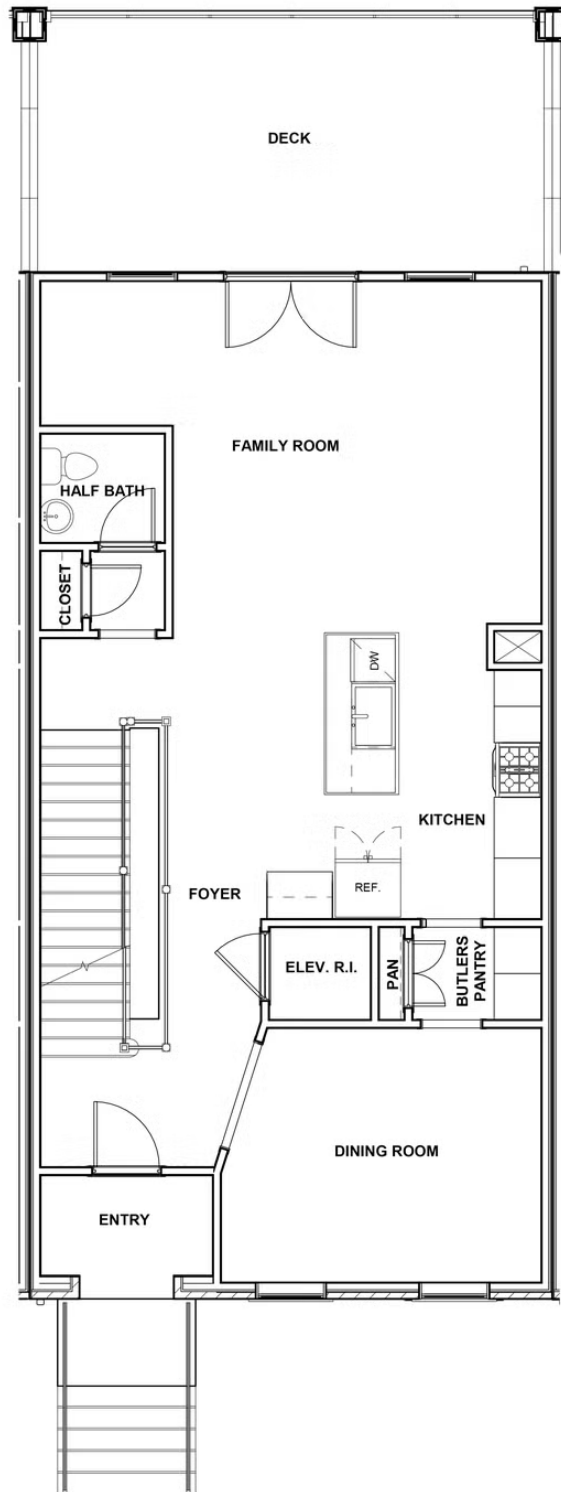
## FIRST FLOOR



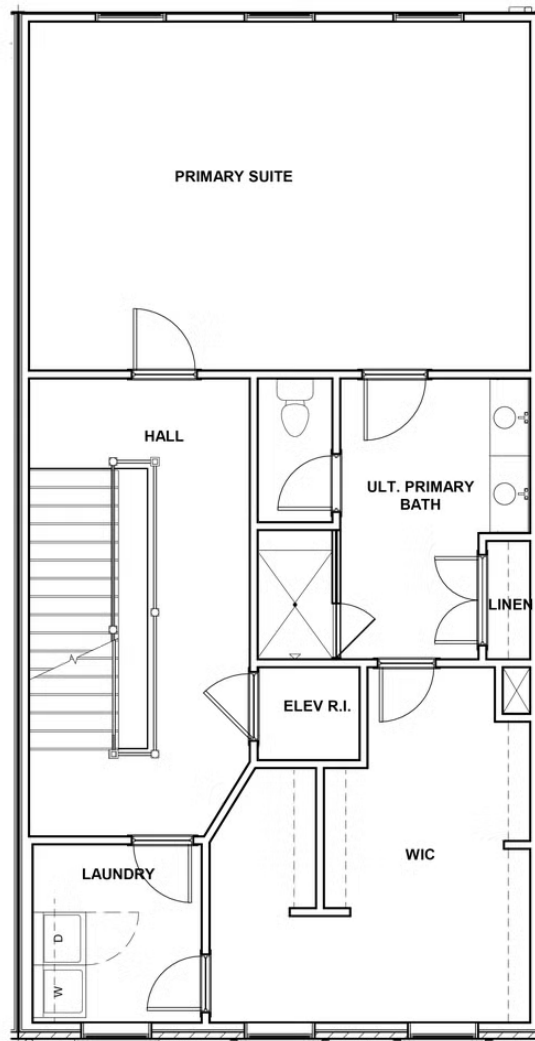
[eagleofva.com](http://eagleofva.com)

This information is deemed reliable but not guaranteed. All details, dimensions, square footage, illustrations and pricing are approximate and may vary from actual plans and specifications. Contact an Eagle Sales Consultant for details. Current information as of 22nd October 2024

## SECOND FLOOR



## THIRD FLOOR



## FOURTH FLOOR

