





2211 Carroll Drive

AT GIVENS FARM



-  4 Bedrooms
-  3.5 Bathrooms
-  2811 Square Feet
-  2 Car Garage

\$835,079



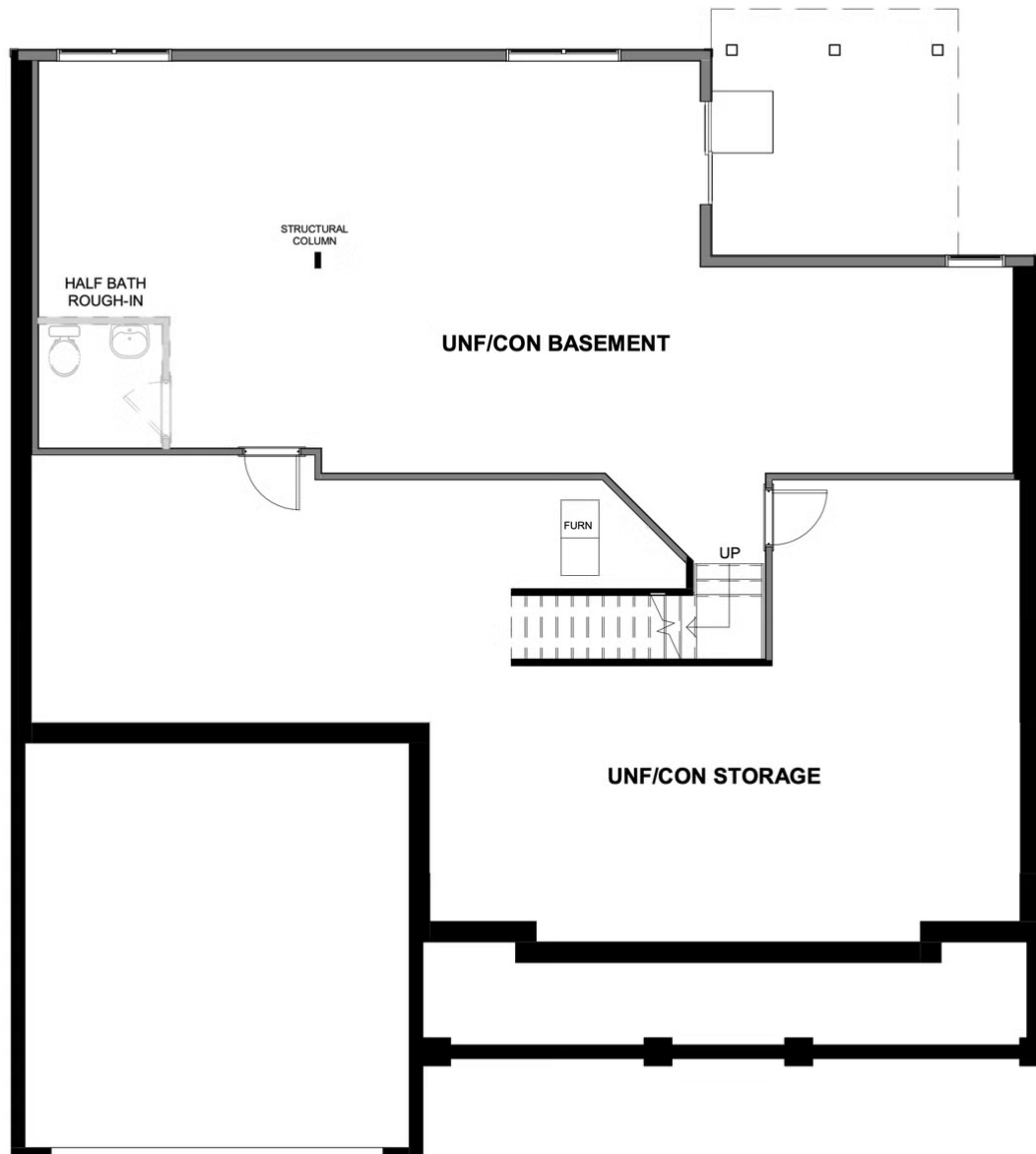
The Westminster is a 2 story single family new home floor plan with 4 bedrooms, 3.5 baths, and over 2,800 square feet of living space to personalize for your lifestyle. Walk in the front door and you'll find a foyer flanked by a formal Dining Room and Study. Enter your spacious Family Room and discover that it flows right into the Kitchen with a large island, perfect for cooking and entertaining. Tucked away you'll find your first floor primary bedroom suite which features a huge walk-in closet and a spacious primary bathroom. The second floor of the home features 3 additional bedrooms with walk-in closets, plus two full baths.

Features of this Home

- First Floor Primary Bedroom with Serenity Bath and freestanding tub
- Ensuite in Bedroom 4
- Unfinished Basement with half bath rough-in and expansive conditioned storage area
- Study with french doors
- Gas fireplace
- Craftsman Wainscoting in Dining Room
- High Definition Video Package in Family Room

eagleofva.com

BASEMENT

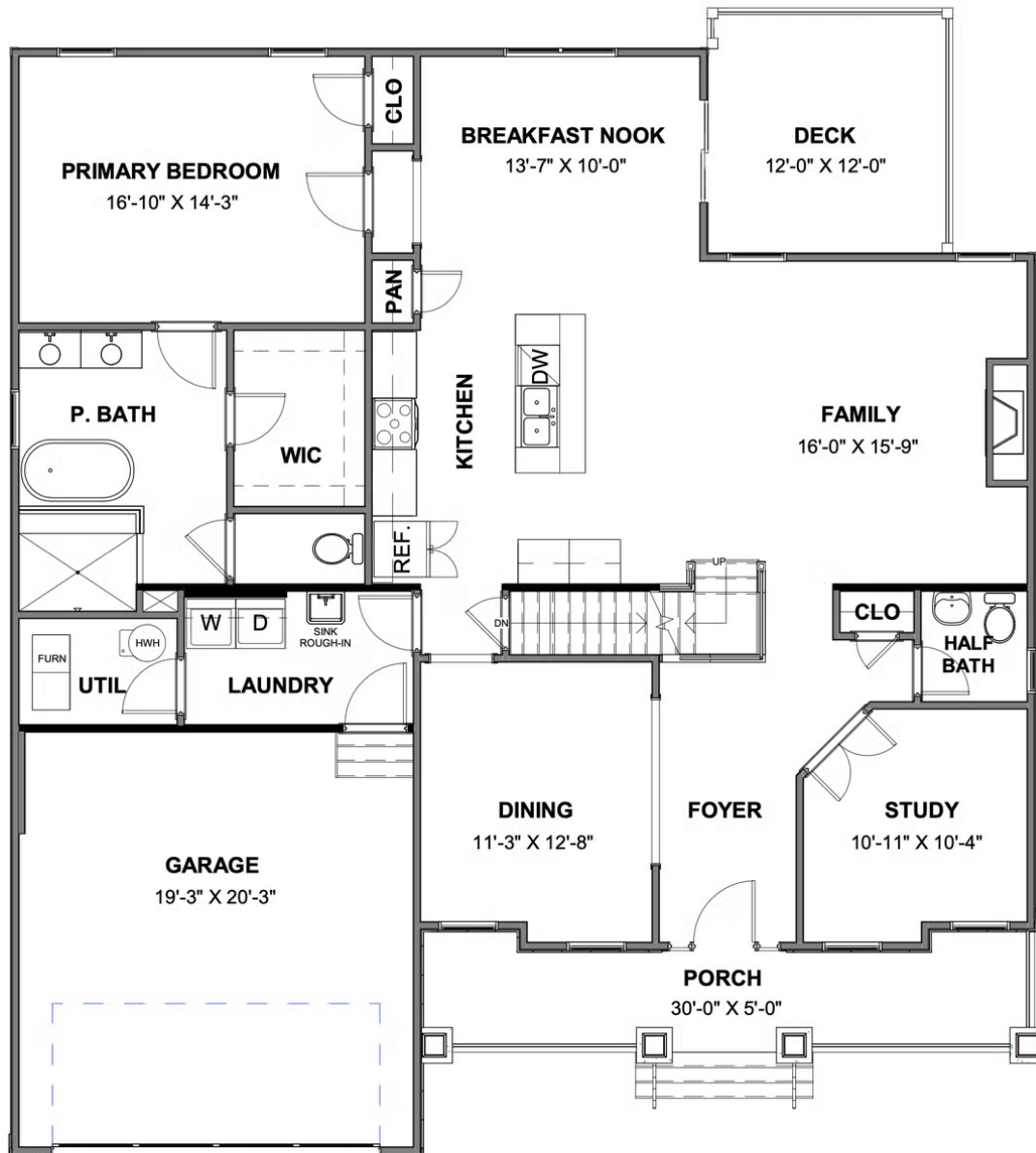


2211 Carroll Drive

AT GIVENS FARM



FIRST FLOOR



eagleofva.com

This information is deemed reliable but not guaranteed. All details, dimensions, square footage, illustrations and pricing are approximate and may vary from actual plans and specifications. Contact an Eagle Sales Consultant for details. Current information as of 15th May 2024

SECOND FLOOR

