





212 Claire Drive

AT GIVENS FARM



-  4 Bedrooms
-  3.5 Bathrooms
-  3445 Square Feet
-  2 Car Garage

\$724,960



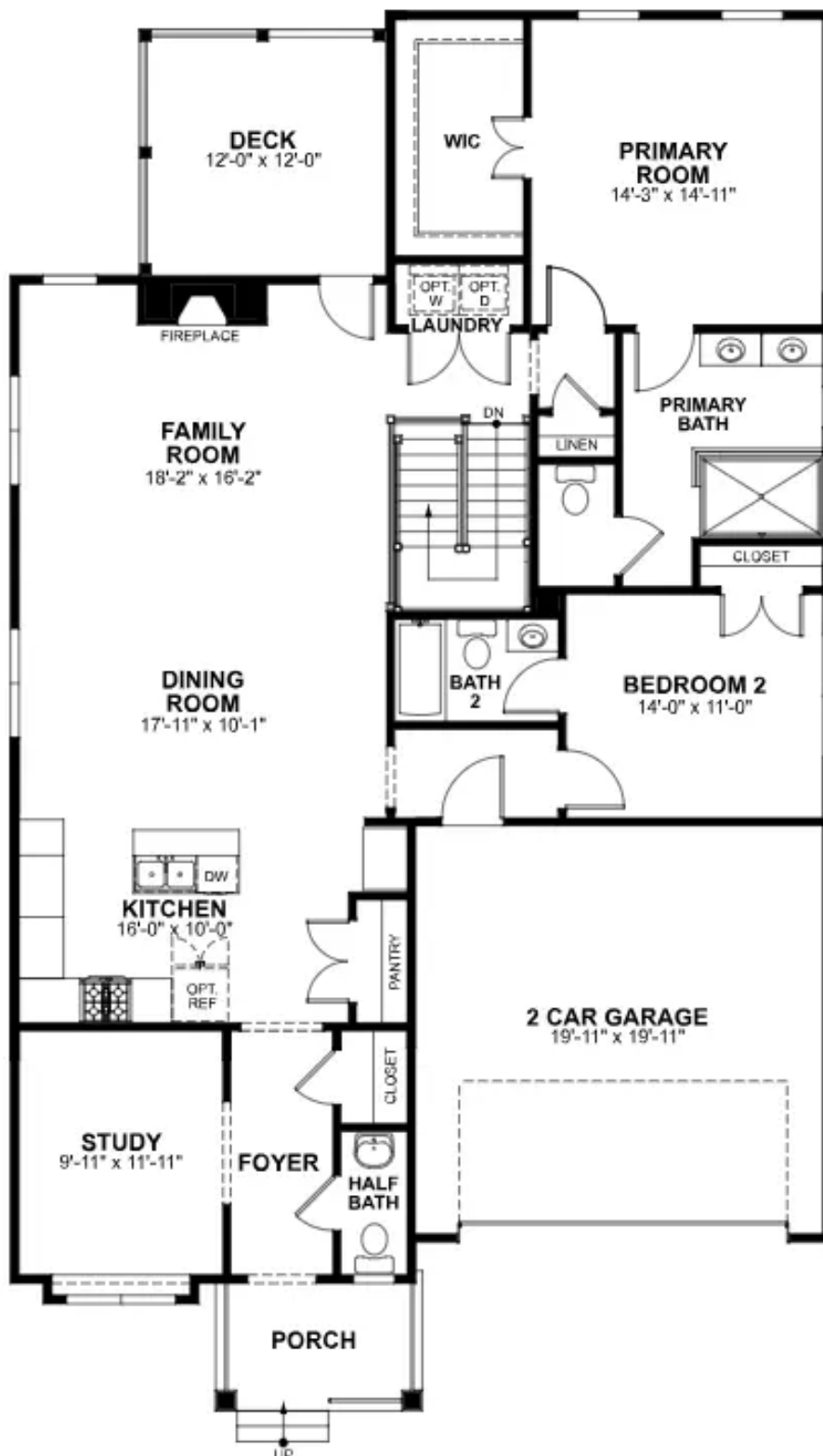
The Belmont Terrace is a 2 story new home floor plan with 4 bedrooms, 3.5 bathrooms, and a 2-car garage. This unique plan allows you to enter on the main floor which features an open-flowing dining room and living room perfect for entertaining. This large space flows directly into the Kitchen with the option to add an island. The primary bedroom suite is also on this level with a luxurious walk-in closet and spacious primary bathroom. There is also a second Bedroom that can be converted into a Den. You'll head down the stairs to the terrace level where there are huge unfinished storage spaces. These spaces can be converted into a bedroom, a media room, or a large recreation room.

Features of this Home

- Serenity primary bath
- Finished basement level with two bedrooms, full bath, and expanded rec room
- Fireplace in family room with black granite surround
- Additional large windows added to family room
- Gas plumbing to kitchen and deck

eagleofva.com

MAIN LEVEL



TERRACE LEVEL

