






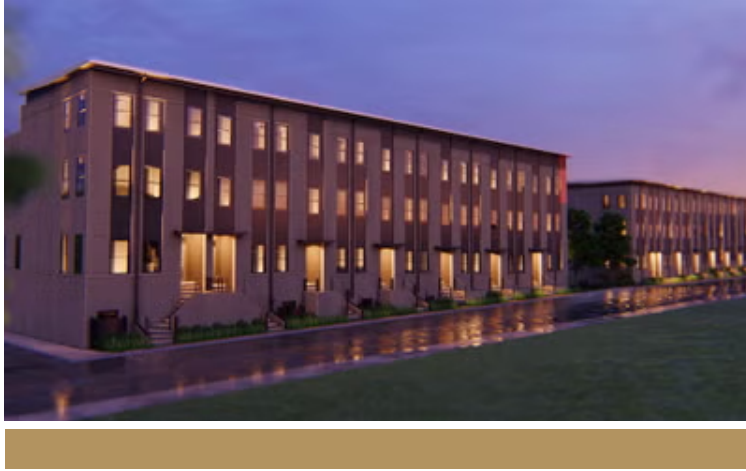
-  3 Bedrooms
-  4.5 Bathrooms
-  3,100 Square Feet
-  2 Car Garage
-  4 Levels



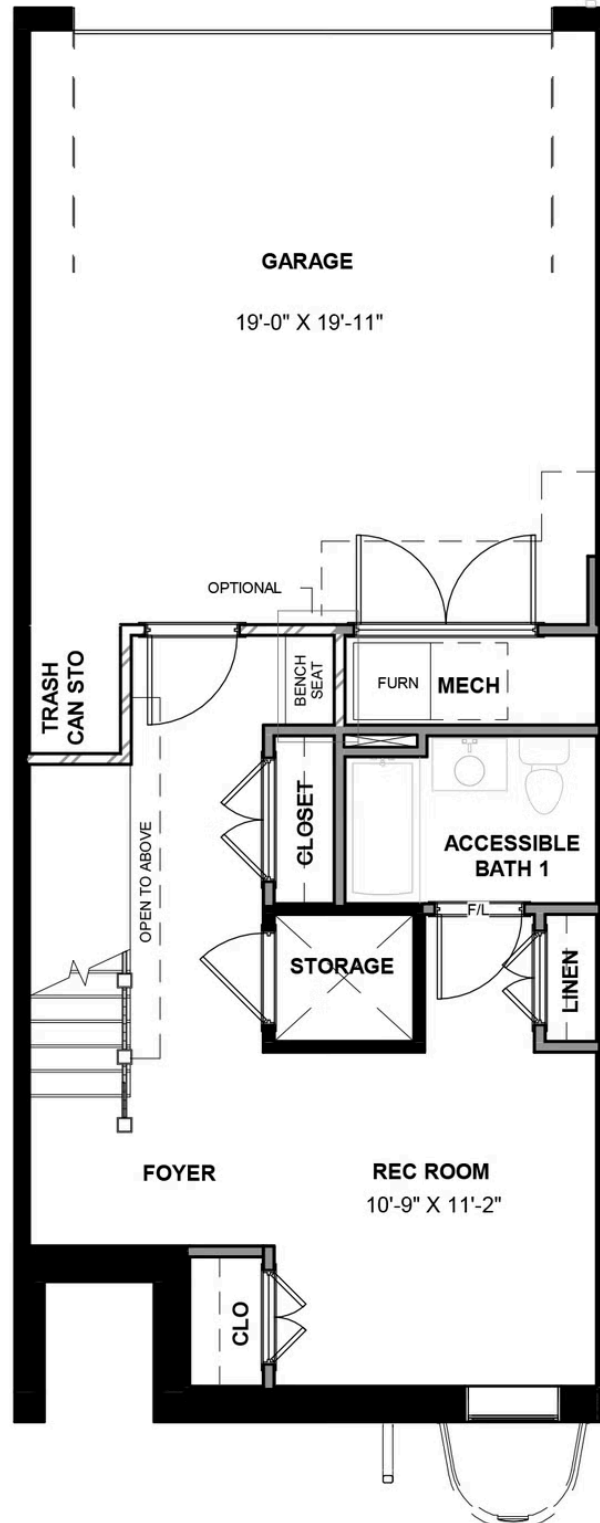
The Southaven is a 4-story second floor entry townhome with plenty of opportunity to personalize this new home floor plan to fit your lifestyle. On the first floor you will find your 2-car rear load garage, as well a rec room and full bath. The rec room can be turned into a den or a bedroom if you prefer. Head on up to the second floor where you will find the main entry door to your home, along with your kitchen that has a large island opening right to the spacious Family Room. A dining room completes the floor. The third floor has dual primary bedroom suites and your laundry room for added convenience. Choose from different primary bath layouts or make the third floor a complete owner's suite with huge walk-in closet! The fourth floor will have an additional bedroom and full bath, as well as a spacious media room that leads out to a large outdoor terrace. Enjoy beautiful views of the city and river from your terrace while sipping on your morning coffee or enjoying some evening appetizers and the sunset. You can add an elevator if you desire for even more convenience, otherwise enjoy the additional storage space.

## Features of this Floorplan

- 4-story luxury townhome
- Rear load 2-car garage
- Rec room and full bath on first floor
- Dual Primary bedrooms
- Terrace with option for NanaWall
- Opportunity for entire primary bedroom suite on third floor with huge bathroom and walk-in closet



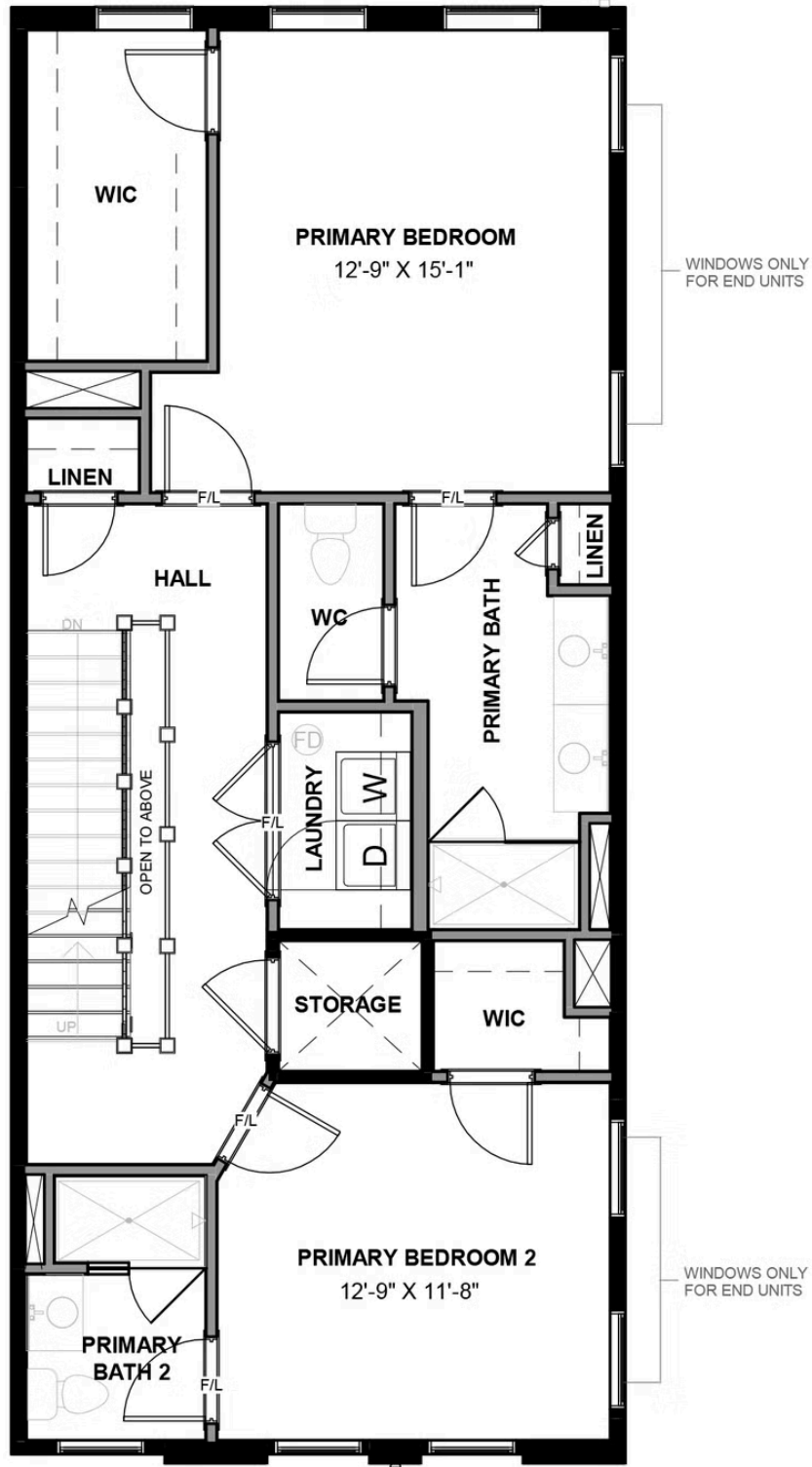
## FIRST FLOOR



## SECOND FLOOR



## THIRD FLOOR



## FOURTH FLOOR

