



-  3 Bedrooms
-  2.5 Bathrooms
-  1,578 Square Feet
-  2 Levels



Introducing the Pritchard, one of Eagle's newest floor plans that is built to match your lifestyle.

The main living area is spacious and cozy, with a kitchen overlooking the family room and breakfast nook. Add an island in the kitchen to give you even more countertop space and sets the stage for entertaining. The primary bedroom is tucked away at the rear of the home with walk-in closet and primary bath with dual vanities. And our favorite part of the home? A

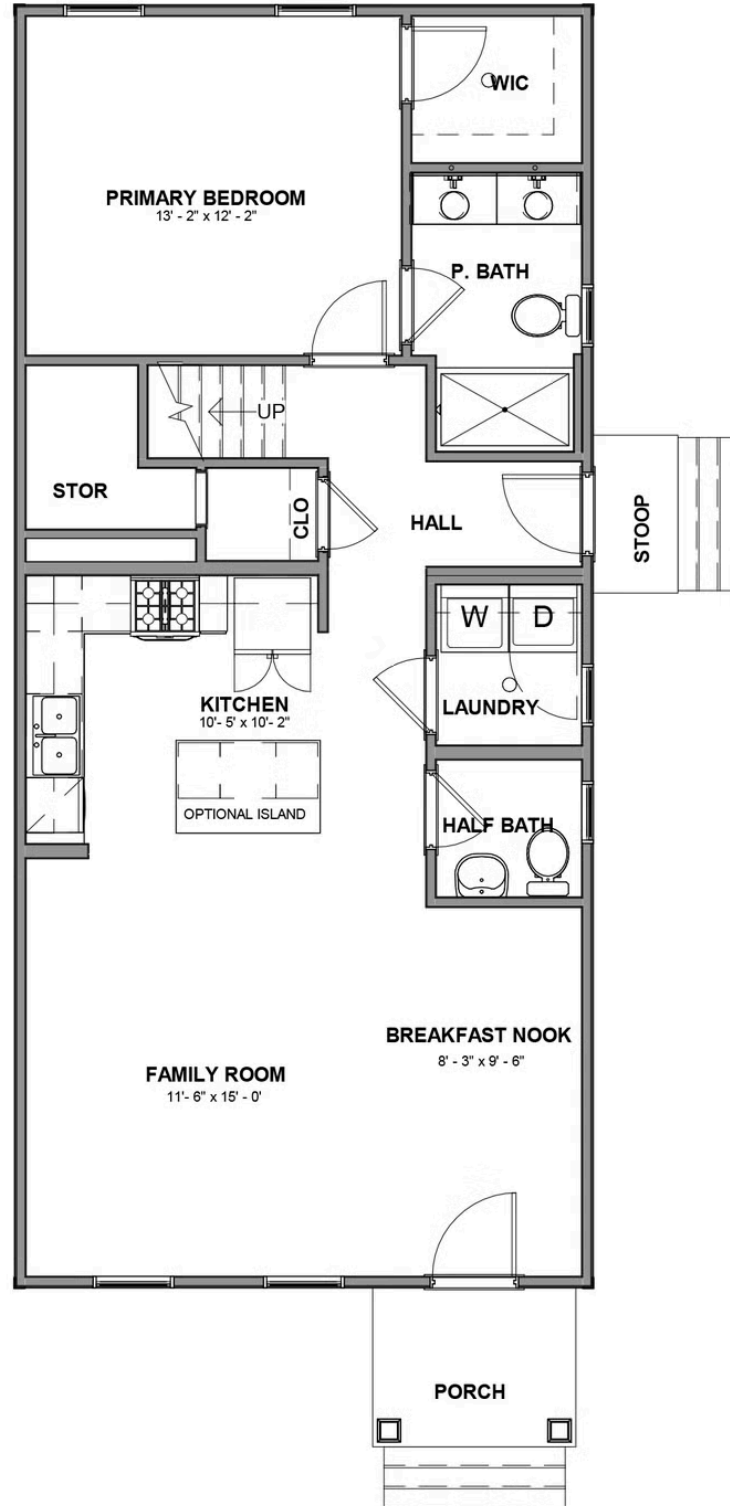
closet and storage area under the stairs that just keeps going - you'll have to explore it for yourself! A half bath and laundry room complete the first floor. Head up to the second floor which has two generously sized bedrooms, a full bath, and the option to add an additional storage area.

## Features of this Floorplan

- First floor primary bedroom featuring walk-in closet and primary bath with dual vanities
- Closet with extra under stair storage
- Second floor with 2 bedrooms, full bath
- Option for additional storage
- Opportunity for full front porch



## FIRST FLOOR



SECOND FLOOR

