






-  4 - 5 Bedrooms
-  3.5 - 4 Bathrooms
-  3,492 Square Feet
-  3 Car Garage
-  2 Levels



Welcome home to the Pembroke! This spacious floor plan has all the space you need, and plenty of opportunities to personalize it to match your lifestyle. Enjoy a grand entrance into your two-story foyer. You'll find a study tucked to one side, perfect for your at home office, home gym, library, or any other space you can imagine. On the other side is your formal dining room which connects to a Butler's Pantry with spacious walk-in pantry. The Kitchen features ample cabinet space and a huge island overlooking the breakfast nook and family room. You're mud room is tucked away off of the kitchen with access to your 3-car garage. Head on to the second floor where you will find the primary bedroom you've been dreaming of with a huge attached primary bath with dual vanities, two walk-in closets, and multiple layouts to choose from. Three additional bedrooms (one with its own private bath), a full bath, and laundry room complete the floor. There's a large unfinished/conditioned storage area above the garage that can be converted into a rec room for even more space to relax in and make your own.

## Features of this Floorplan

- Two-story foyer
- Study
- Walk-in pantry
- 3-car side load garage
- Second floor primary bedroom with spacious primary bath
- Additional bedroom on second floor with its own private bath
- Multiple layouts and ways to personalize

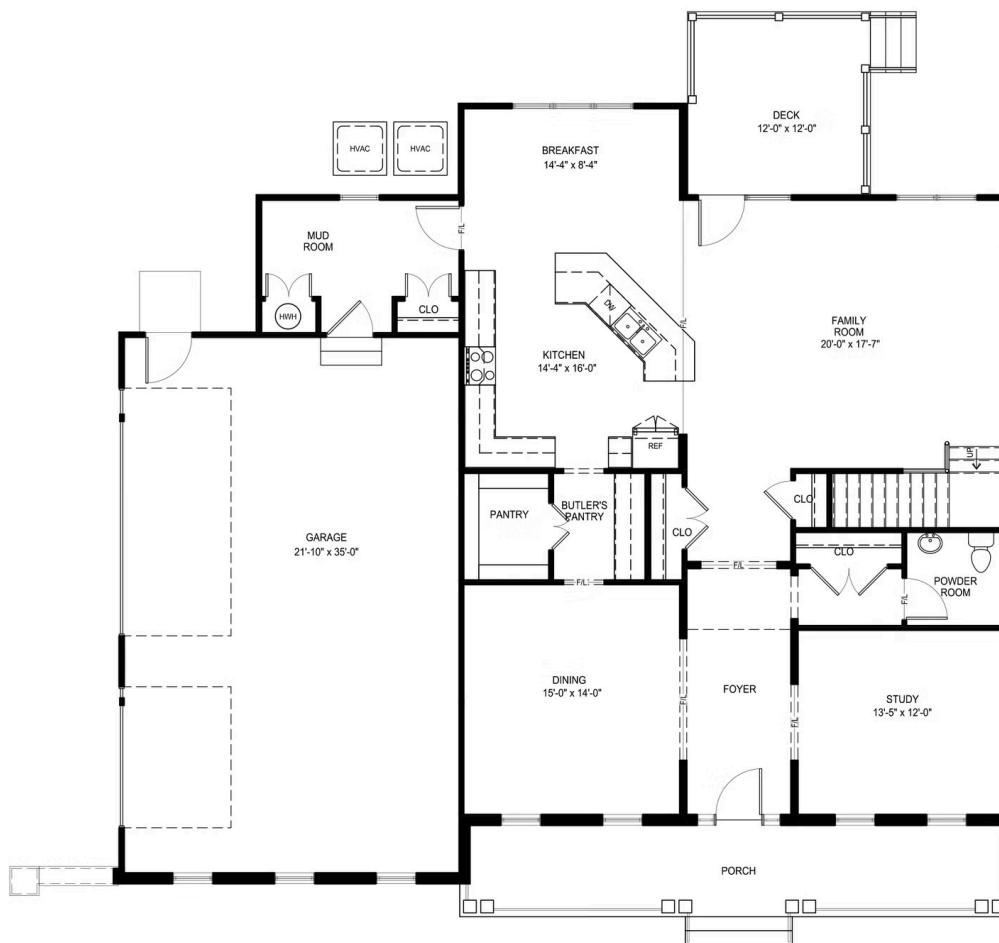
# THE Pembroke



[eagleofva.com](http://eagleofva.com)

This information is deemed reliable but not guaranteed. All details, dimensions, square footage, illustrations and pricing are approximate and may vary from actual plans and specifications. Contact an Eagle Sales Consultant for details. Current information as of 24th May 2026

## FIRST FLOOR



## SECOND FLOOR

