






# THE Manchester Townhome eagle

-  3 - 4 Bedrooms
-  2.5 - 3 Bathrooms
-  2,140 Square Feet
-  2 Car Garage
-  2 Levels



As timeless as it is contemporary, the Manchester Townhome is a 2-story plan with 3 bedrooms, 2.5 baths, and over 2,100 square feet of head-turning curb appeal. Step inside the foyer and be swept away by free-flowing spaciousness that whisks you effortlessly from family room to breakfast nook and on into a beautiful kitchen ready for cooking up memories. The first floor primary suite with expansive bath and walk-in closet leaves nothing to spare. Upstairs offers a loft area, two additional bedrooms, a full bath, and ample opportunities to personalize.

## Features of this Floorplan

- 2-story townhome
- Rear load 2-car garage
- First floor primary suite
- Spacious loft on second floor
- Option for balcony
- Multiple ways to personalize layout on first and second floor

[eagleofva.com](http://eagleofva.com)

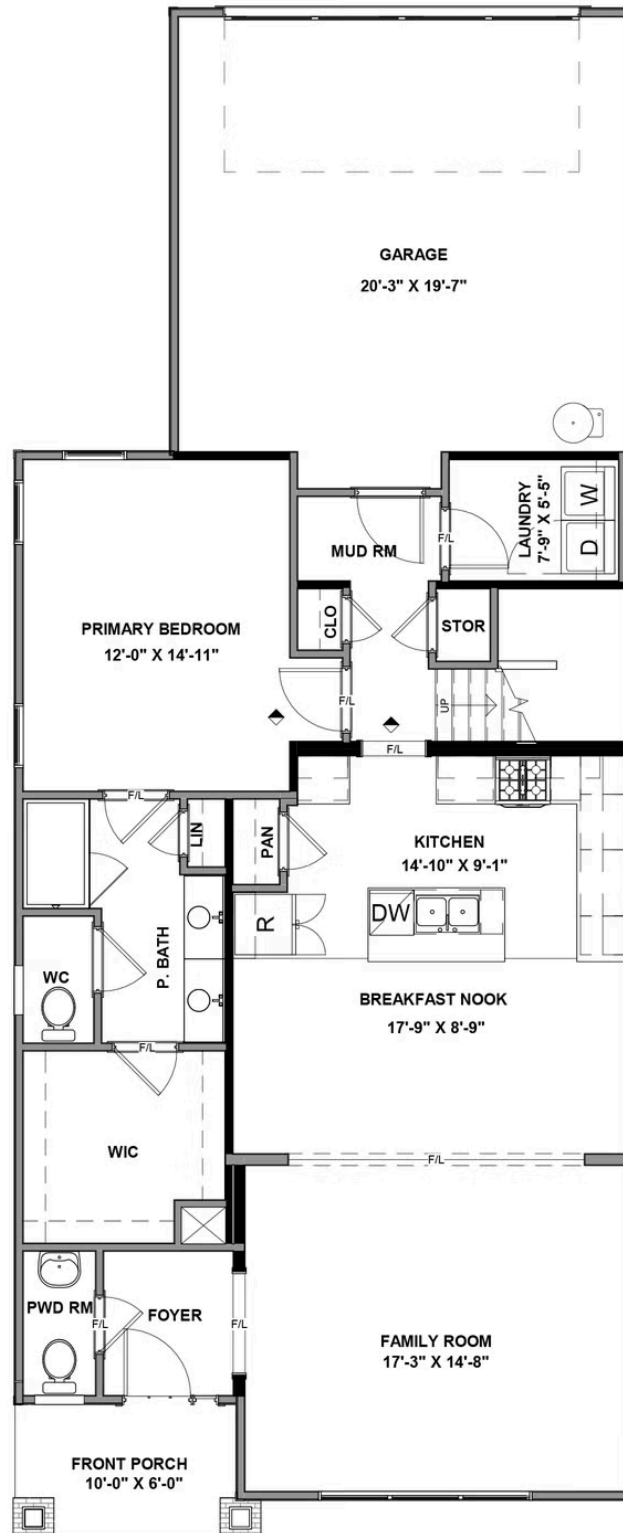
# THE Manchester Townhome eagle



[eagleofva.com](http://eagleofva.com)

This information is deemed reliable but not guaranteed. All details, dimensions, square footage, illustrations and pricing are approximate and may vary from actual plans and specifications. Contact an Eagle Sales Consultant for details. Current information as of 22nd December 2025

## FIRST FLOOR



## SECOND FLOOR

